

AP43639
CONTROL BOX

CN1<BROWN>
PIN

- 1 BLK<W1400> LEFT FRONT EXTEND
- 2 BLK<W1500> LEFT FRONT RETRACT
- 3 BLK<W2400> RIGHT FRONT EXTEND
- 4 BLK<W2500> RIGHT FRONT RETRACT
- 5 BLK<W4400> LEFT REAR EXTEND
- 6 BLK<W4500> LEFT REAR RETRACT
- 7 BLK<W3400> RIGHT REAR EXTEND
- 8 BLK<W3500> RIGHT REAR RETRACT
- 9 BLK<W8500> MASTER RELAY CONTROL
- 10 BLK<W8600> PUMP RELAY CONTROL
- 11 N/C
- 12 N/C

4 PIN GRAY
PIN

- 1 BLK<W6800> SW. BATTERY
- 2 BLK<W6800> SW. BATTERY
- 3 WHT<W6230> GROUND
- 4 WHT<W6230> GROUND

8 PIN BLACK <LEFT SIDE>
PIN

- 1 N/C
- 2 N/C
- 3 N/C
- 4 N/C
- 5 N/C
- 6 N/C
- 7 BLACK 120 Ω RESISTOR
- 8 BLACK 120 Ω RESISTOR

AP42640 CN3<BLACK>
PIN

- 1 BLK<W1000> LEFT FRONT WARN. SW.
- 2 BLK<W1200> LEFT FRONT PRESS. SW.
- 3 BLK<W2000> RIGHT FRONT WARN. SW.
- 4 BLK<W2200> RIGHT FRONT PRESS. SW.
- 5 BLK<W8100> SYSTEM PRESS. SW.
- 6 WHT<W6235> GROUND
- 7 N/C
- 8 N/C
- 9 BLK<W4000> LEFT REAR WARN. SW.
- 10 BLK<W4200> LEFT REAR PRESS. SW.
- 11 BLK<W3000> RIGHT REAR WARN. SW.
- 12 BLK<W3200> RIGHT REAR PRESS. SW.

AP42640 CN2<BROWN>
PIN

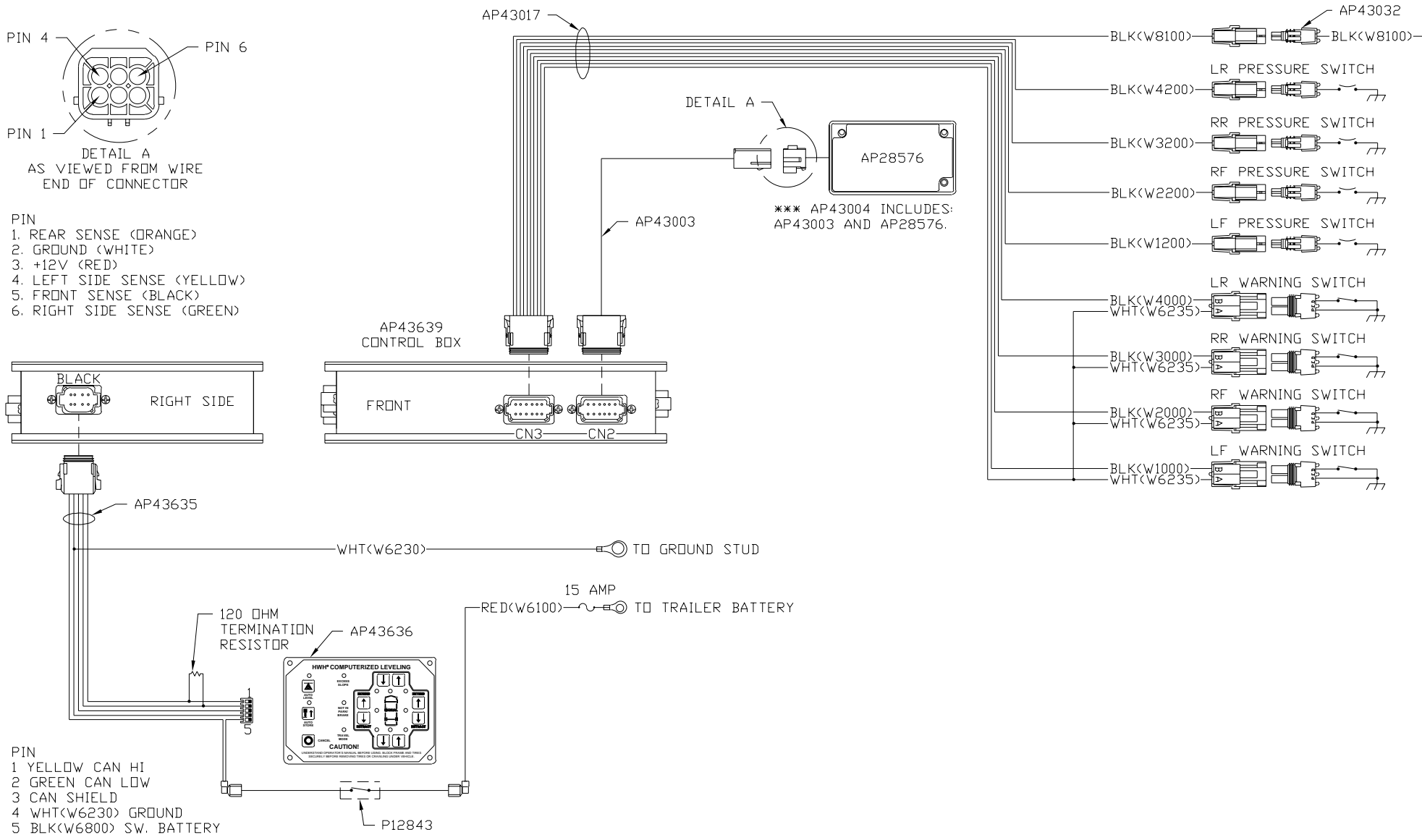
- 1 N/C <KEY PIN>
- 2 N/C
- 3 N/C
- 4 N/C
- 5 N/C
- 6 <WHITE> GROUND
- 7 <RED> +12V
- 8 N/C
- 9 <YELLOW> LEFT SIDE SENSE
- 10 <BLACK> FRONT SENSE
- 11 <GREEN> RIGHT SIDE SENSE
- 12 <ORANGE> REAR SENSE

8 PIN BLACK <RIGHT SIDE>
PIN

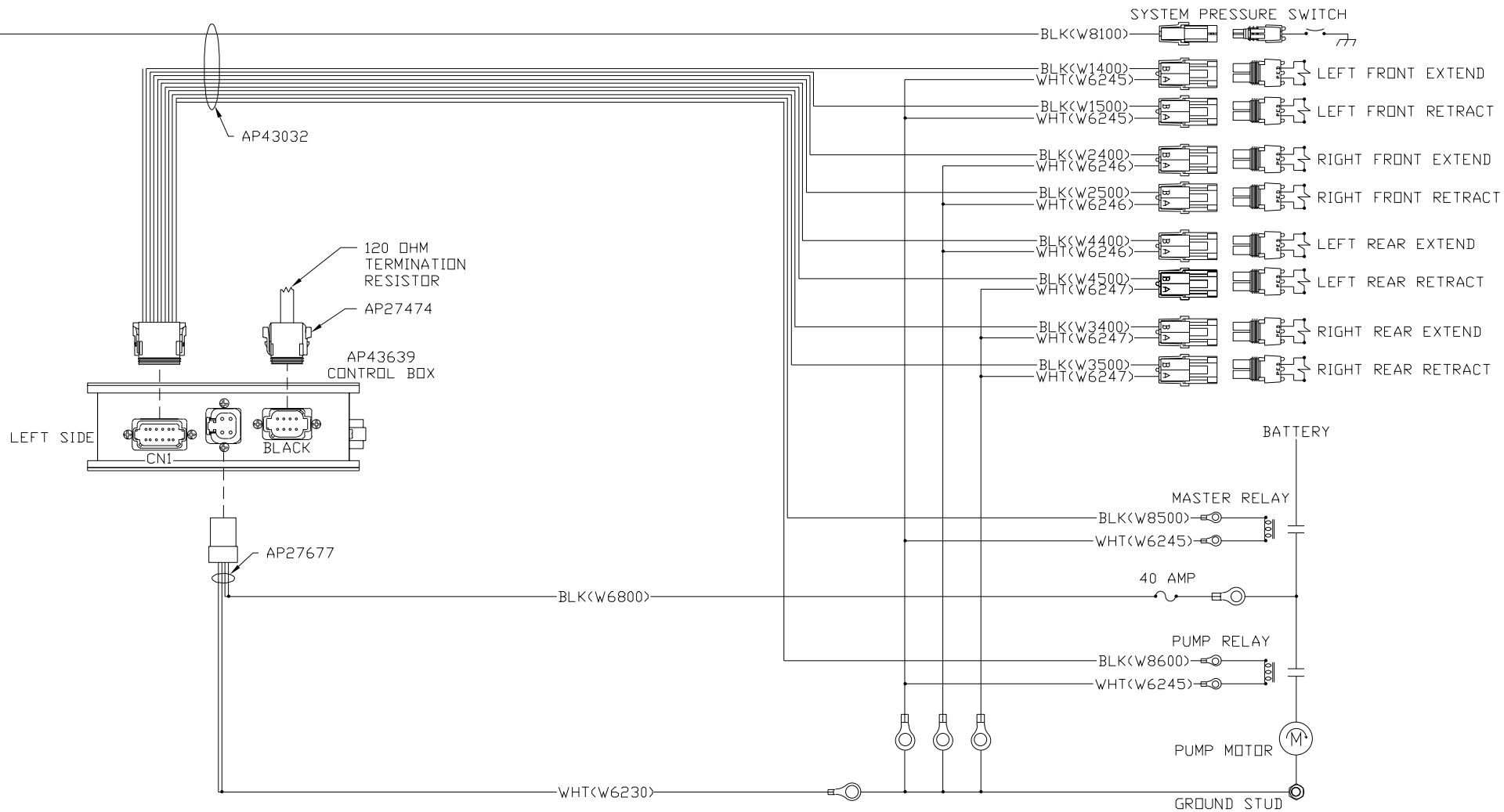
- 1 N/C
- 2 N/C
- 3 BLK<W6800> SWITCHED BATT.
- 4 WHT<W6230> GROUND
- 5 CAN SHIELD
- 6 N/C
- 7 <GREEN> CAN LOW
- 8 <YELLOW> CAN HI

NOTE: INSTALLATION MUST CONFORM TO GOOD SHOP PRACTICES, SAE STANDARDS, RVIA STANDARDS, AND OTHER APPLICABLE STANDARDS.

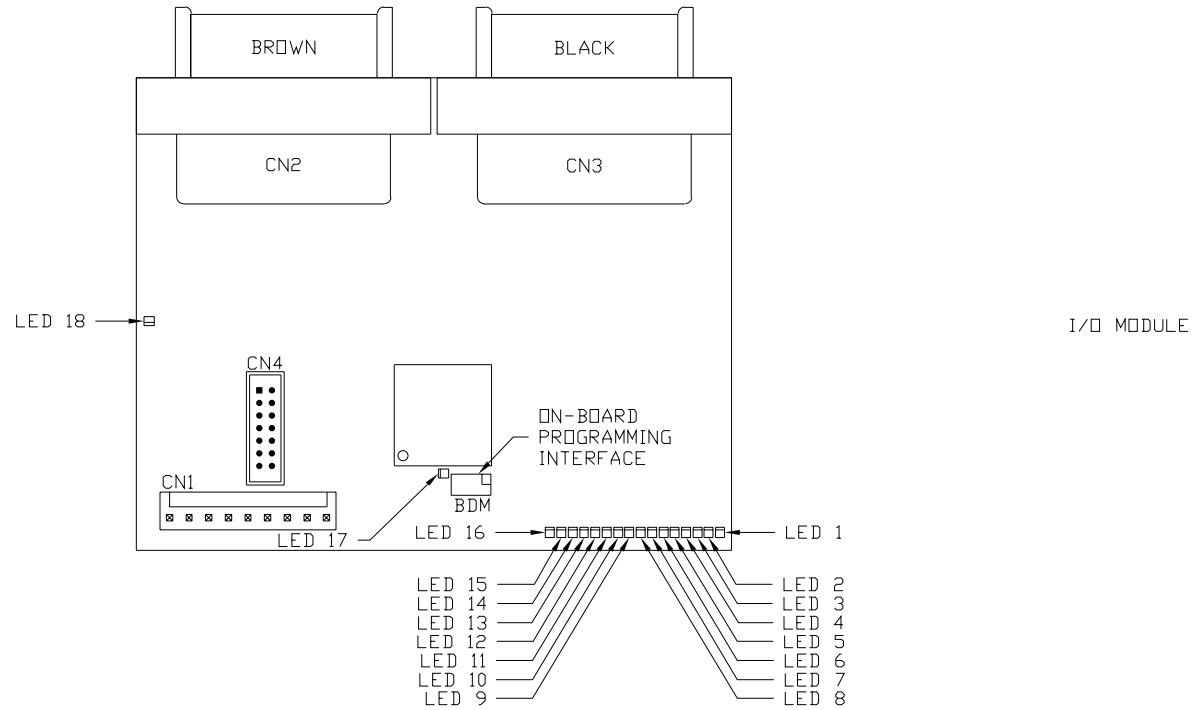
| | | | | | |
|--|---------|-------------------|--------------|--|--|
| | | HWH | | I-80 EXIT 267 SOUTH RT 1 MOSCOW, IOWA 52760 | |
| | | SCALE 1:3 | DATE 28OCT08 | DRAWN BY . | |
| 1 | 09FEB10 | ADDED SENSE LED'S | | | |
| NO. | DATE | REVISION | | | |
| SYSTEM SCHEMATIC ELEC | | | | DRAWING NUMBER MP90232 A/E | |
| THE INFORMATION DISCLOSED ON THIS DRAWING IS CONFIDENTIAL AND MUST NOT BE DISCLOSED OR USED IN ANY MANNER WHICH WILL BE DETRIMENTAL TO THE HWH CORPORATION | | | | | |



NOTE: INSTALLATION MUST CONFORM TO GOOD SHOP PRACTICES, SAE STANDARDS, RVIA STANDARDS, AND OTHER APPLICABLE STANDARDS.



NOTE: INSTALLATION MUST CONFORM TO GOOD SHOP PRACTICES, SAE STANDARDS, RVIA STANDARDS, AND OTHER APPLICABLE STANDARDS.

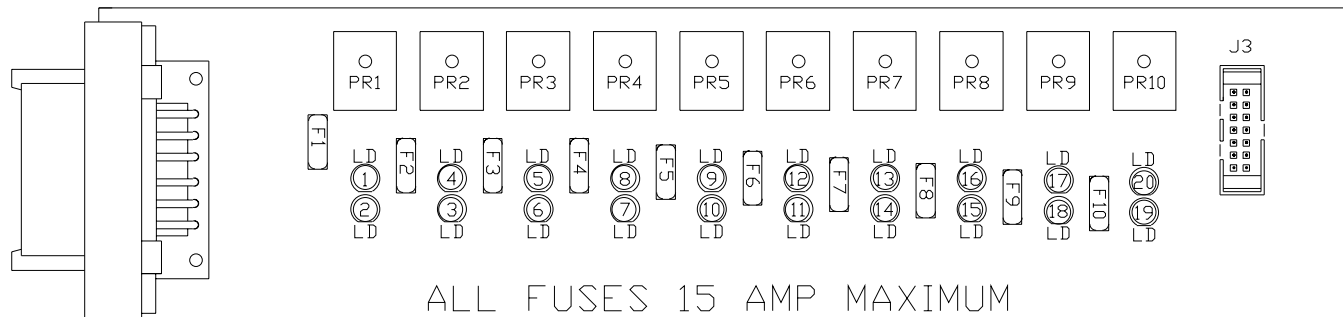


| LED # | CONNECTOR | COLOR | DESCRIPTION |
|-------|-----------|--------|------------------------|
| LED 1 | CN3 PIN 1 | RED | LEFT FRONT WARN. SW. |
| LED 2 | CN3 PIN 2 | GREEN | LEFT FRONT PRESS. SW. |
| LED 3 | CN3 PIN 3 | YELLOW | RIGHT FRONT WARN. SW. |
| LED 4 | CN3 PIN 4 | RED | RIGHT FRONT PRESS. SW. |
| LED 5 | CN3 PIN 5 | GREEN | SYSTEM PRESS. SW. |
| LED 6 | NOT USED | YELLOW | NOT USED |
| LED 7 | NOT USED | RED | NOT USED |
| LED 8 | NOT USED | GREEN | NOT USED |
| LED 9 | CN3 PIN 9 | YELLOW | LEFT REAR WARN. SW. |

| LED # | CONNECTOR | COLOR | DESCRIPTION |
|--------|----------------|--------|-----------------------|
| LED 10 | CN3 PIN 10 | RED | LEFT REAR PRESS. SW. |
| LED 11 | CN3 PIN 11 | GREEN | RIGHT REAR WARN. SW. |
| LED 12 | CN3 PIN 12 | YELLOW | RIGHT REAR PRESS. SW. |
| LED 13 | CN2 PIN 9 | RED | LEFT SIDE SENSE |
| LED 14 | CN2 PIN 10 | GREEN | FRONT SENSE |
| LED 15 | CN2 PIN 11 | YELLOW | RIGHT SIDE SENSE |
| LED 16 | CN2 PIN 12 | RED | REAR SENSE |
| LED 17 | NOT APPLICABLE | RED | LINK LIGHT |
| LED 18 | NOT APPLICABLE | RED | POWER TO CAN MODULES |

NOTE: INSTALLATION MUST CONFORM TO GOOD SHOP PRACTICES, SAE STANDARDS, RVIA STANDARDS, AND OTHER APPLICABLE STANDARDS.

MP90232 D
09FEB10



OUTPUTS
LED LAYOUT

| LED # | COLOR | FUSE # | OUTPUT | RELAY # | DESCRIPTION |
|-------|--------|---------|--------|---------|--------------------------------|
| LED1 | YELLOW | --- | --- | PR1 | LEFT FRONT EXTEND <COIL> |
| LED2 | RED | FUSE 1 | PIN 1 | PR1 | LEFT FRONT EXTEND <CONTACT> |
| LED3 | RED | FUSE 2 | PIN 2 | PR2 | LEFT FRONT RETRACT <CONTACT> |
| LED4 | YELLOW | --- | --- | PR2 | LEFT FRONT RETRACT <COIL> |
| LED5 | YELLOW | --- | --- | PR3 | RIGHT FRONT EXTEND <COIL> |
| LED6 | RED | FUSE 3 | PIN 3 | PR3 | RIGHT FRONT EXTEND <CONTACT> |
| LED7 | RED | FUSE 4 | PIN 4 | PR4 | RIGHT FRONT RETRACT <CONTACT> |
| LED8 | YELLOW | --- | --- | PR4 | RIGHT FRONT RETRACT <COIL> |
| LED9 | YELLOW | --- | --- | PR5 | LEFT REAR EXTEND <COIL> |
| LED10 | RED | FUSE 5 | PIN 5 | PR5 | LEFT REAR EXTEND <CONTACT> |
| LED11 | RED | FUSE 6 | PIN 6 | PR6 | LEFT REAR RETRACT <CONTACT> |
| LED12 | YELLOW | --- | --- | PR6 | LEFT REAR RETRACT <COIL> |
| LED13 | YELLOW | --- | --- | PR7 | RIGHT REAR EXTEND <COIL> |
| LED14 | RED | FUSE 7 | PIN 7 | PR7 | RIGHT REAR EXTEND <CONTACT> |
| LED15 | RED | FUSE 8 | PIN 8 | PR8 | RIGHT REAR RETRACT <CONTACT> |
| LED16 | YELLOW | --- | --- | PR8 | RIGHT REAR RETRACT <COIL> |
| LED17 | YELLOW | --- | --- | PR9 | MASTER RELAY CONTROL <COIL> |
| LED18 | RED | FUSE 9 | PIN 9 | PR9 | MASTER RELAY CONTACT <CONTACT> |
| LED19 | RED | FUSE 10 | PIN 10 | PR10 | PUMP RELAY CONTACT <CONTACT> |
| LED20 | YELLOW | --- | --- | PR10 | PUMP RELAY CONTROL <COIL> |

NOTE: INSTALLATION MUST CONFORM TO GOOD SHOP PRACTICES, SAE STANDARDS, RVIA STANDARDS, AND OTHER APPLICABLE STANDARDS.