

- CONNECTOR #51
- 1) FR SENSE
 - 2) LS SENSE
 - 3) REAR SENSE
 - 4) RS SENSE
 - 5) GND

- CONNECTOR 33
- 1) BLK(W6125)
 - 2) BLK(W6825)
 - 3) BLK(W7530)
 - 4) NC
 - 5) BLK(W7610)
 - 6) BLK(W7503)
 - 7) NC
 - 8) BLK(W7501)
 - 9) BLK(W7502)

NEUTRAL HOLD NOTE:
 CUT WIRE 161B INTO TWO PARTS FROM
 CONNECTOR CV, PIN 11. CONNECT ONE
 END OF WIRE 161B TO HWH WIRE (W9955).
 CONNECT THE OTHER END OF WIRE 161B
 TO HWH WIRE (W9961).

NO.	DATE	REVISION

HWH 1-80 EXIT 267 SOUTH
 RT 1 MOSCOW, IOWA 52760
 SCALE 1:3 DATE 16DEC99 DRAWN BY .

SCHMATIC SYSTEM

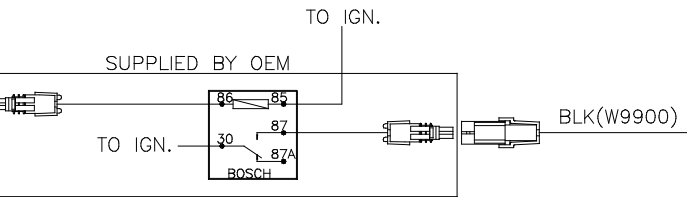
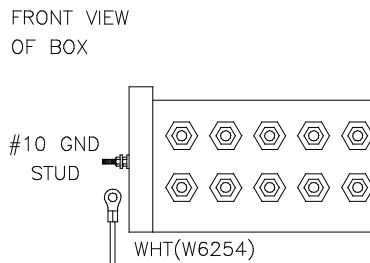
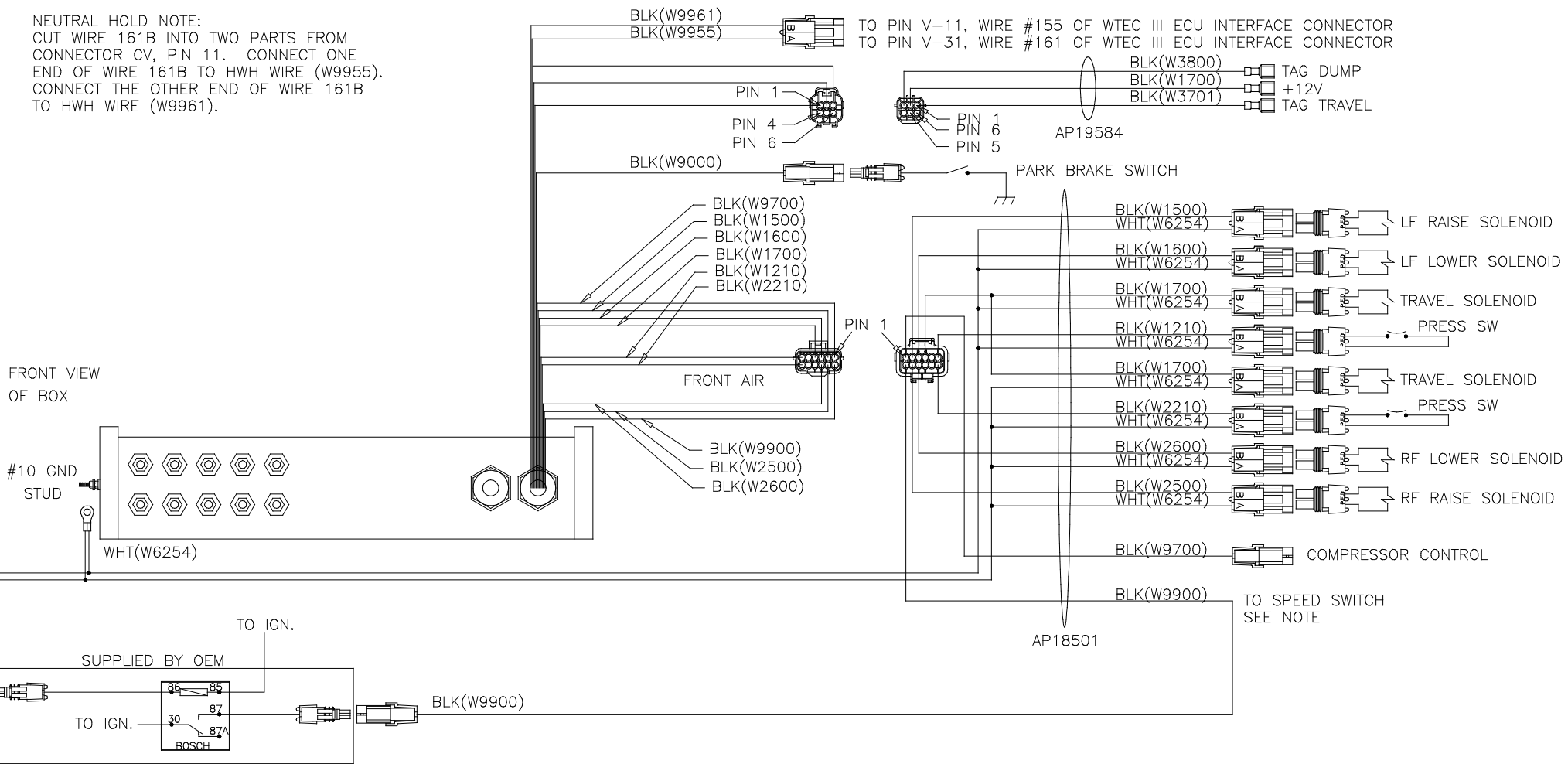
THE INFORMATION DISCLOSED ON THIS DRAWING IS CONFIDENTIAL AND MUST NOT BE DISCLOSED OR USED IN ANY MANNER WHICH WILL BE DETRIMENTAL TO THE HWH CORPORATION

ELECTRICAL DRAWING NUMBER MP88571 A/E

MP88.571A
 16DEC99

SPEED SWITCH NOTE:
 HWH WIRE (W9900) MUST BE CONNECTED
 TO PREVOST WIRE 5NC FROM C475, POS. 5.
 (REAR JUNCTION BOX)

NEUTRAL HOLD NOTE:
 CUT WIRE 161B INTO TWO PARTS FROM
 CONNECTOR CV, PIN 11. CONNECT ONE
 END OF WIRE 161B TO HWH WIRE (W9955).
 CONNECT THE OTHER END OF WIRE 161B
 TO HWH WIRE (W9961).



MP88571B
 16DEC99

MP88571 B/E
 16DEC99

