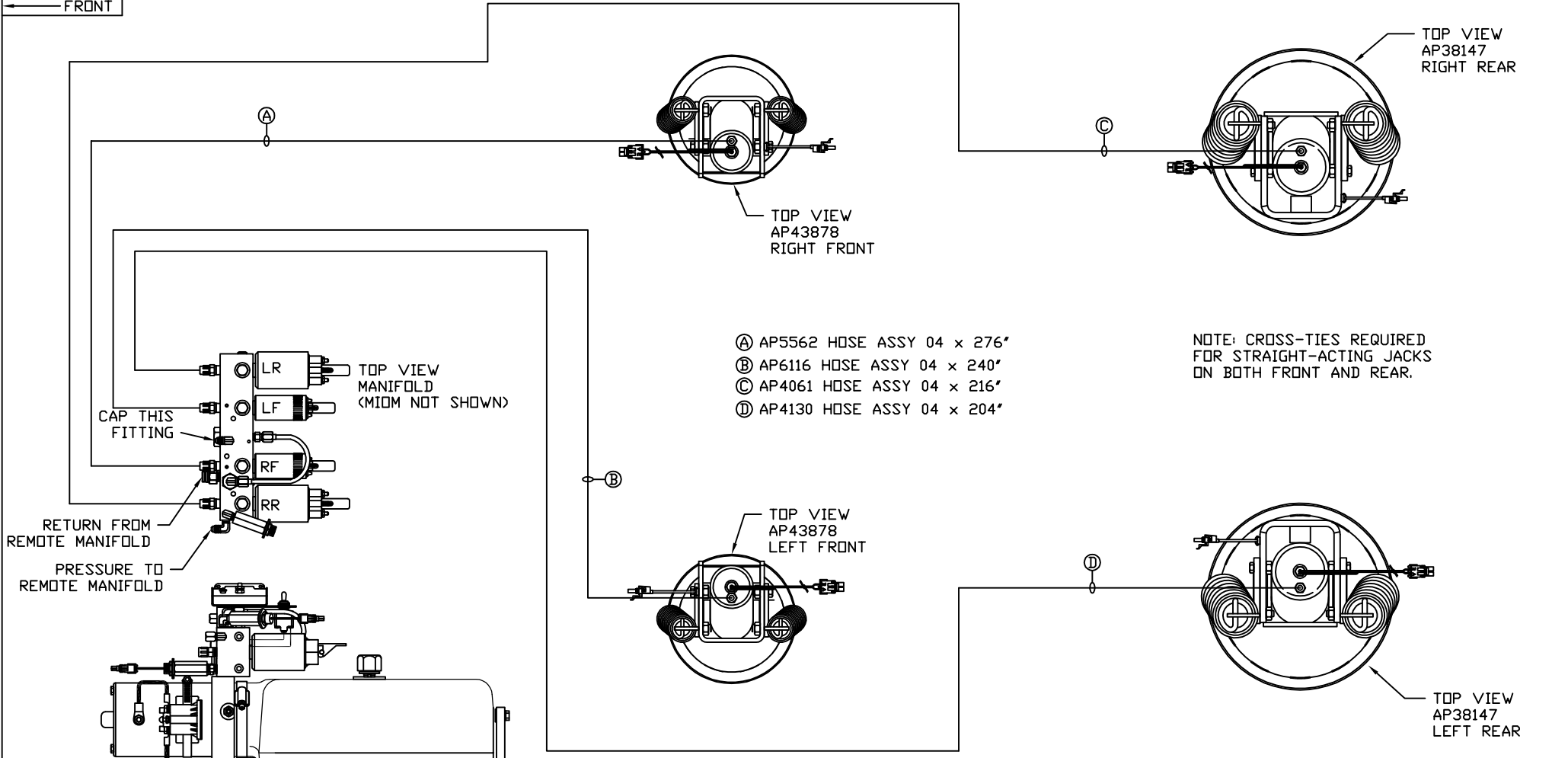
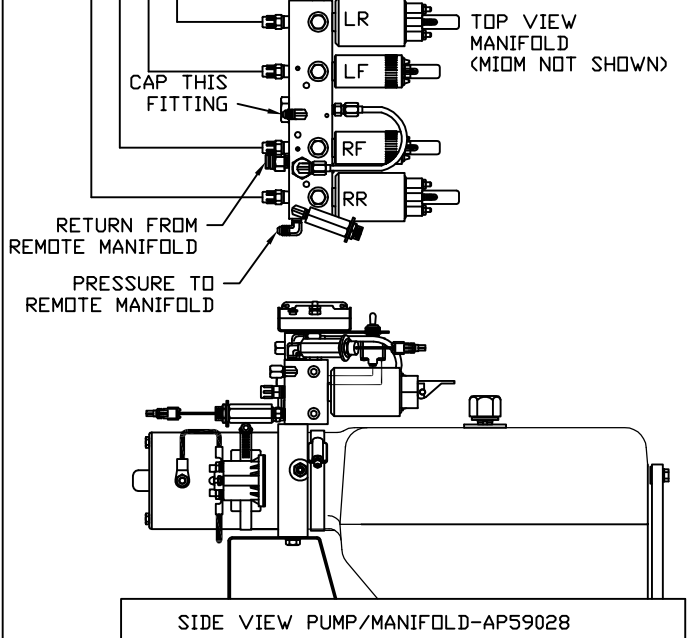


ORIENTATION
← FRONT



- Ⓐ AP5562 HOSE ASSY 04 x 276"
- Ⓑ AP6116 HOSE ASSY 04 x 240"
- Ⓒ AP4061 HOSE ASSY 04 x 216"
- Ⓓ AP4130 HOSE ASSY 04 x 204"

NOTE: CROSS-TIES REQUIRED FOR STRAIGHT-ACTING JACKS ON BOTH FRONT AND REAR.



SIDE VIEW PUMP/MANIFOLD-AP59028

LOCATION AND ORIENTATION OF PUMP/MANIFOLD ASSEMBLY WILL DIFFER DEPENDING UPON O.E.M.

NOTE: INSTALLATION MUST CONFORM TO GOOD SHOP PRACTICES, SAE STANDARDS, RVIA STANDARDS, AND OTHER APPLICABLE STANDARDS.

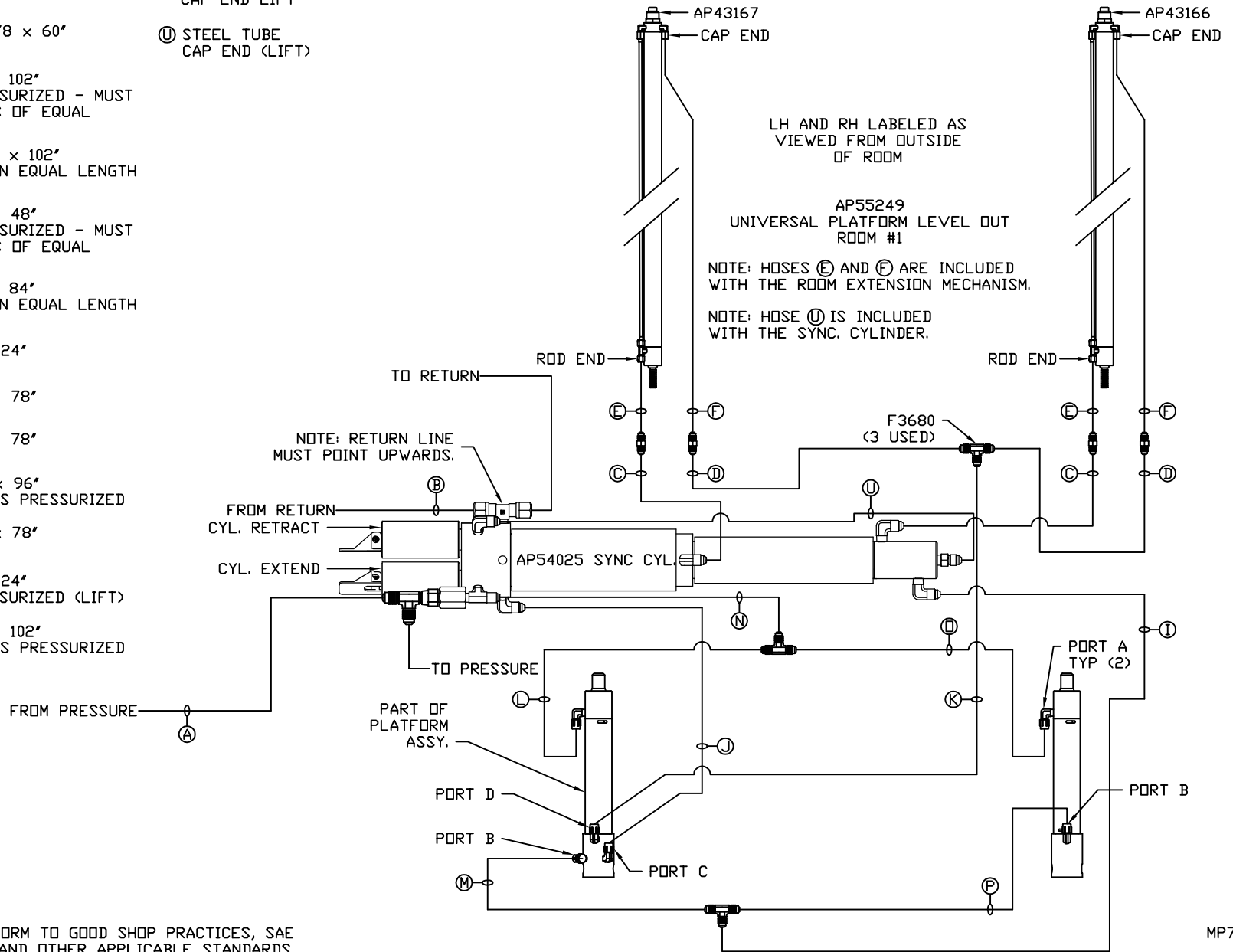
LEVELING SYSTEM: AP60782

		HWH I-80 EXIT 267 SOUTH RT 1 MOSCOW, IOWA 52760	
		SCALE 1:6	DATE 04DEC19
		DRAWN BY .	
HYD CONN DIAGRAM			
NO.	DATE	REVISION	
THE INFORMATION DISCLOSED ON THIS DRAWING IS CONFIDENTIAL AND MUST NOT BE DISCLOSED OR USED IN ANY MANNER WHICH WILL BE DETRIMENTAL TO THE HWH CORPORATION			
ROLLINGSTAR			DRAWING NUMBER MP71254 A/C

- Ⓐ AP3314 HOSE ASSY 04 × 48" PRESSURE
- Ⓑ P53884 TUBING NYLON 3/8 × 60" RETURN
- Ⓒ AP50861 HOSE ASSY 03 × 102" ROD END - ALWAYS PRESSURIZED - MUST BE HIGH PRESSURE HOSES OF EQUAL LENGTH AND DIAMETER
- Ⓓ AP10566 HOSE ASSY 04 × 102" CAP END - MUST MAINTAIN EQUAL LENGTH AND DIAMETER
- Ⓔ AP50907 HOSE ASSY 03 × 48" ROD END - ALWAYS PRESSURIZED - MUST BE HIGH PRESSURE HOSES OF EQUAL LENGTH AND DIAMETER
- Ⓕ AP50671 HOSE ASSY 03 × 84" CAP END - MUST MAINTAIN EQUAL LENGTH AND DIAMETER
- Ⓖ AP4060 HOSE ASSY 04 × 24" CAP END (LIFT)
- Ⓙ AP13844 HOSE ASSY 03 × 78" CAP END (ROOM)
- Ⓚ AP13844 HOSE ASSY 03 × 78" CAP END (ROOM)
- Ⓛ AP50766 HOSE ASSY 03 × 96" ROD END (LIFT) - ALWAYS PRESSURIZED
- Ⓜ AP13844 HOSE ASSY 03 × 78" CAP END (LIFT)
- Ⓝ AP4060 HOSE ASSY 04 × 24" ROD END - ALWAYS PRESSURIZED (LIFT)
- Ⓟ AP50861 HOSE ASSY 03 × 102" ROD END (LIFT) - ALWAYS PRESSURIZED

- Ⓠ AP50861 HOSE ASSY 03 × 102" CAP END LIFT
- Ⓡ STEEL TUBE CAP END (LIFT)

AP60785 HOSE KIT 2RM/UPLD

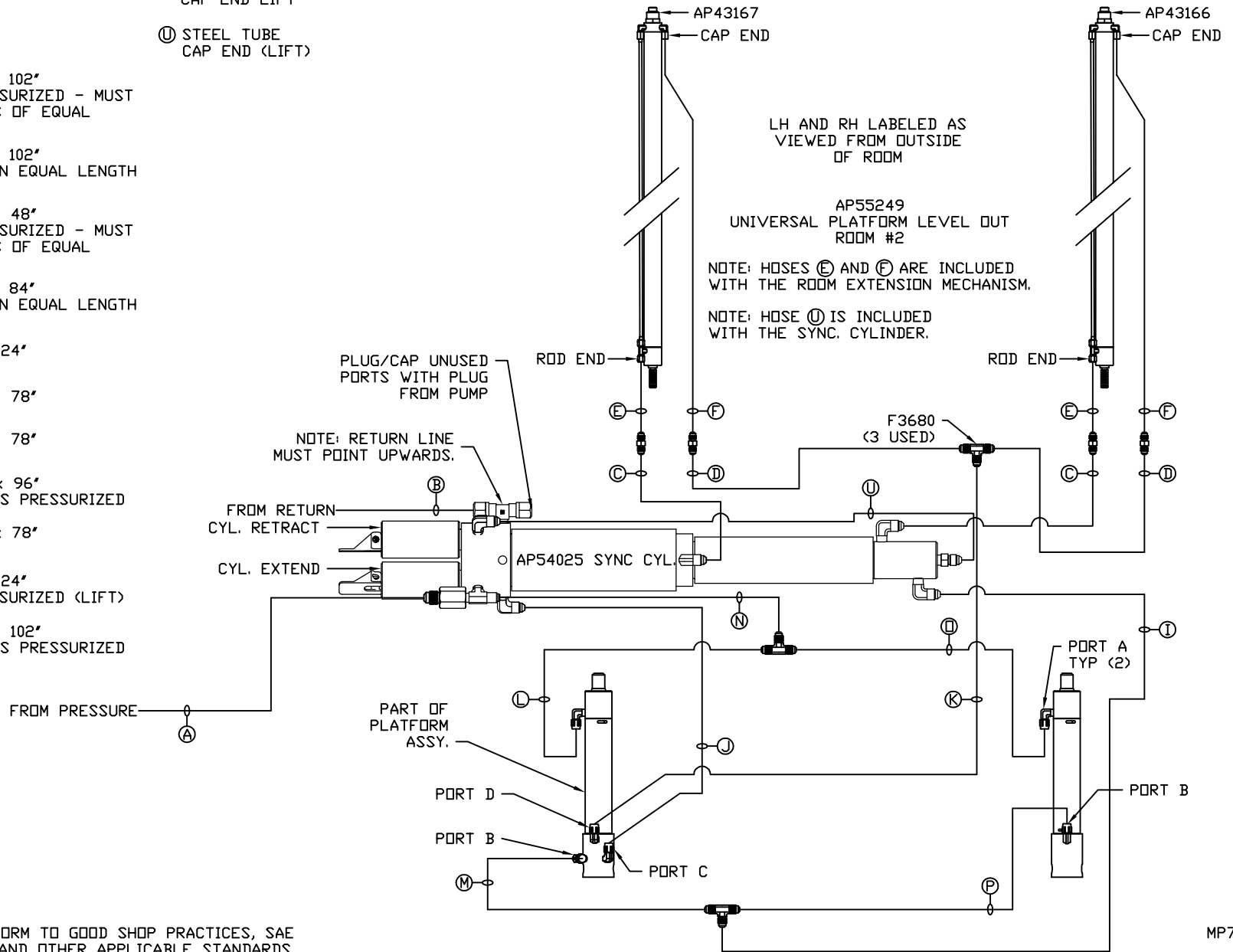


NOTE: INSTALLATION MUST CONFORM TO GOOD SHOP PRACTICES, SAE STANDARDS, RVIA STANDARDS, AND OTHER APPLICABLE STANDARDS.

MP71254 B/C
04DEC19

- Ⓐ AP4161 HOSE ASSY 03 x 120" PRESSURE
- Ⓑ TUBING NYLON 3/8 RETURN
- Ⓒ AP50861 HOSE ASSY 03 x 102" ROD END - ALWAYS PRESSURIZED - MUST BE HIGH PRESSURE HOSES OF EQUAL LENGTH AND DIAMETER
- Ⓓ AP10566 HOSE ASSY 04 x 102" CAP END - MUST MAINTAIN EQUAL LENGTH AND DIAMETER
- Ⓔ AP50907 HOSE ASSY 03 x 48" ROD END - ALWAYS PRESSURIZED - MUST BE HIGH PRESSURE HOSES OF EQUAL LENGTH AND DIAMETER
- Ⓕ AP50671 HOSE ASSY 03 x 84" CAP END - MUST MAINTAIN EQUAL LENGTH AND DIAMETER
- Ⓖ AP4060 HOSE ASSY 04 x 24" CAP END (LIFT)
- Ⓙ AP13844 HOSE ASSY 03 x 78" CAP END (ROOM)
- Ⓚ AP13844 HOSE ASSY 03 x 78" CAP END (ROOM)
- Ⓛ AP50766 HOSE ASSY 03 x 96" ROD END (LIFT) - ALWAYS PRESSURIZED
- Ⓜ AP13844 HOSE ASSY 03 x 78" CAP END (LIFT)
- Ⓝ AP4060 HOSE ASSY 04 x 24" ROD END - ALWAYS PRESSURIZED (LIFT)
- Ⓟ AP50861 HOSE ASSY 03 x 102" ROD END (LIFT) - ALWAYS PRESSURIZED

- Ⓠ AP50861 HOSE ASSY 03 x 102" CAP END LIFT
- Ⓡ STEEL TUBE CAP END (LIFT)



NOTE: INSTALLATION MUST CONFORM TO GOOD SHOP PRACTICES, SAE STANDARDS, RVIA STANDARDS, AND OTHER APPLICABLE STANDARDS.

MP71254 C/C
04DEC19