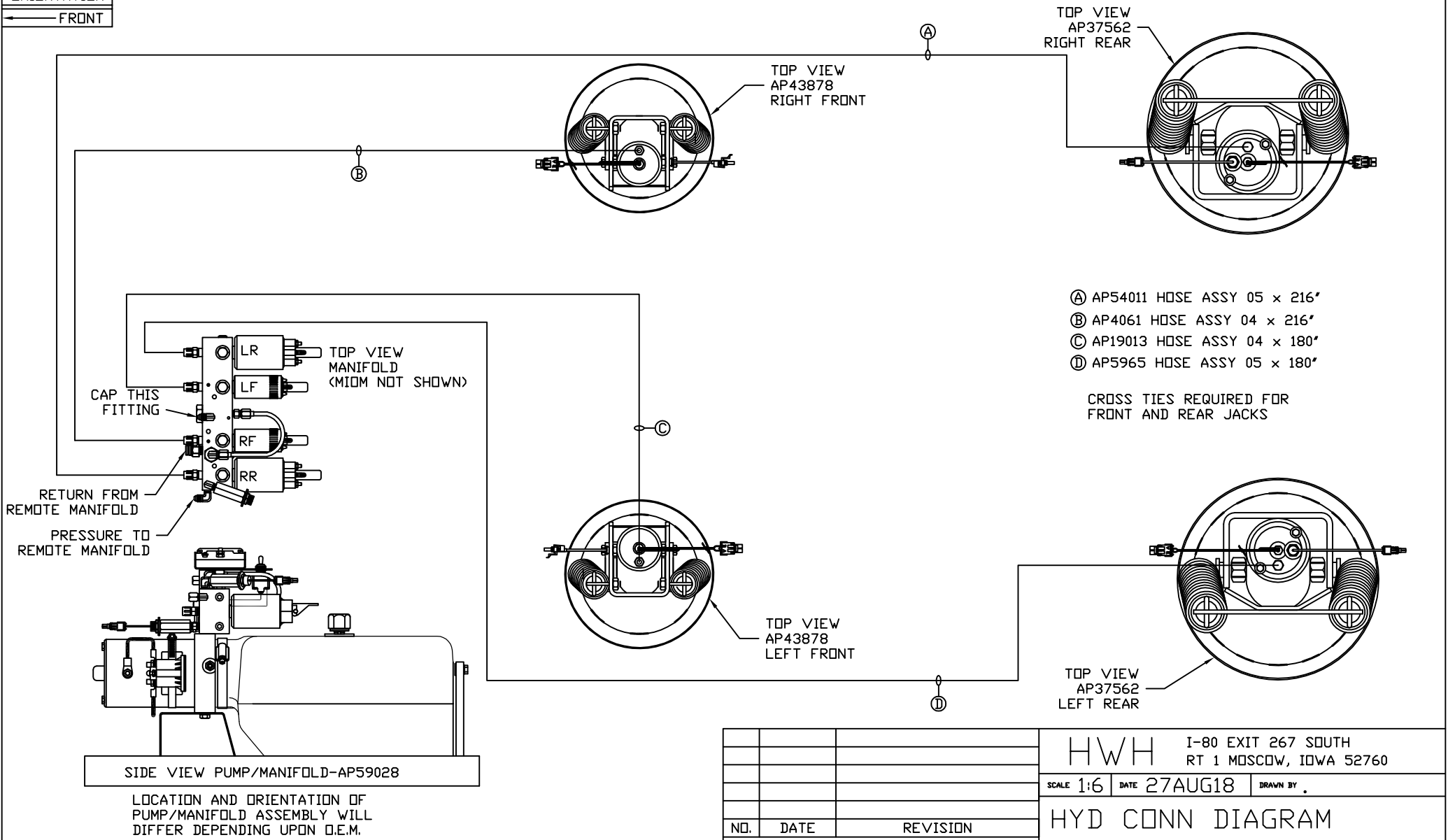


ORIENTATION
← FRONT



NOTE: INSTALLATION MUST CONFORM TO GOOD SHOP PRACTICES, SAE STANDARDS, RVIA STANDARDS, AND OTHER APPLICABLE STANDARDS.

LEVELING SYSTEM: AP59348

NO.	DATE	REVISION

HWH I-80 EXIT 267 SOUTH
RT 1 MOSCOW, IOWA 52760

SCALE 1:6 DATE 27AUG18 DRAWN BY .

HYD CONN DIAGRAM

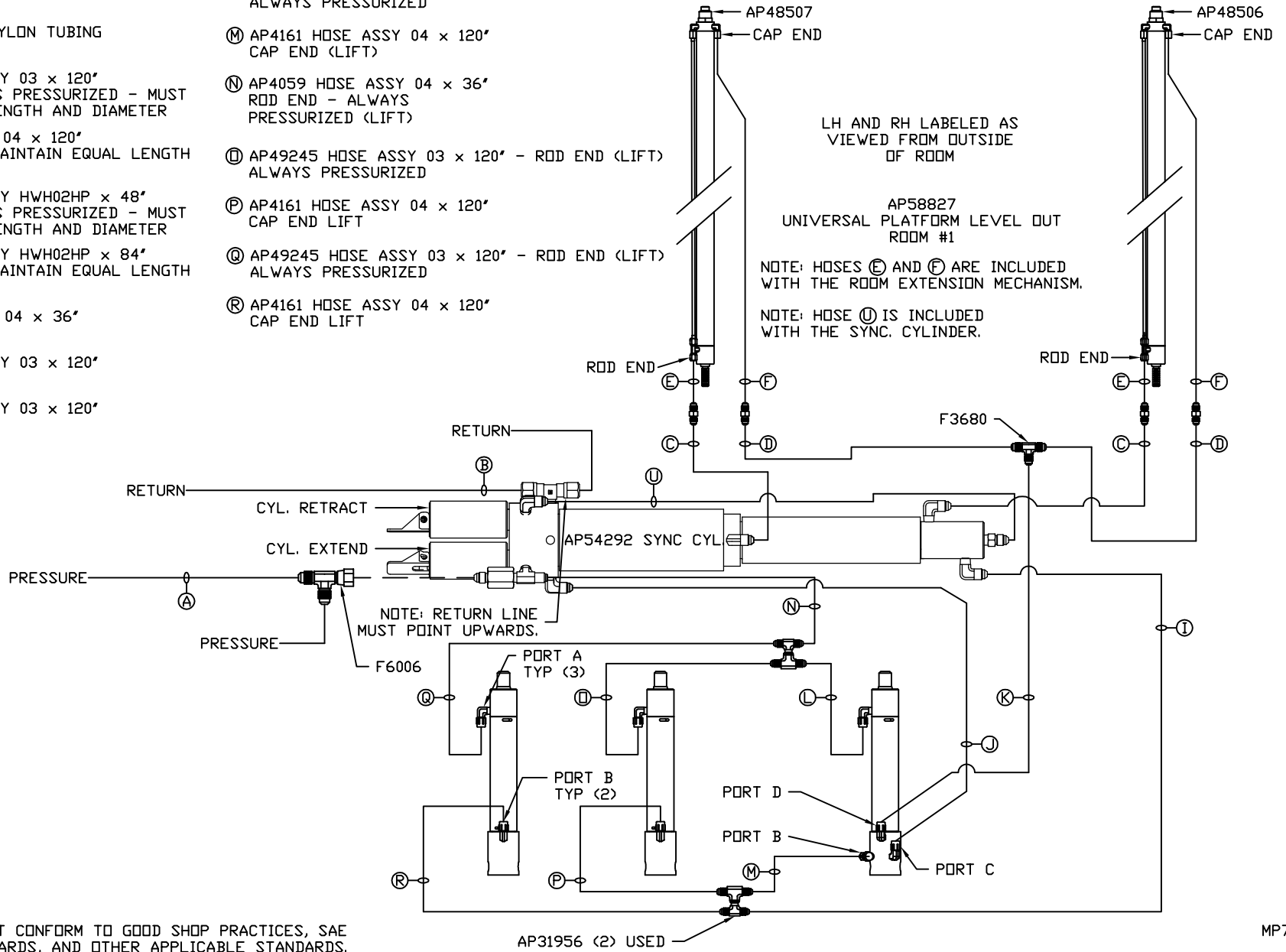
THE INFORMATION DISCLOSED ON THIS DRAWING IS CONFIDENTIAL AND MUST NOT BE DISCLOSED OR USED IN ANY MANNER WHICH WILL BE DETRIMENTAL TO THE HWH CORPORATION

MATTHEWS DRAWING NUMBER
MP71193 A/C

- Ⓐ AP4161 HOSE ASSY 04 × 120" PRESSURE
- Ⓑ P53886 3/8" OD NYLON TUBING RETURN
- Ⓒ AP49245 HOSE ASSY 03 × 120" ROD END - ALWAYS PRESSURIZED - MUST MAINTAIN EQUAL LENGTH AND DIAMETER
- Ⓓ AP4161 HOSE ASSY 04 × 120" CAP END - MUST MAINTAIN EQUAL LENGTH AND DIAMETER
- Ⓔ AP24632 HOSE ASSY HWH02HP × 48" ROD END - ALWAYS PRESSURIZED - MUST MAINTAIN EQUAL LENGTH AND DIAMETER
- Ⓕ AP24636 HOSE ASSY HWH02HP × 84" CAP END - MUST MAINTAIN EQUAL LENGTH AND DIAMETER
- Ⓖ AP4059 HOSE ASSY 04 × 36" CAP END (LIFT)
- Ⓙ AP49245 HOSE ASSY 03 × 120" CAP END (ROOM)
- Ⓚ AP49245 HOSE ASSY 03 × 120" CAP END (ROOM)

- Ⓛ AP49245 HOSE ASSY 03 × 120" - ROD END (LIFT) ALWAYS PRESSURIZED
- Ⓜ AP4161 HOSE ASSY 04 × 120" CAP END (LIFT)
- Ⓝ AP4059 HOSE ASSY 04 × 36" ROD END - ALWAYS PRESSURIZED (LIFT)
- Ⓟ AP49245 HOSE ASSY 03 × 120" - ROD END (LIFT) ALWAYS PRESSURIZED
- Ⓠ AP4161 HOSE ASSY 04 × 120" CAP END LIFT
- Ⓡ AP49245 HOSE ASSY 03 × 120" - ROD END (LIFT) ALWAYS PRESSURIZED
- Ⓢ AP4161 HOSE ASSY 04 × 120" CAP END LIFT

AP59351 HOSE KIT 2RM/UPLD/USD

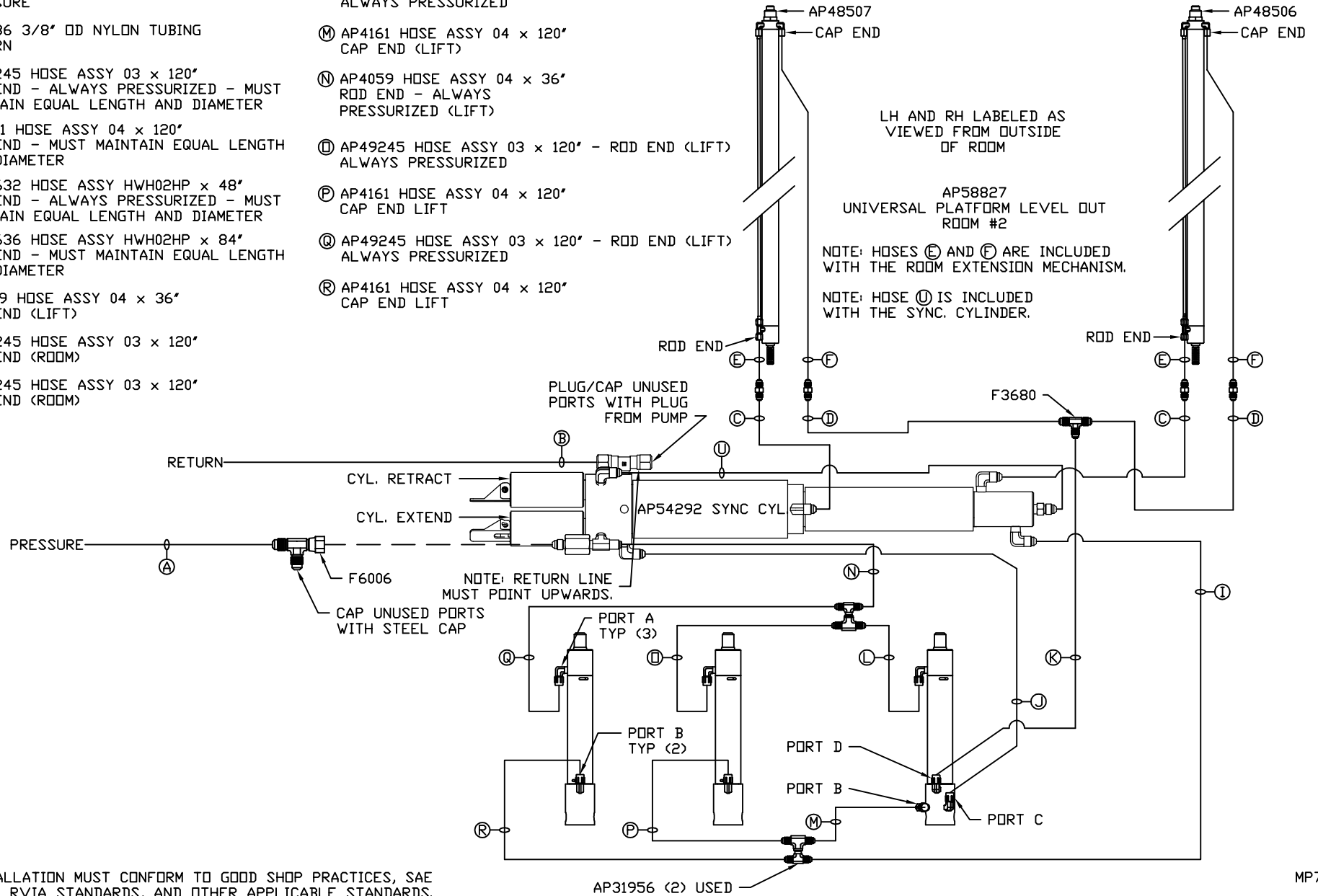


NOTE: INSTALLATION MUST CONFORM TO GOOD SHOP PRACTICES, SAE STANDARDS, RVIA STANDARDS, AND OTHER APPLICABLE STANDARDS.

MP71193 B/C
27AUG18

- Ⓐ AP4161 HOSE ASSY 04 x 120' PRESSURE
- Ⓑ P53886 3/8" OD NYLON TUBING RETURN
- Ⓒ AP49245 HOSE ASSY 03 x 120' ROD END - ALWAYS PRESSURIZED - MUST MAINTAIN EQUAL LENGTH AND DIAMETER
- Ⓓ AP4161 HOSE ASSY 04 x 120' CAP END - MUST MAINTAIN EQUAL LENGTH AND DIAMETER
- Ⓔ AP24632 HOSE ASSY HWH02HP x 48' ROD END - ALWAYS PRESSURIZED - MUST MAINTAIN EQUAL LENGTH AND DIAMETER
- Ⓕ AP24636 HOSE ASSY HWH02HP x 84' CAP END - MUST MAINTAIN EQUAL LENGTH AND DIAMETER
- Ⓖ AP4059 HOSE ASSY 04 x 36' CAP END (LIFT)
- Ⓙ AP49245 HOSE ASSY 03 x 120' CAP END (ROOM)
- Ⓚ AP49245 HOSE ASSY 03 x 120' CAP END (ROOM)

- Ⓛ AP49245 HOSE ASSY 03 x 120' - ROD END (LIFT) ALWAYS PRESSURIZED
- Ⓜ AP4161 HOSE ASSY 04 x 120' CAP END (LIFT)
- Ⓝ AP4059 HOSE ASSY 04 x 36' ROD END - ALWAYS PRESSURIZED (LIFT)
- Ⓟ AP49245 HOSE ASSY 03 x 120' - ROD END (LIFT) ALWAYS PRESSURIZED
- Ⓠ AP4161 HOSE ASSY 04 x 120' CAP END LIFT
- Ⓡ AP49245 HOSE ASSY 03 x 120' - ROD END (LIFT) ALWAYS PRESSURIZED
- Ⓢ AP4161 HOSE ASSY 04 x 120' CAP END LIFT



LH AND RH LABELED AS VIEWED FROM OUTSIDE OF ROOM

AP58827
UNIVERSAL PLATFORM LEVEL OUT ROOM #2

NOTE: HOSES Ⓔ AND Ⓕ ARE INCLUDED WITH THE ROOM EXTENSION MECHANISM.

NOTE: HOSE Ⓡ IS INCLUDED WITH THE SYNC. CYLINDER.

NOTE: INSTALLATION MUST CONFORM TO GOOD SHOP PRACTICES, SAE STANDARDS, RVIA STANDARDS, AND OTHER APPLICABLE STANDARDS.

MP71193 C/C
27AUG18