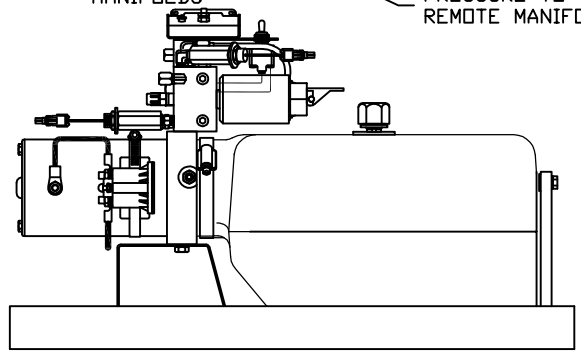
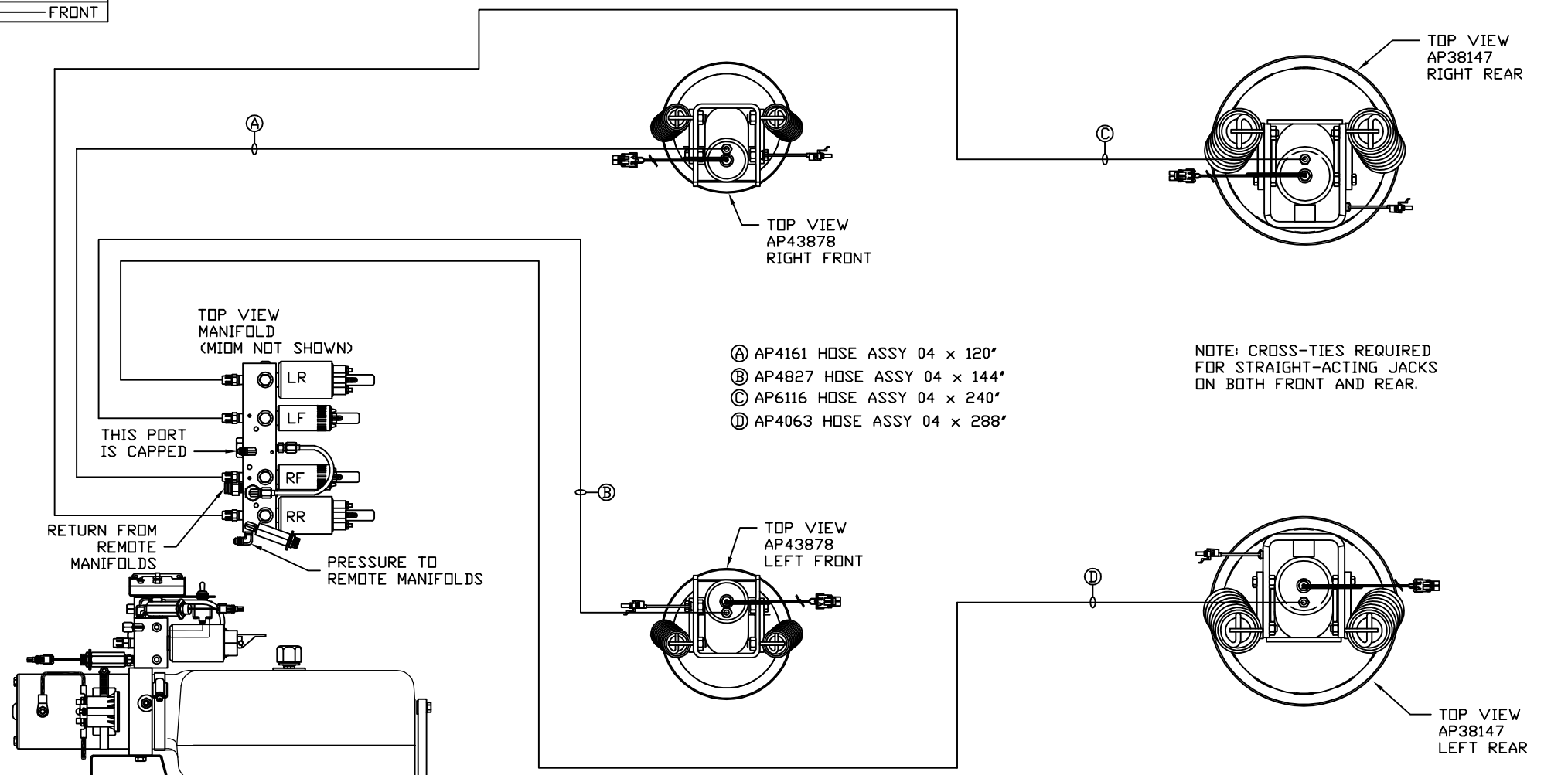


ORIENTATION
← FRONT



SIDE VIEW PUMP/MANIFOLD-AP59028
LOCATION AND ORIENTATION OF PUMP/MANIFOLD ASSEMBLY WILL DIFFER DEPENDING UPON O.E.M.

NOTE: INSTALLATION MUST CONFORM TO GOOD SHOP PRACTICES, SAE STANDARDS, RVIA STANDARDS, AND OTHER APPLICABLE STANDARDS.

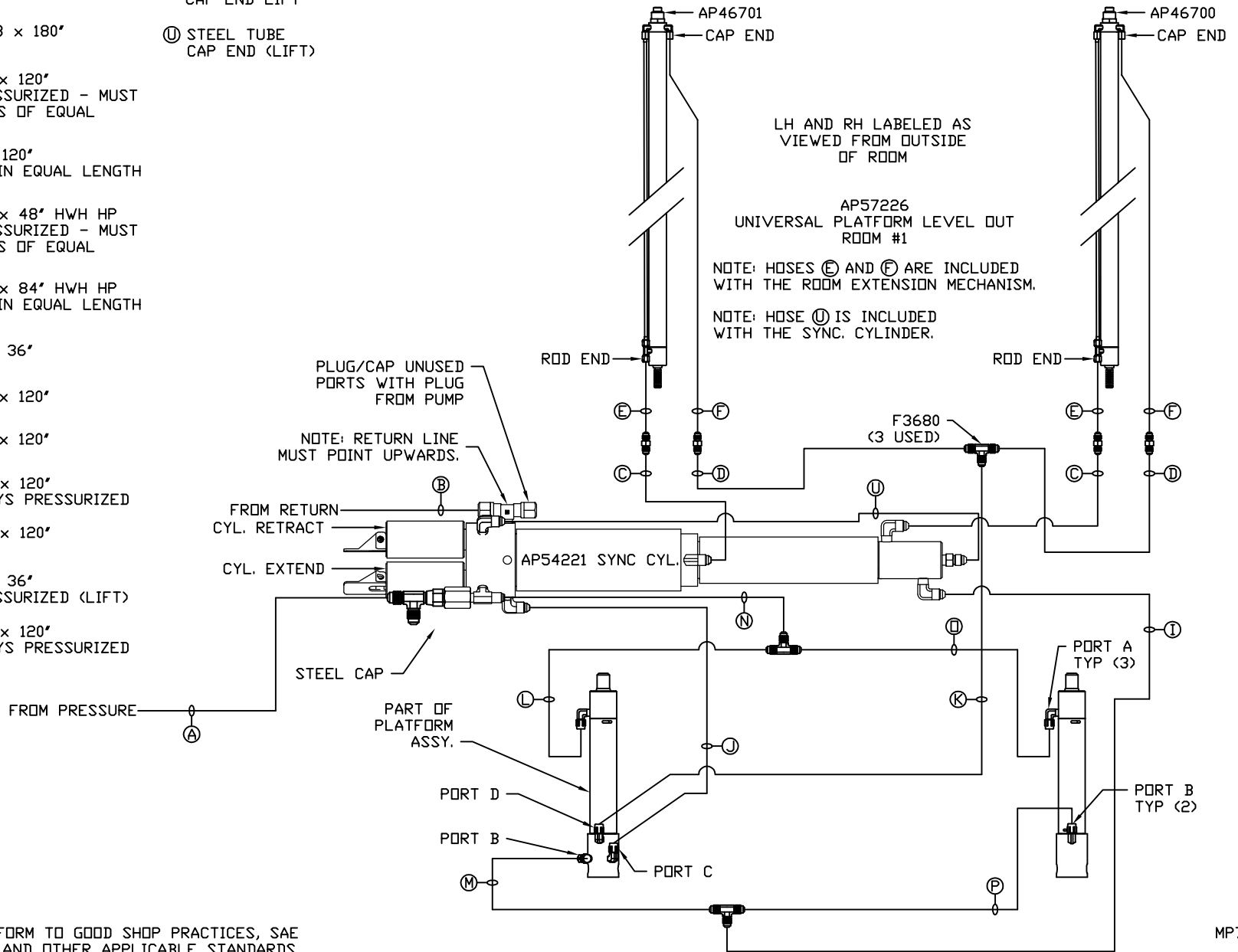
LEVELING SYSTEM: AP59342

		HWH		I-80 EXIT 267 SOUTH RT 1 MOSCOW, IOWA 52760	
		SCALE 1:6	DATE 21AUG18	DRAWN BY .	
		HYD CONN DIAGRAM			
NO.	DATE	REVISION			
		MATTHEWS		DRAWING NUMBER MP71192 A/B	
THE INFORMATION DISCLOSED ON THIS DRAWING IS CONFIDENTIAL AND MUST NOT BE DISCLOSED OR USED IN ANY MANNER WHICH WILL BE DETRIMENTAL TO THE HWH CORPORATION					

- Ⓐ AP4161 HOSE ASSY 04 x 120" PRESSURE
- Ⓑ P5145 TUBING NYLON 3/8 x 180" RETURN
- Ⓒ AP49245 HOSE ASSY 03 x 120" ROD END - ALWAYS PRESSURIZED - MUST BE HIGH PRESSURE HOSES OF EQUAL LENGTH AND DIAMETER
- Ⓓ AP4161 HOSE ASSY 04 x 120" CAP END - MUST MAINTAIN EQUAL LENGTH AND DIAMETER
- Ⓔ AP24632 HOSE ASSY 02 x 48" HWH HP ROD END - ALWAYS PRESSURIZED - MUST BE HIGH PRESSURE HOSES OF EQUAL LENGTH AND DIAMETER
- Ⓕ AP24636 HOSE ASSY 02 x 84" HWH HP CAP END - MUST MAINTAIN EQUAL LENGTH AND DIAMETER
- Ⓖ AP4059 HOSE ASSY 04 x 36" CAP END (LIFT)
- Ⓙ AP49245 HOSE ASSY 03 x 120" CAP END (ROOM)
- Ⓚ AP49245 HOSE ASSY 03 x 120" CAP END (ROOM)
- Ⓛ AP49245 HOSE ASSY 03 x 120" ROD END (LIFT) - ALWAYS PRESSURIZED
- Ⓜ AP49245 HOSE ASSY 03 x 120" CAP END (LIFT)
- Ⓝ AP4059 HOSE ASSY 04 x 36" ROD END - ALWAYS PRESSURIZED (LIFT)
- Ⓟ AP49245 HOSE ASSY 03 x 120" ROD END (LIFT) - ALWAYS PRESSURIZED

- Ⓠ AP49245 HOSE ASSY 03 x 120" CAP END LIFT
- Ⓡ STEEL TUBE CAP END (LIFT)

AP59341 HOSE KIT ROOM 1 / UPLD



NOTE: INSTALLATION MUST CONFORM TO GOOD SHOP PRACTICES, SAE STANDARDS, RVIA STANDARDS, AND OTHER APPLICABLE STANDARDS.

MP71192 B/B
21AUG18