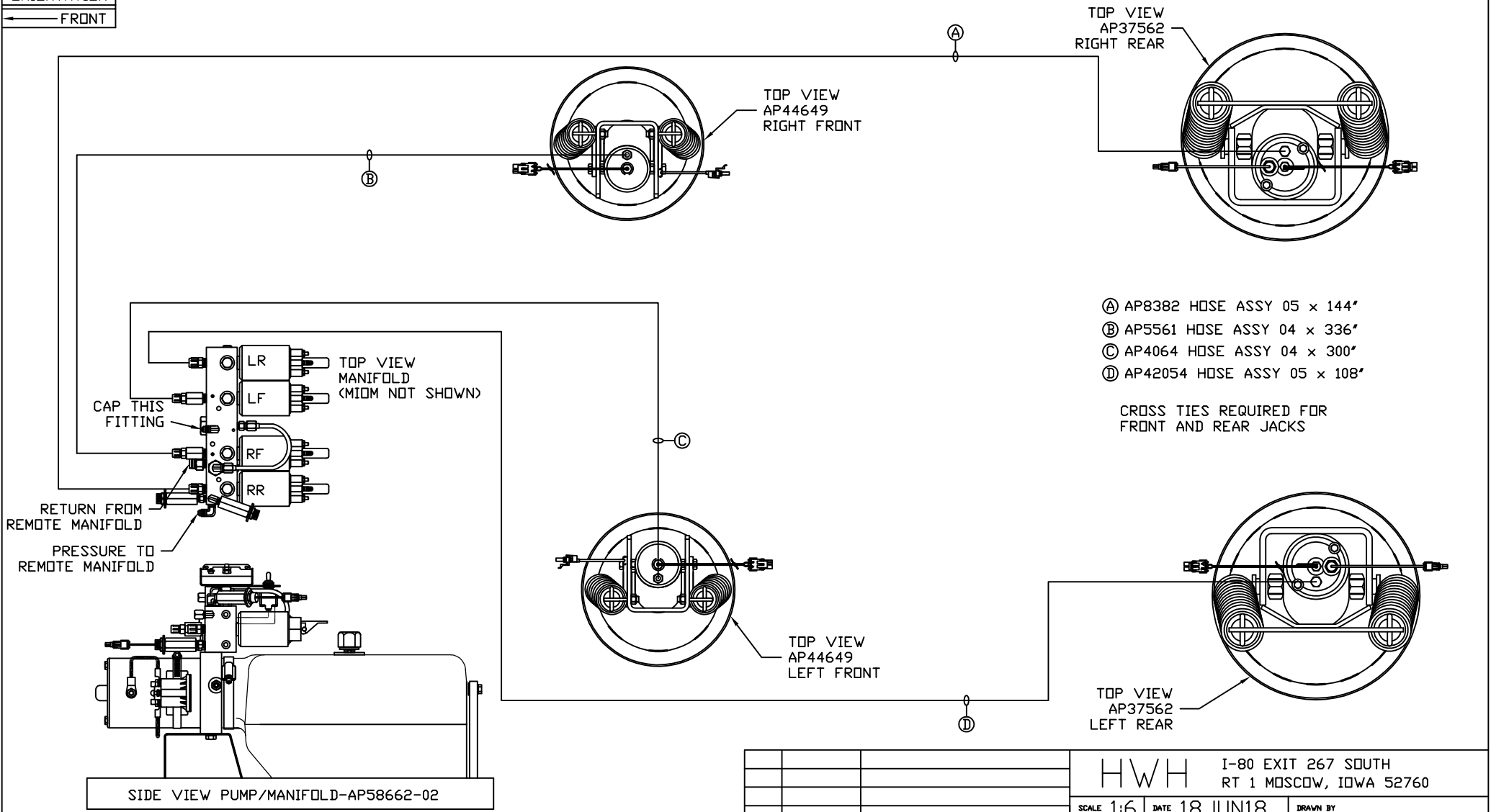


ORIENTATION  
← FRONT



- Ⓐ AP8382 HOSE ASSY 05 x 144'
- Ⓑ AP5561 HOSE ASSY 04 x 336'
- Ⓒ AP4064 HOSE ASSY 04 x 300'
- Ⓓ AP42054 HOSE ASSY 05 x 108'

CROSS TIES REQUIRED FOR FRONT AND REAR JACKS

SIDE VIEW PUMP/MANIFOLD-AP58662-02

LOCATION AND ORIENTATION OF PUMP/MANIFOLD ASSEMBLY WILL DIFFER DEPENDING UPON O.E.M.

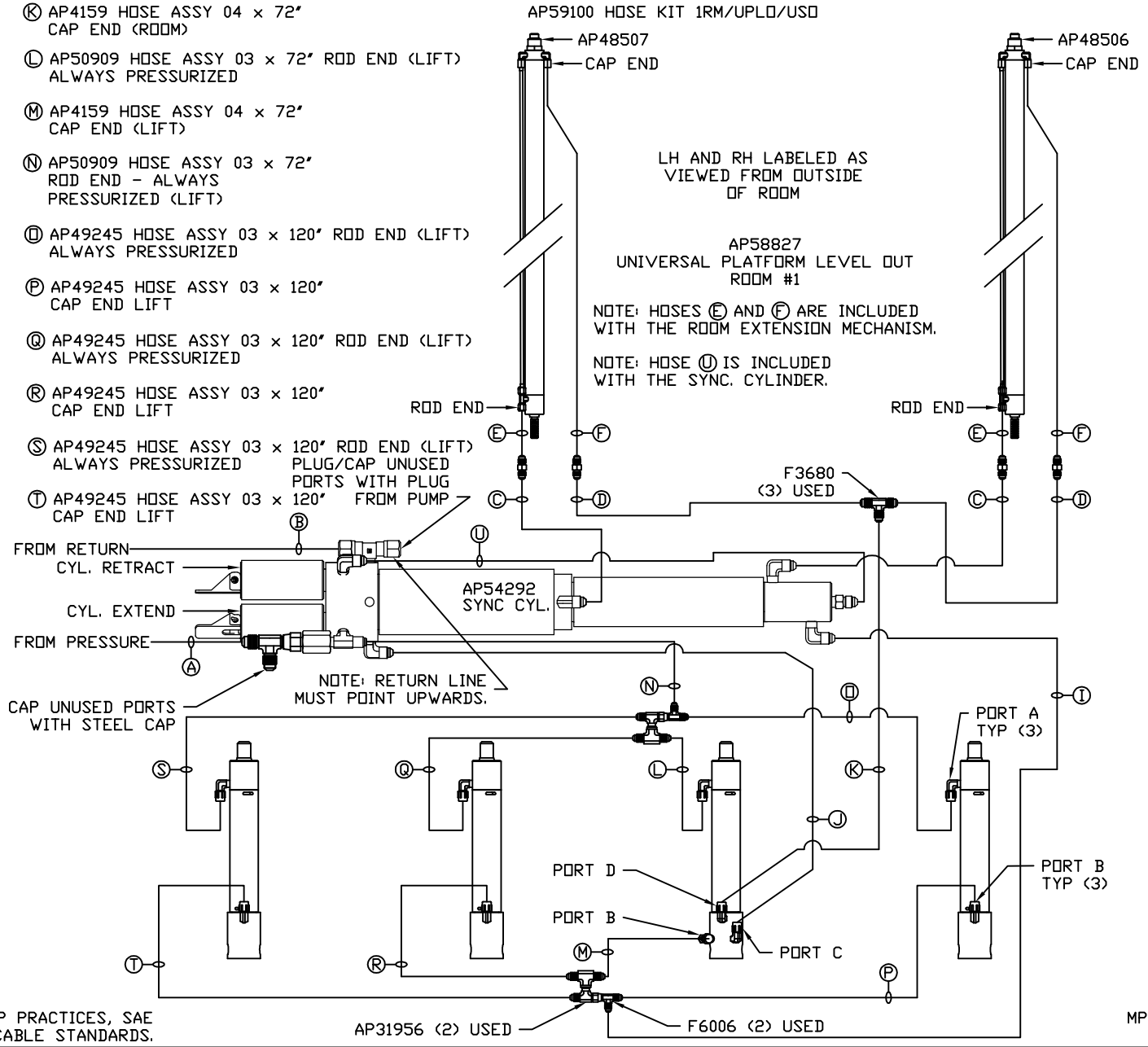
NOTE: INSTALLATION MUST CONFORM TO GOOD SHOP PRACTICES, SAE STANDARDS, RVIA STANDARDS, AND OTHER APPLICABLE STANDARDS.

LEVELING SYSTEM: AP59097

		<b>HWH</b>		I-80 EXIT 267 SOUTH RT 1 MOSCOW, IOWA 52760	
		SCALE 1:6	DATE 18JUN18	DRAWN BY .	
		HYD CONN DIAGRAM			
NO.	DATE	REVISION			
		THE INFORMATION DISCLOSED ON THIS DRAWING IS CONFIDENTIAL AND MUST NOT BE DISCLOSED OR USED IN ANY MANNER WHICH WILL BE DETRIMENTAL TO THE HWH CORPORATION			
			MATTHEWS		DRAWING NUMBER MP71187 A/B

- Ⓐ AP4159 HOSE ASSY 04 x 72" PRESSURE
- Ⓑ P55310 NYLON TUBING 3/8" x 72" RETURN
- Ⓒ AP49245 HOSE ASSY 03 x 120" ROD END - ALWAYS PRESSURIZED - MUST MAINTAIN EQUAL LENGTH AND DIAMETER
- Ⓓ AP49245 HOSE ASSY 03 x 120" CAP END - MUST MAINTAIN EQUAL LENGTH AND DIAMETER
- Ⓔ AP24632 HOSE ASSY HWH02HP x 48" ROD END - ALWAYS PRESSURIZED - MUST MAINTAIN EQUAL LENGTH AND DIAMETER
- Ⓕ AP24636 HOSE ASSY HWH02HP x 84" CAP END - MUST MAINTAIN EQUAL LENGTH AND DIAMETER
- Ⓖ AP4159 HOSE ASSY 04 x 72" CAP END (LIFT)
- Ⓙ AP50909 HOSE ASSY 03 x 72" CAP END (ROOM)

- Ⓚ AP4159 HOSE ASSY 04 x 72" CAP END (ROOM)
- Ⓛ AP50909 HOSE ASSY 03 x 72" ROD END (LIFT) ALWAYS PRESSURIZED
- Ⓜ AP4159 HOSE ASSY 04 x 72" CAP END (LIFT)
- Ⓝ AP50909 HOSE ASSY 03 x 72" ROD END - ALWAYS PRESSURIZED (LIFT)
- Ⓟ AP49245 HOSE ASSY 03 x 120" ROD END (LIFT) ALWAYS PRESSURIZED
- Ⓠ AP49245 HOSE ASSY 03 x 120" CAP END LIFT
- Ⓡ AP49245 HOSE ASSY 03 x 120" ROD END (LIFT) ALWAYS PRESSURIZED
- Ⓢ AP49245 HOSE ASSY 03 x 120" CAP END LIFT
- Ⓣ AP49245 HOSE ASSY 03 x 120" ROD END (LIFT) ALWAYS PRESSURIZED
- Ⓤ AP49245 HOSE ASSY 03 x 120" CAP END LIFT



LH AND RH LABELED AS VIEWED FROM OUTSIDE OF ROOM

AP58827  
UNIVERSAL PLATFORM LEVEL OUT ROOM #1

NOTE: HOSES Ⓔ AND Ⓕ ARE INCLUDED WITH THE ROOM EXTENSION MECHANISM.

NOTE: HOSE Ⓖ IS INCLUDED WITH THE SYNC. CYLINDER.

NOTE: RETURN LINE MUST POINT UPWARDS.

NOTE: INSTALLATION MUST CONFORM TO GOOD SHOP PRACTICES, SAE STANDARDS, RVIA STANDARDS, AND OTHER APPLICABLE STANDARDS.

MP71187 B/B  
18JUN18