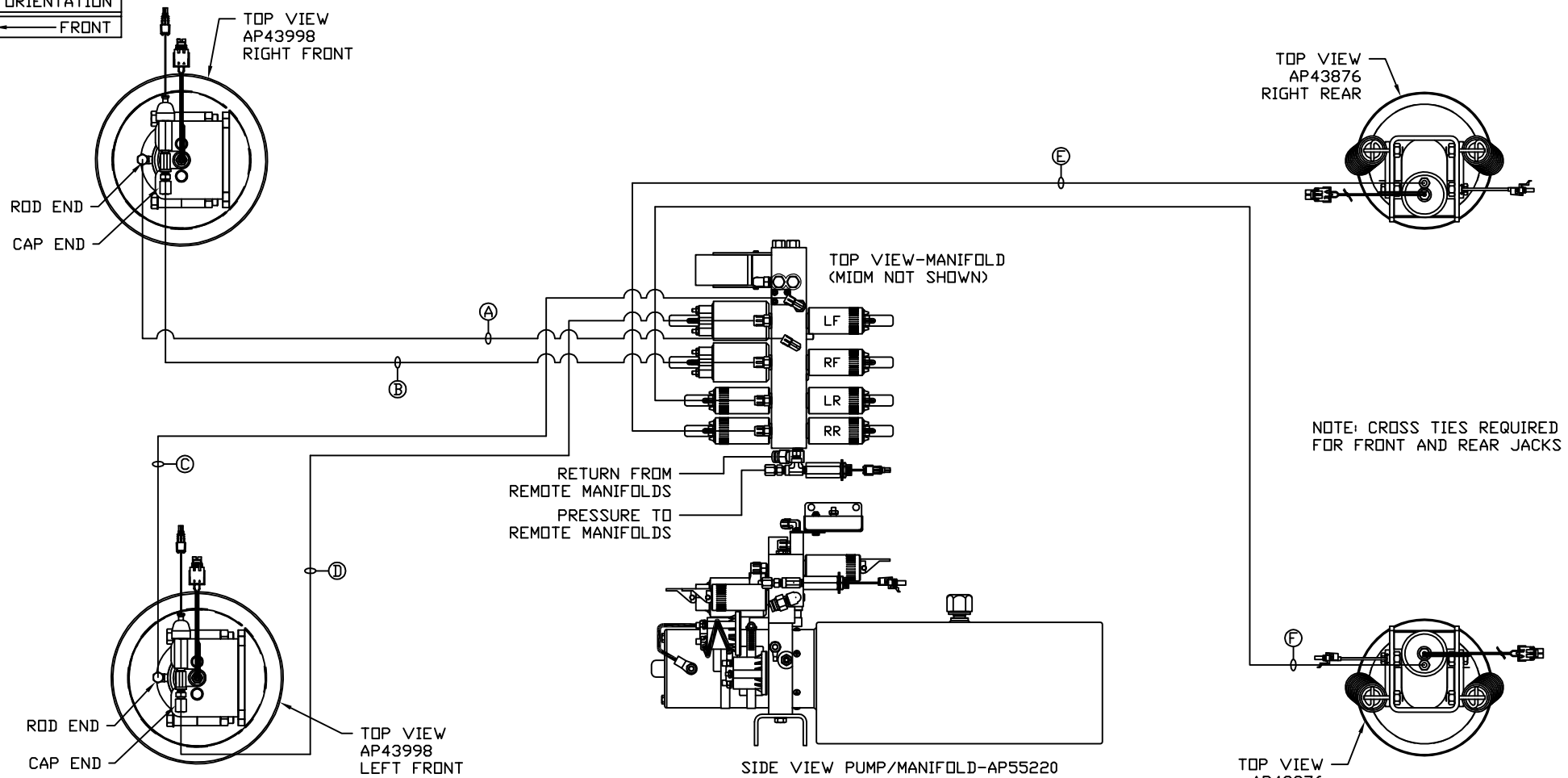


ORIENTATION
← FRONT



- Ⓐ AP6116 HOSE ASSY 04 X 240' - RF ROD END
- Ⓑ AP22078 HOSE ASSY 05 X 204' - RF CAP END
- Ⓒ AP4065 HOSE ASSY 04 X 156' - LF ROD END
- Ⓓ AP7818 HOSE ASSY 05 X 120' - LF CAP END
- Ⓔ AP5925 HOSE ASSY 04 X 444' - RR CAP END
- Ⓕ AP4391 HOSE ASSY 04 X 372' - LR CAP END

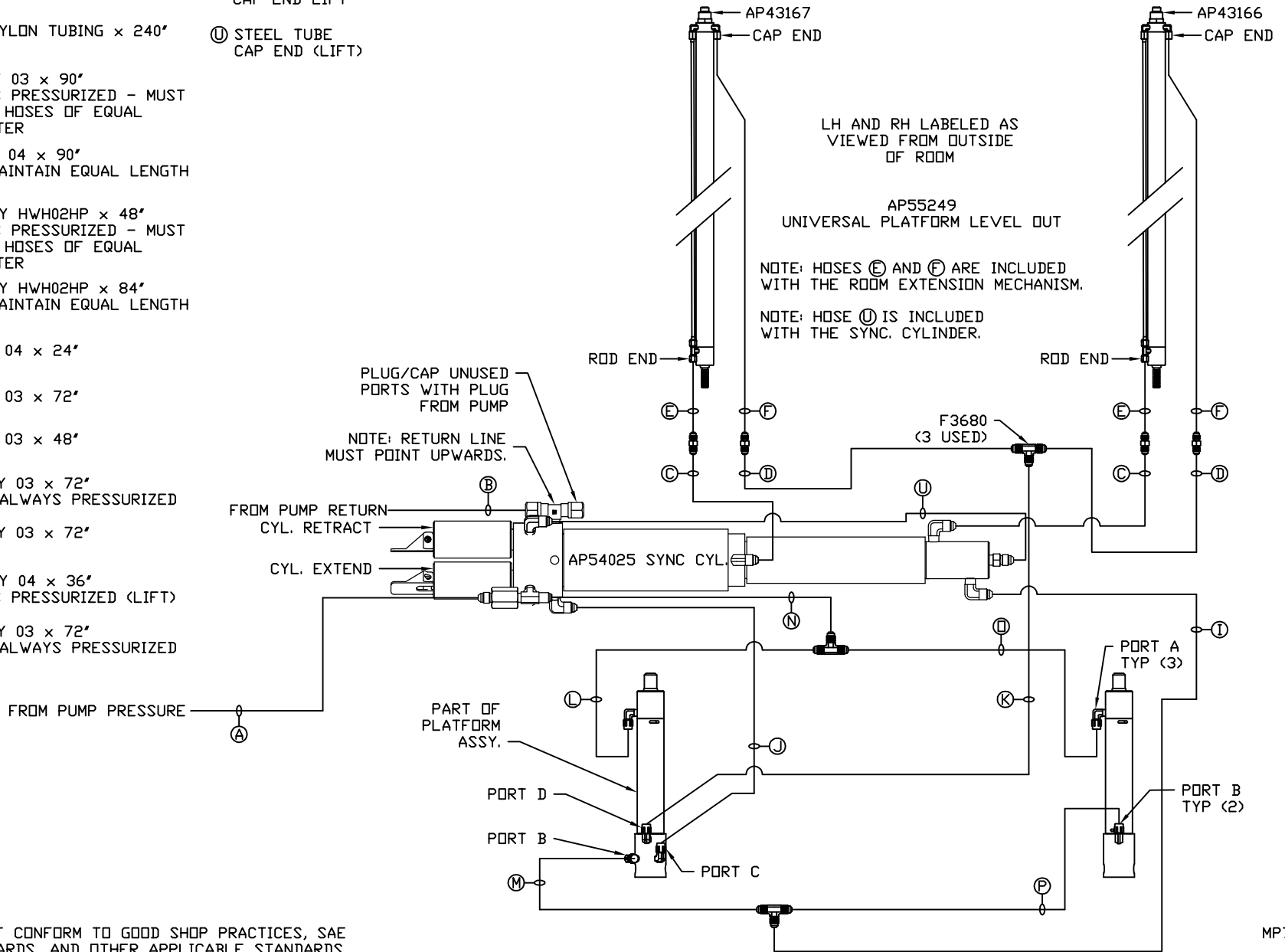
NOTE: INSTALLATION MUST CONFORM TO GOOD SHOP PRACTICES, SAE STANDARDS, RVIA STANDARDS, AND OTHER APPLICABLE STANDARDS.

LEVELING SYSTEM: AP58258

		HWH I-80 EXIT 267 SOUTH RT 1 MOSCOW, IOWA 52760	
		SCALE 1:6	DATE 10NOV17
		DRAWN BY .	
HYD CONN DIAGRAM			
NO.	DATE	REVISION	
THE INFORMATION DISCLOSED ON THIS DRAWING IS CONFIDENTIAL AND MUST NOT BE DISCLOSED OR USED IN ANY MANNER WHICH WILL BE DETRIMENTAL TO THE HWH CORPORATION			
ROLLINGSTAR			DRAWING NUMBER MP71124 A/B

- (A) AP6116 HOSE ASSY 04 x 204" PRESSURE
- (B) P53886 .375" OD NYLON TUBING x 240" RETURN
- (C) AP50910 HOSE ASSY 03 x 90" ROD END - ALWAYS PRESSURIZED - MUST BE HIGH PRESSURE HOSES OF EQUAL LENGTH AND DIAMETER
- (D) AP2445 HOSE ASSY 04 x 90" CAP END - MUST MAINTAIN EQUAL LENGTH AND DIAMETER
- (E) AP24632 HOSE ASSY HWH02HP x 48" ROD END - ALWAYS PRESSURIZED - MUST BE HIGH PRESSURE HOSES OF EQUAL LENGTH AND DIAMETER
- (F) AP24636 HOSE ASSY HWH02HP x 84" CAP END - MUST MAINTAIN EQUAL LENGTH AND DIAMETER
- (I) AP4060 HOSE ASSY 04 x 24" CAP END (LIFT)
- (J) AP4159 HOSE ASSY 03 x 72" CAP END (ROOM)
- (K) AP3314 HOSE ASSY 03 x 48" CAP END (ROOM)
- (L) AP50909 HOSE ASSY 03 x 72" ROD END (LIFT) - ALWAYS PRESSURIZED
- (M) AP50909 HOSE ASSY 03 x 72" CAP END (LIFT)
- (N) AP48866 HOSE ASSY 04 x 36" ROD END - ALWAYS PRESSURIZED (LIFT)
- (O) AP50909 HOSE ASSY 03 x 72" ROD END (LIFT) - ALWAYS PRESSURIZED

- (P) AP4159 HOSE ASSY 03 x 72" CAP END LIFT
 - (U) STEEL TUBE CAP END (LIFT)
- AP58261 HOSE KIT 1RM/UPLD



NOTE: INSTALLATION MUST CONFORM TO GOOD SHOP PRACTICES, SAE STANDARDS, RVIA STANDARDS, AND OTHER APPLICABLE STANDARDS.

MP71124 B/B
10NOV17