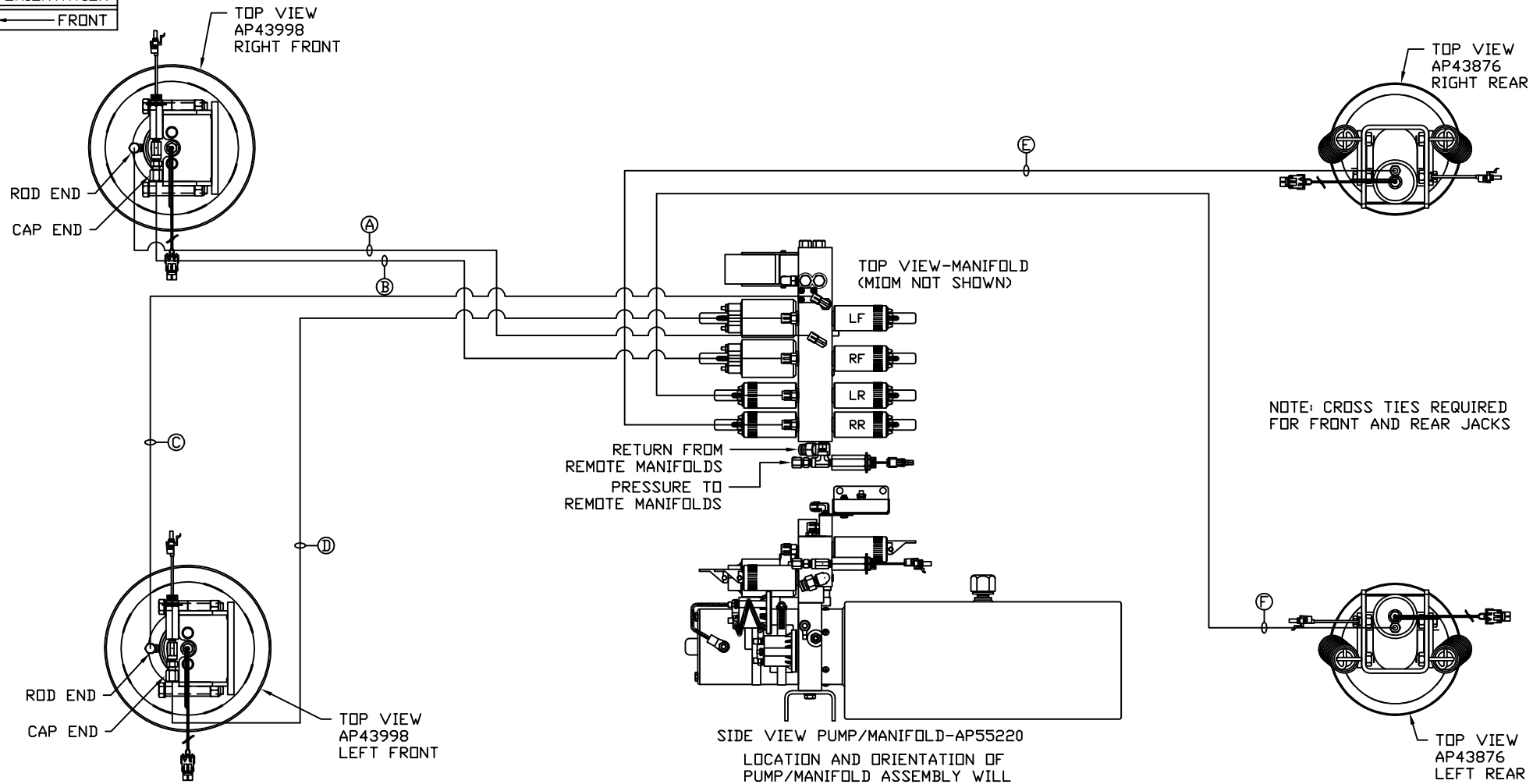


ORIENTATION  
← FRONT



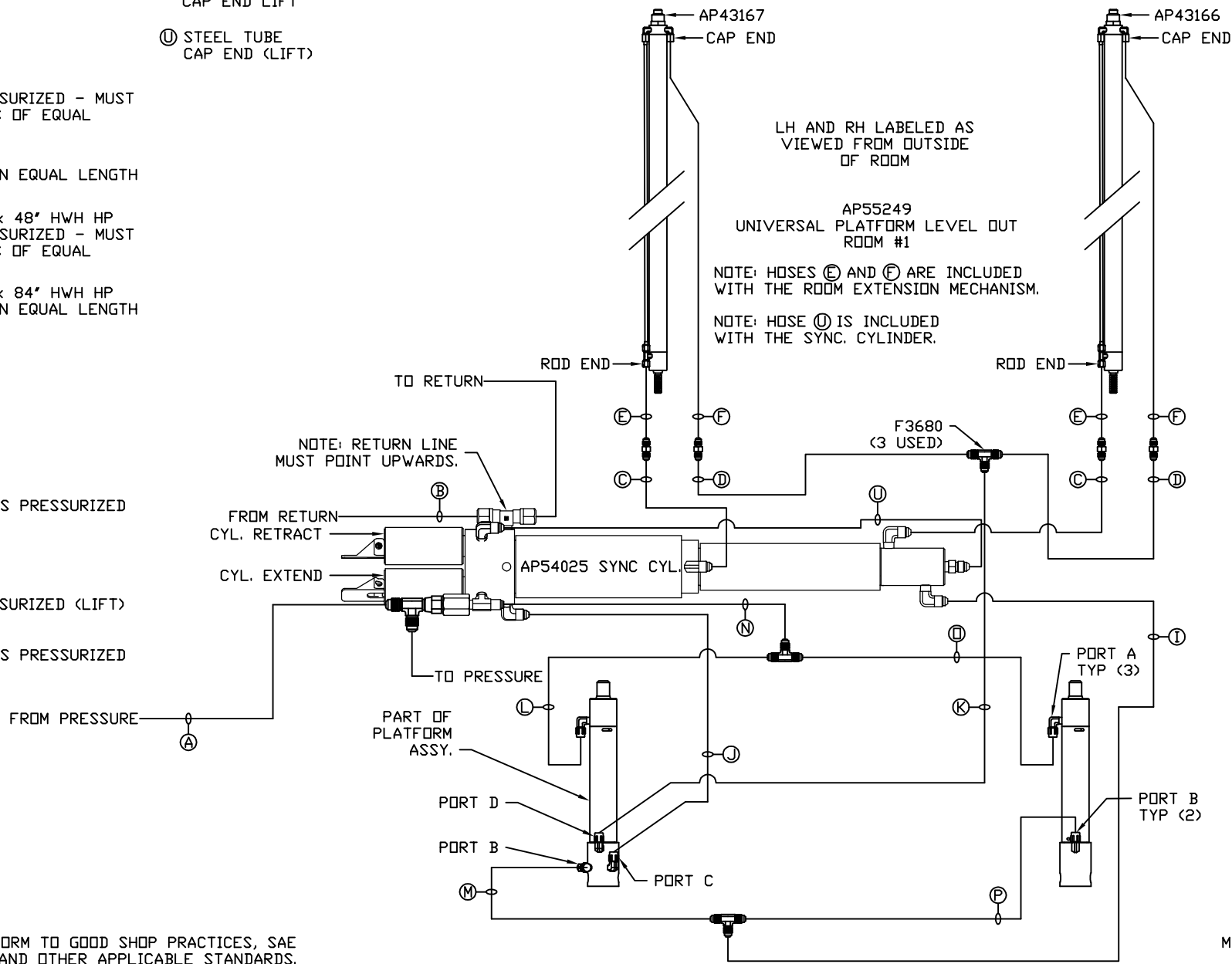
- Ⓐ AP4906 HOSE ASSY 04 X 126' - RF ROD END
- Ⓑ AP22077 HOSE ASSY 05 X 156' - RF CAP END
- Ⓒ AP4073 HOSE ASSY 04 X 60' - LF ROD END
- Ⓓ AP42052 HOSE ASSY 05 X 90' - RF CAP END
- Ⓔ AP7175 HOSE ASSY 04 X 540' - RR CAP END
- Ⓕ AP7178 HOSE ASSY 04 X 504' - LR CAP END

NOTE: INSTALLATION MUST CONFORM TO GOOD SHOP PRACTICES, SAE STANDARDS, RVIA STANDARDS, AND OTHER APPLICABLE STANDARDS.

LEVELING SYSTEM: AP57396

		HWH I-80 EXIT 267 SOUTH RT 1 MOSCOW, IOWA 52760	
SCALE 1:6	DATE 06FEB17	DRAWN BY .	
HYD CONN DIAGRAM			
NO.	DATE	REVISION	
THE INFORMATION DISCLOSED ON THIS DRAWING IS CONFIDENTIAL AND MUST NOT BE DISCLOSED OR USED IN ANY MANNER WHICH WILL BE DETRIMENTAL TO THE HWH CORPORATION			
ROLLINGSTAR			DRAWING NUMBER MP71061 A/C

- Ⓐ HOSE ASSY 04  
PRESSURE
- Ⓑ .375" OD NYLON TUBING  
RETURN
- Ⓒ HOSE ASSY 03  
ROD END - ALWAYS PRESSURIZED - MUST  
BE HIGH PRESSURE HOSES OF EQUAL  
LENGTH AND DIAMETER
- Ⓓ HOSE ASSY 04  
CAP END - MUST MAINTAIN EQUAL LENGTH  
AND DIAMETER
- Ⓔ AP24632 HOSE ASSY 02 x 48" HWH HP  
ROD END - ALWAYS PRESSURIZED - MUST  
BE HIGH PRESSURE HOSES OF EQUAL  
LENGTH AND DIAMETER
- Ⓕ AP24636 HOSE ASSY 02 x 84" HWH HP  
CAP END - MUST MAINTAIN EQUAL LENGTH  
AND DIAMETER
- Ⓖ HOSE ASSY 04  
CAP END (LIFT)
- Ⓗ HOSE ASSY 03  
CAP END (ROOM)
- Ⓙ HOSE ASSY 03  
CAP END (ROOM)
- Ⓚ HOSE ASSY 03  
ROD END (LIFT) - ALWAYS PRESSURIZED
- Ⓛ HOSE ASSY 03  
CAP END (LIFT)
- Ⓜ HOSE ASSY 03  
ROD END (LIFT) - ALWAYS PRESSURIZED
- Ⓝ HOSE ASSY 04  
CAP END (LIFT)
- Ⓟ HOSE ASSY 03  
CAP END LIFT
- Ⓠ STEEL TUBE  
CAP END (LIFT)



NOTE: INSTALLATION MUST CONFORM TO GOOD SHOP PRACTICES, SAE STANDARDS, RVIA STANDARDS, AND OTHER APPLICABLE STANDARDS.

MP71061 B/C  
06FEB17

