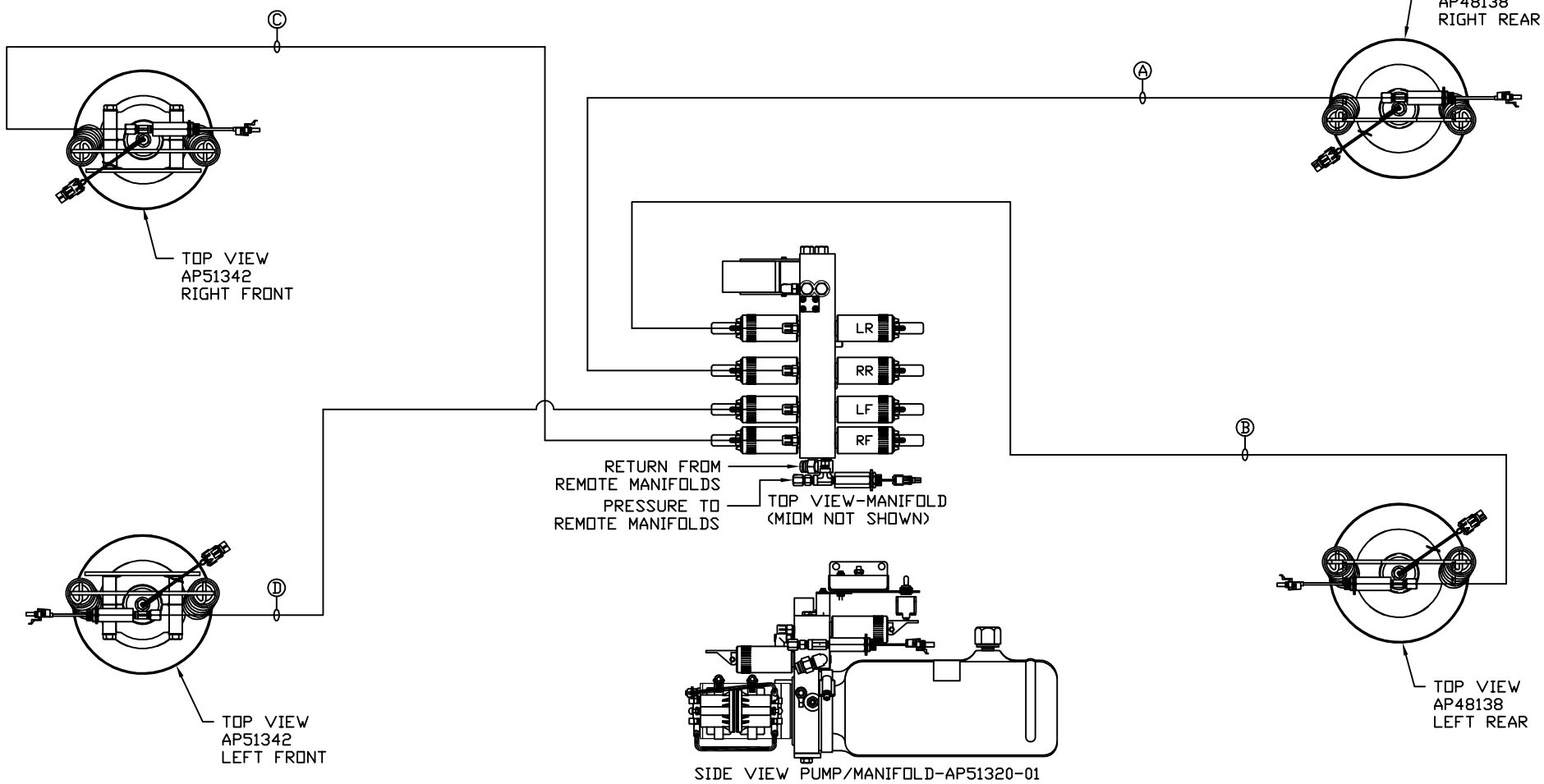


ORIENTATION
← FRONT



- ① AP2464 HOSE ASSY 04 x 324"
- ② AP6216 HOSE ASSY 04 x 264"
- ③ AP7385 HOSE ASSY 04 x 252"
- ④ AP4310 HOSE ASSY 04 x 204"

NOTE: CROSS TIES REQUIRED FOR FRONT AND REAR JACKS

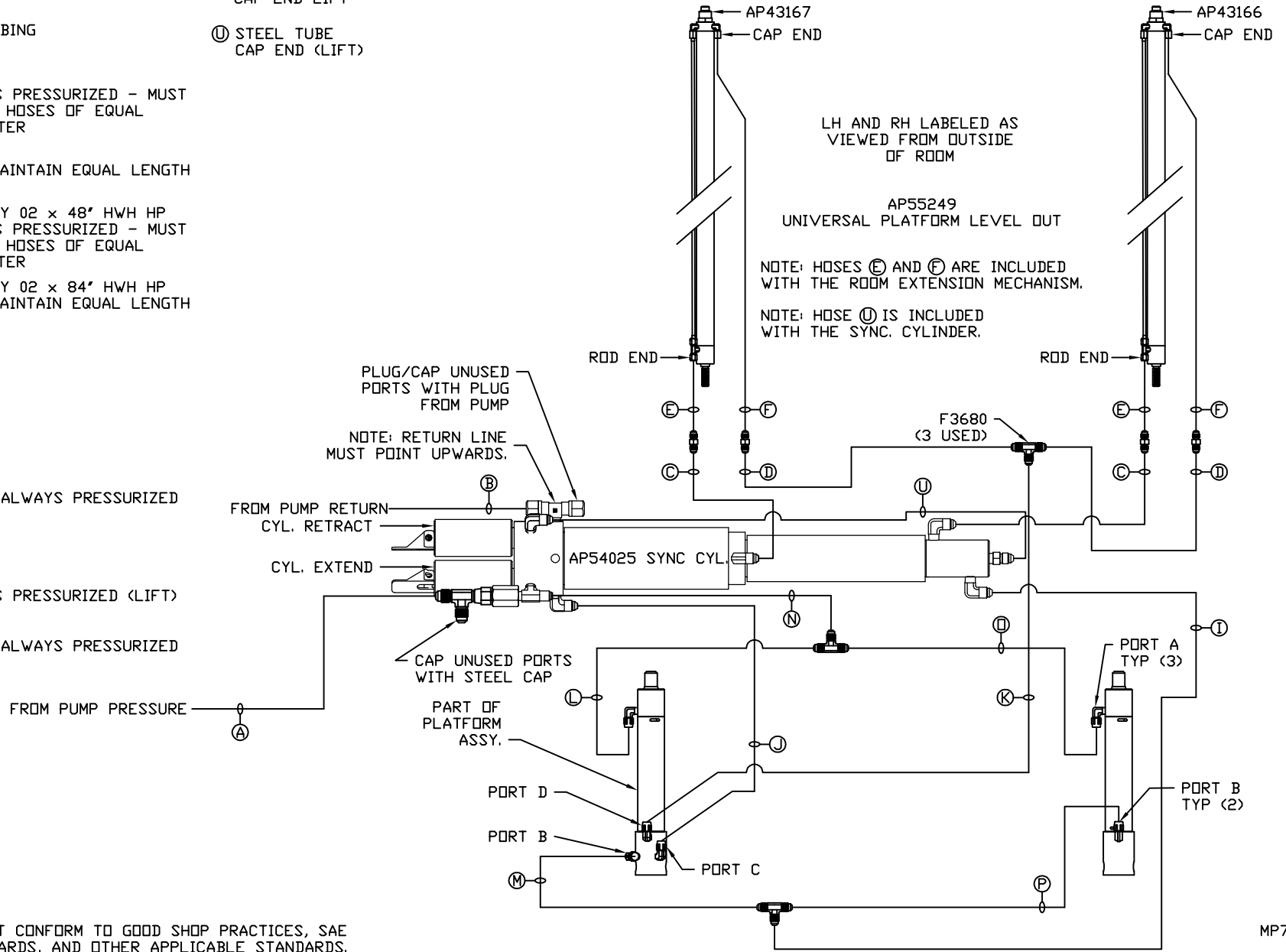
NOTE: INSTALLATION MUST CONFORM TO GOOD SHOP PRACTICES, SAE STANDARDS, RVIA STANDARDS, AND OTHER APPLICABLE STANDARDS.

LEVELING SYSTEM: AP57356

		HWH I-80 EXIT 267 SOUTH RT 1 MOSCOW, IDWA 52760	
SCALE 1:6	DATE 19JAN17	DRAWN BY .	
HYD CONN DIAGRAM			
NO.	DATE	REVISION	
THE INFORMATION DISCLOSED ON THIS DRAWING IS CONFIDENTIAL AND MUST NOT BE DISCLOSED OR USED IN ANY MANNER WHICH WILL BE DETRIMENTAL TO THE HWH CORPORATION			
ROLLING STAR		DRAWING NUMBER MP71047 A/B	

- Ⓐ HOSE ASSY 04
PRESSURE
- Ⓑ .375" OD NYLON TUBING
RETURN
- Ⓒ HOSE ASSY 03
ROD END - ALWAYS PRESSURIZED - MUST
BE HIGH PRESSURE HOSES OF EQUAL
LENGTH AND DIAMETER
- Ⓓ HOSE ASSY 04
CAP END - MUST MAINTAIN EQUAL LENGTH
AND DIAMETER
- Ⓔ AP24632 HOSE ASSY 02 x 48" HWH HP
ROD END - ALWAYS PRESSURIZED - MUST
BE HIGH PRESSURE HOSES OF EQUAL
LENGTH AND DIAMETER
- Ⓕ AP24636 HOSE ASSY 02 x 84" HWH HP
CAP END - MUST MAINTAIN EQUAL LENGTH
AND DIAMETER
- Ⓖ HOSE ASSY 04
CAP END (LIFT)
- Ⓙ HOSE ASSY 03
CAP END (ROOM)
- Ⓚ HOSE ASSY 03
CAP END (ROOM)
- Ⓛ HOSE ASSY 03
ROD END (LIFT) - ALWAYS PRESSURIZED
- Ⓜ HOSE ASSY 03
CAP END (LIFT)
- Ⓝ HOSE ASSY 04
ROD END - ALWAYS PRESSURIZED (LIFT)
- Ⓟ HOSE ASSY 03
ROD END (LIFT) - ALWAYS PRESSURIZED

- Ⓟ HOSE ASSY 03
CAP END LIFT
- Ⓛ STEEL TUBE
CAP END (LIFT)



NOTE: INSTALLATION MUST CONFORM TO GOOD SHOP PRACTICES, SAE STANDARDS, RVIA STANDARDS, AND OTHER APPLICABLE STANDARDS.

MP71047 B/B
19JAN17