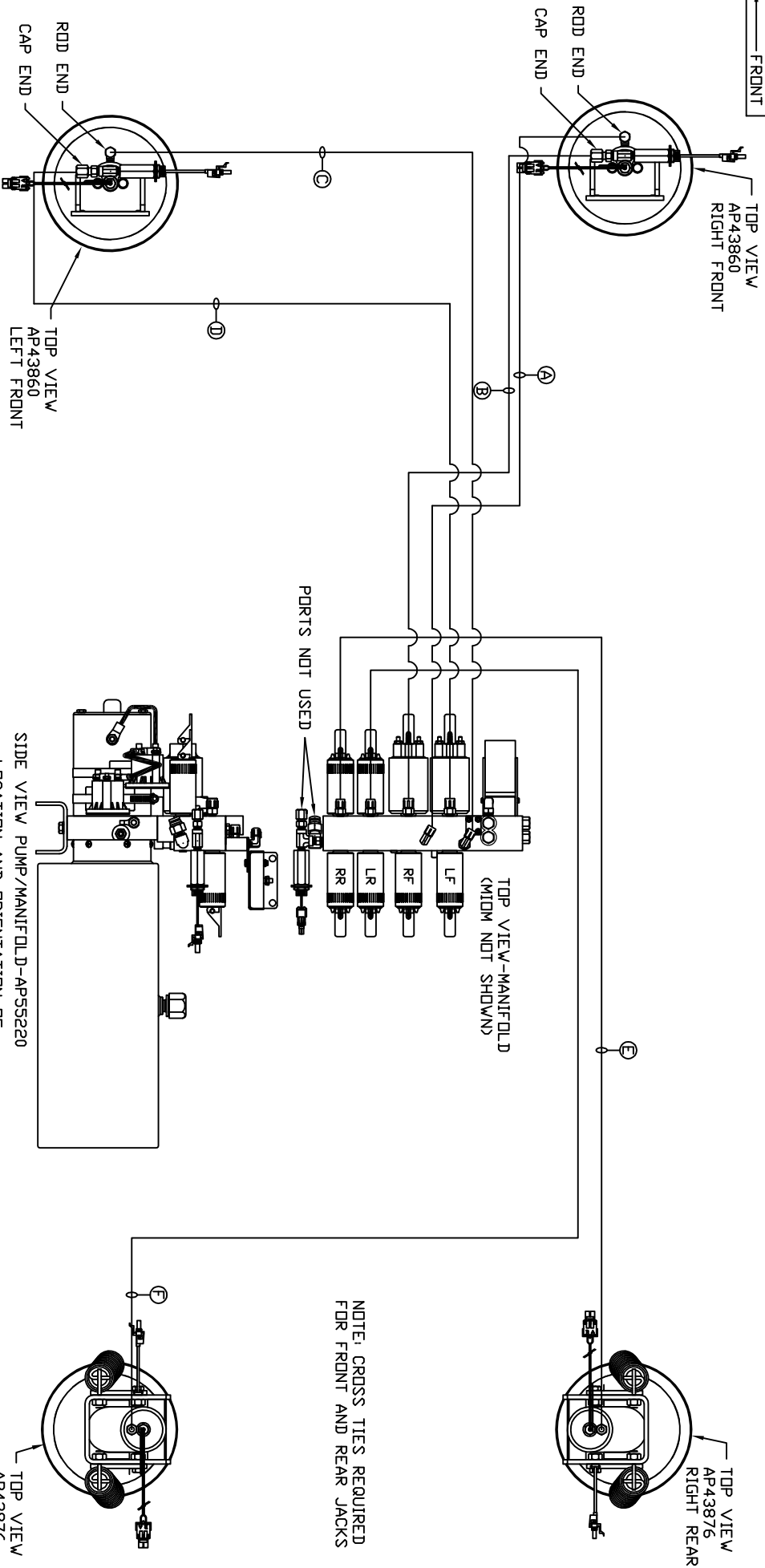


ORIENTATION
FRONT



- Ⓐ AP6115 HOSE ASSY 04 X 168' - RF RD END
- Ⓑ AP2323 HOSE ASSY 05 X 168' - RF CAP END
- Ⓒ AP4161 HOSE ASSY 04 X 120' - LF RD END
- Ⓓ AP7818 HOSE ASSY 05 X 120' - RF CAP END
- Ⓔ AP4164 HOSE ASSY 04 X 384' - RR CAP END
- Ⓕ AP5561 HOSE ASSY 04 X 336' - LR CAP END

NOTE: INSTALLATION MUST CONFORM TO GOOD SHOP PRACTICES, SAE STANDARDS, RVIA STANDARDS, AND OTHER APPLICABLE STANDARDS.

LEVELING SYSTEM: AP57141

SIDE VIEW PUMP/MANIFOLD-AP55220
LOCATION AND ORIENTATION OF PUMP/MANIFOLD ASSEMBLY WILL DIFFER DEPENDING UPON O.E.M.

NO.	DATE	REVISION

NOTE: CROSS TIES REQUIRED FOR FRONT AND REAR JACKS

HWH 1-80 EXIT 267 SOUTH
RT 1 MOSCOW, IOWA 52760

SCALE 1:6 DATE 28OCT16 DRAWN BY .

HYD CONN DIAGRAM

ROLLINGSTAR DRAWING NUMBER MP71028