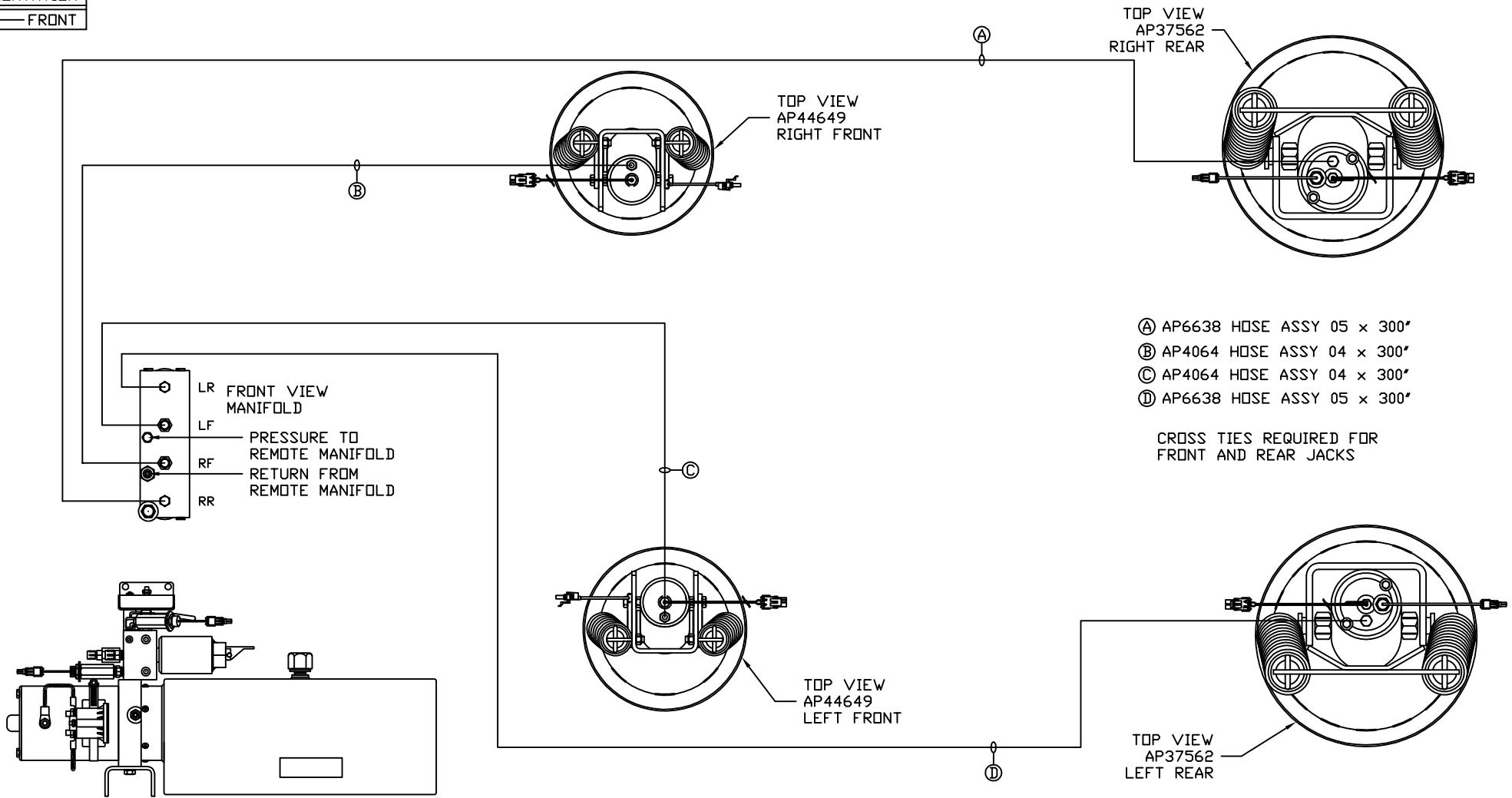
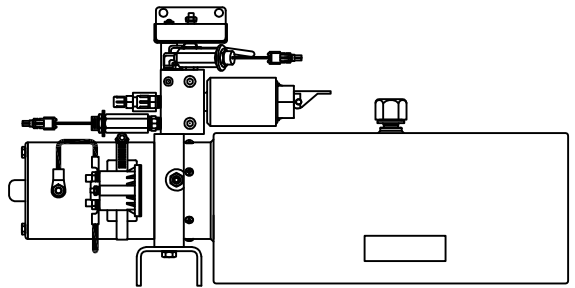


ORIENTATION
← FRONT



- Ⓐ AP6638 HOSE ASSY 05 x 300'
- Ⓑ AP4064 HOSE ASSY 04 x 300'
- Ⓒ AP4064 HOSE ASSY 04 x 300'
- Ⓓ AP6638 HOSE ASSY 05 x 300'

CROSS TIES REQUIRED FOR FRONT AND REAR JACKS



SIDE VIEW PUMP/MANIFOLD-AP53196

LOCATION AND ORIENTATION OF PUMP/MANIFOLD ASSEMBLY WILL DIFFER DEPENDING UPON O.E.M.

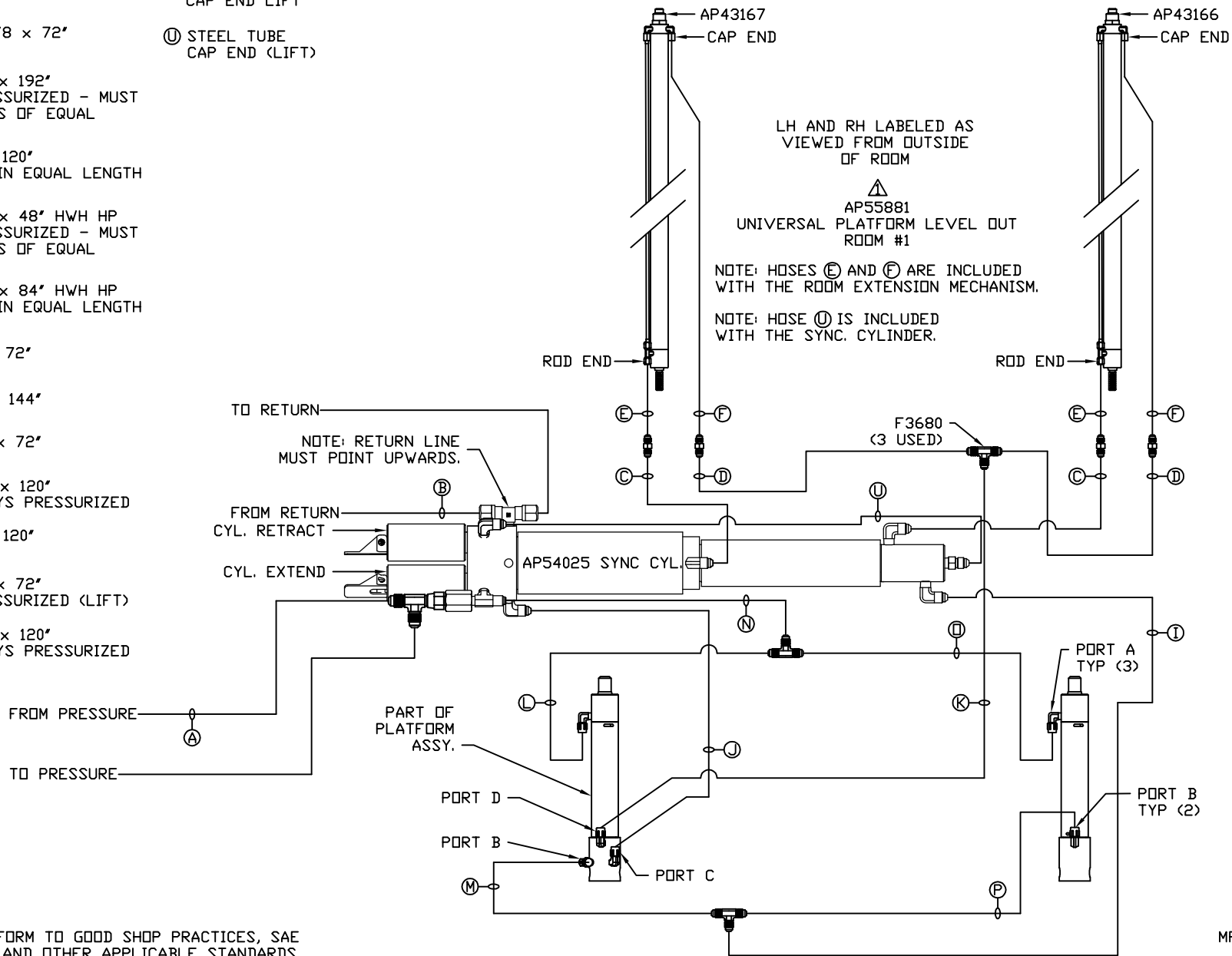
		HWH		I-80 EXIT 267 SOUTH RT 1 MOSCOW, IOWA 52760							
		SCALE 1:6	DATE 10JUN16	DRAWN BY .							
		HYD CONN DIAGRAM									
		MATTHEWS		DRAWING NUMBER MP71006 A/C							
		<table border="1" style="width: 100%; border-collapse: collapse;"> <thead> <tr> <th style="width: 10%;">NO.</th> <th style="width: 15%;">DATE</th> <th style="width: 75%;">REVISION</th> </tr> </thead> <tbody> <tr> <td style="text-align: center;">▲</td> <td style="text-align: center;">19AUG16</td> <td style="text-align: center;">CORRECTED KIT NO.</td> </tr> </tbody> </table>				NO.	DATE	REVISION	▲	19AUG16	CORRECTED KIT NO.
NO.	DATE	REVISION									
▲	19AUG16	CORRECTED KIT NO.									
<p>NOTE: INSTALLATION MUST CONFORM TO GOOD SHOP PRACTICES, SAE STANDARDS, RVIA STANDARDS, AND OTHER APPLICABLE STANDARDS. LEVELING SYSTEM: AP56728</p> <p>THE INFORMATION DISCLOSED ON THIS DRAWING IS CONFIDENTIAL AND MUST NOT BE DISCLOSED OR USED IN ANY MANNER WHICH WILL BE DETRIMENTAL TO THE HWH CORPORATION</p>											

NOTE: INSTALLATION MUST CONFORM TO GOOD SHOP PRACTICES, SAE STANDARDS, RVIA STANDARDS, AND OTHER APPLICABLE STANDARDS. LEVELING SYSTEM: AP56728

- Ⓐ AP4159 HOSE ASSY 04 x 72' PRESSURE
- Ⓑ P55310 TUBING NYLON 3/8 x 72' RETURN
- Ⓒ AP49438 HOSE ASSY 03 x 192' ROD END - ALWAYS PRESSURIZED - MUST BE HIGH PRESSURE HOSES OF EQUAL LENGTH AND DIAMETER
- Ⓓ AP4161 HOSE ASSY 04 x 120' CAP END - MUST MAINTAIN EQUAL LENGTH AND DIAMETER
- Ⓔ AP24632 HOSE ASSY 02 x 48' HWH HP ROD END - ALWAYS PRESSURIZED - MUST BE HIGH PRESSURE HOSES OF EQUAL LENGTH AND DIAMETER
- Ⓕ AP24636 HOSE ASSY 02 x 84' HWH HP CAP END - MUST MAINTAIN EQUAL LENGTH AND DIAMETER
- Ⓖ AP4159 HOSE ASSY 04 x 72' CAP END (LIFT)
- Ⓙ AP4827 HOSE ASSY 04 x 144' CAP END (ROOM)
- Ⓚ AP50909 HOSE ASSY 03 x 72' CAP END (ROOM)
- Ⓛ AP49245 HOSE ASSY 03 x 120' ROD END (LIFT) - ALWAYS PRESSURIZED
- Ⓜ AP4161 HOSE ASSY 04 x 120' CAP END (LIFT)
- Ⓝ AP50909 HOSE ASSY 03 x 72' ROD END - ALWAYS PRESSURIZED (LIFT)
- Ⓟ AP49245 HOSE ASSY 03 x 120' ROD END (LIFT) - ALWAYS PRESSURIZED

- Ⓟ AP4161 HOSE ASSY 04 x 120' CAP END LIFT
- Ⓡ STEEL TUBE CAP END (LIFT)

AP56705 HOSE KIT ROOM 1



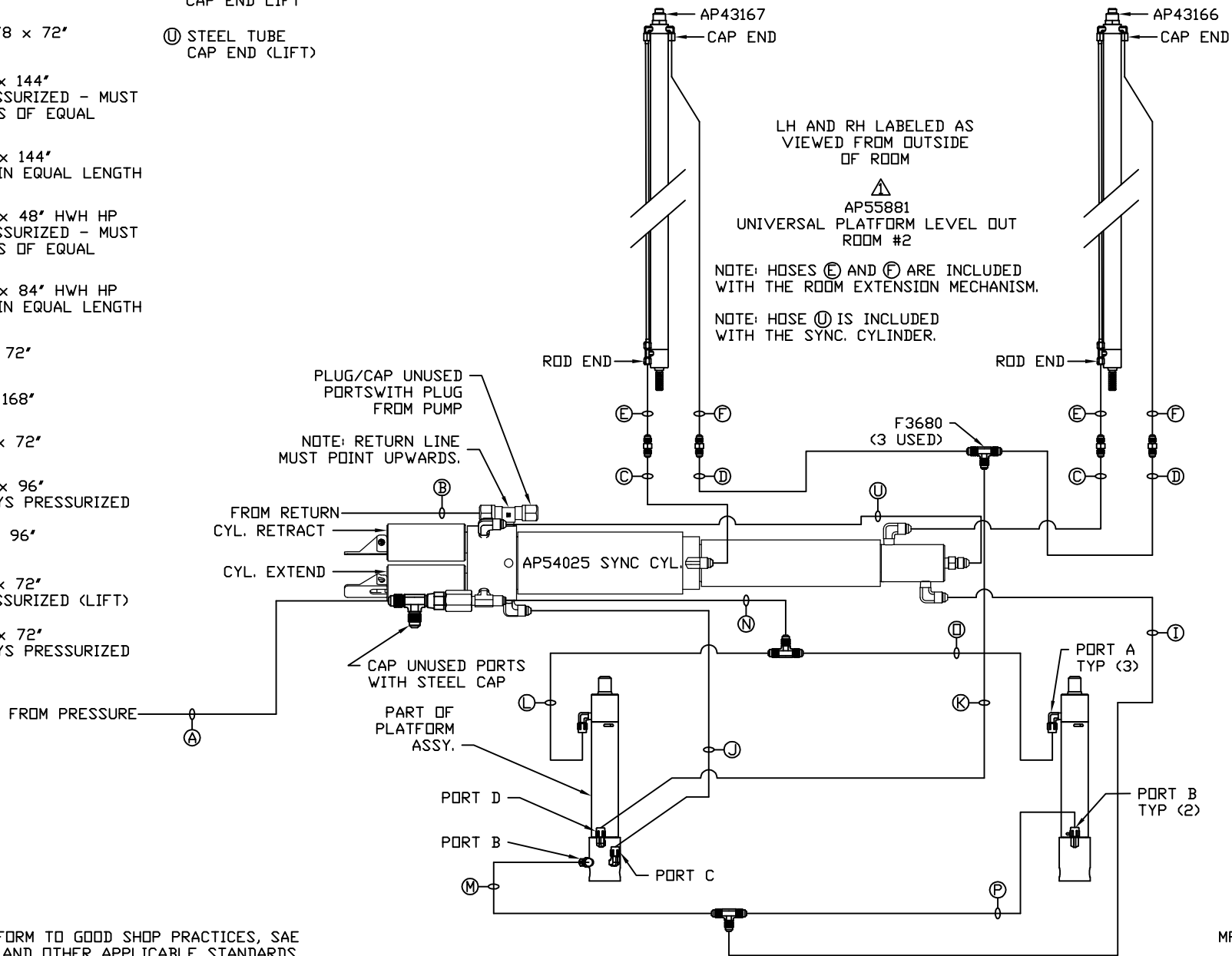
NOTE: INSTALLATION MUST CONFORM TO GOOD SHOP PRACTICES, SAE STANDARDS, RVIA STANDARDS, AND OTHER APPLICABLE STANDARDS.

MP71006 B/C
19AUG16

- (A) AP4159 HOSE ASSY 04 x 72' PRESSURE
- (B) P55310 TUBING NYLON 3/8 x 72' RETURN
- (C) AP50779 HOSE ASSY 03 x 144' ROD END - ALWAYS PRESSURIZED - MUST BE HIGH PRESSURE HOSES OF EQUAL LENGTH AND DIAMETER
- (D) AP49245 HOSE ASSY 04 x 144' CAP END - MUST MAINTAIN EQUAL LENGTH AND DIAMETER
- (E) AP24632 HOSE ASSY 02 x 48' HWH HP ROD END - ALWAYS PRESSURIZED - MUST BE HIGH PRESSURE HOSES OF EQUAL LENGTH AND DIAMETER
- (F) AP24636 HOSE ASSY 02 x 84' HWH HP CAP END - MUST MAINTAIN EQUAL LENGTH AND DIAMETER
- (I) AP4159 HOSE ASSY 04 x 72' CAP END (LIFT)
- (J) AP6115 HOSE ASSY 04 x 168' CAP END (ROOM)
- (K) AP50909 HOSE ASSY 03 x 72' CAP END (ROOM)
- (L) AP50766 HOSE ASSY 03 x 96' ROD END (LIFT) - ALWAYS PRESSURIZED
- (M) AP5352 HOSE ASSY 04 x 96' CAP END (LIFT)
- (N) AP50909 HOSE ASSY 03 x 72' ROD END - ALWAYS PRESSURIZED (LIFT)
- (O) AP50909 HOSE ASSY 03 x 72' ROD END (LIFT) - ALWAYS PRESSURIZED

- (P) AP5352 HOSE ASSY 04 x 96' CAP END LIFT
- (U) STEEL TUBE CAP END (LIFT)

AP56706 HOSE KIT ROOM 2



NOTE: INSTALLATION MUST CONFORM TO GOOD SHOP PRACTICES, SAE STANDARDS, RVIA STANDARDS, AND OTHER APPLICABLE STANDARDS.

MP71006 C/C
19AUG16