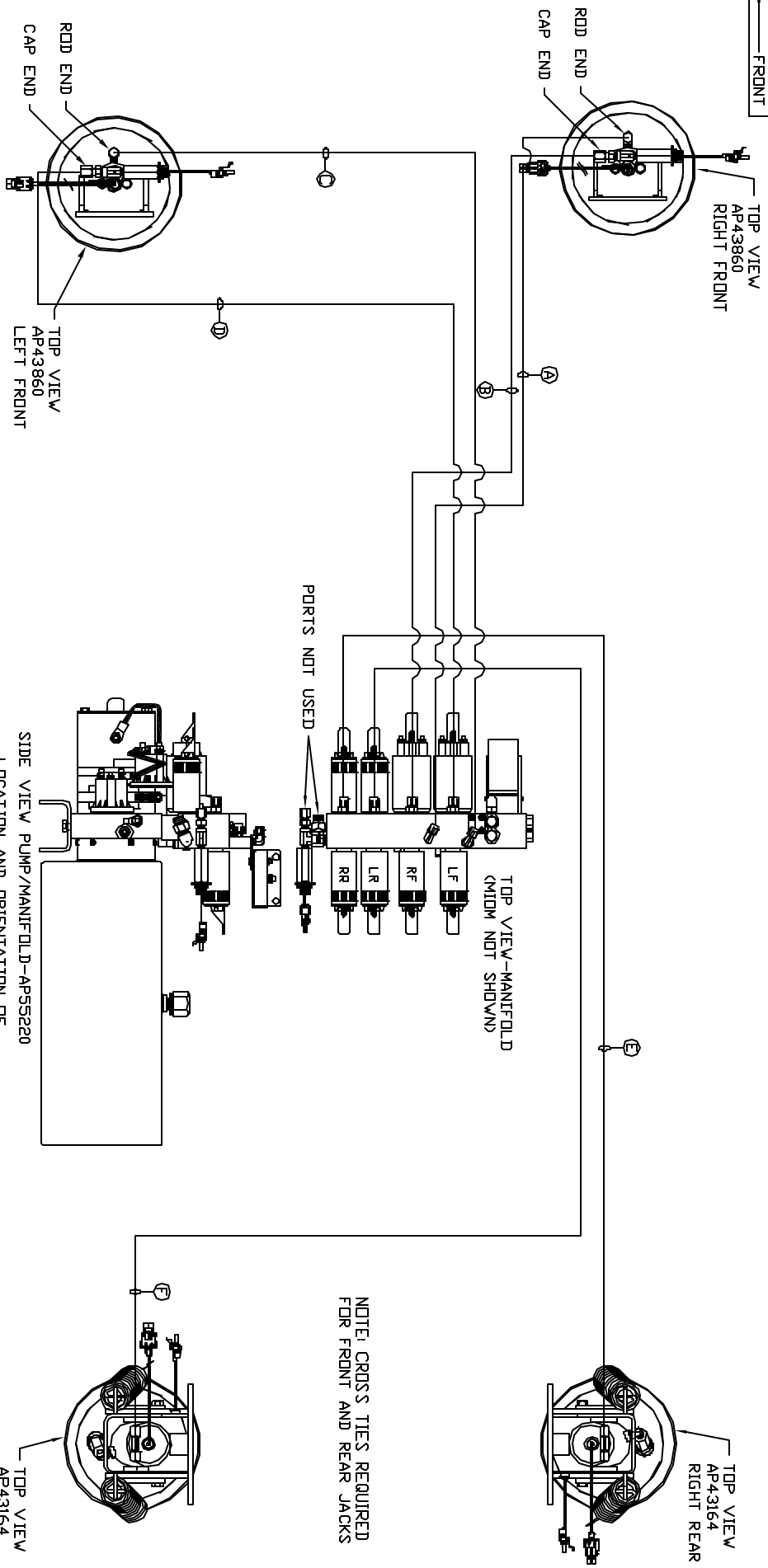


ORIENTATION
FRONT



- Ⓐ AP4669 HOSE ASSY 04 X 408' - RF ROD END
- Ⓑ AP15835 HOSE ASSY 05 X 408' - RF CAP END
- Ⓒ AP6217 HOSE ASSY 04 X 456' - LF ROD END
- Ⓓ AP25653 HOSE ASSY 05 X 456' - RF CAP END
- Ⓔ AP4161 HOSE ASSY 04 X 120' - RR CAP END
- Ⓕ AP6115 HOSE ASSY 04 X 168' - LR CAP END

NOTE: INSTALLATION MUST CONFORM TO GOOD SHOP PRACTICES, SAE STANDARDS, RVIA STANDARDS, AND OTHER APPLICABLE STANDARDS.

LEVELING SYSTEM: AP55739

NO.	DATE	REVISION

THE INFORMATION DISCLOSED IN THIS DRAWING IS CONFIDENTIAL AND MUST NOT BE DISCLOSED OR USED IN ANY MANNER WHICH WILL BE DETRIMENTAL TO THE INH CORPORATION

HW H 1-80 EXIT 267 SOUTH
RT 1 MOSCOV, IDVA 52760

SCALE 1:6 DATE 10DEC15 DRAWN BY .

HYD CONN DIAGRAM

ROLLINGSTAR

DRAWING NUMBER
MP70903

NOTE: CROSS TIES REQUIRED FOR FRONT AND REAR JACKS