

NOTE: INSTALLATION MUST CONFORM TO GOOD SHOP PRACTICES, SAE STANDARDS, RVIA STANDARDS, AND OTHER APPLICABLE STANDARDS.

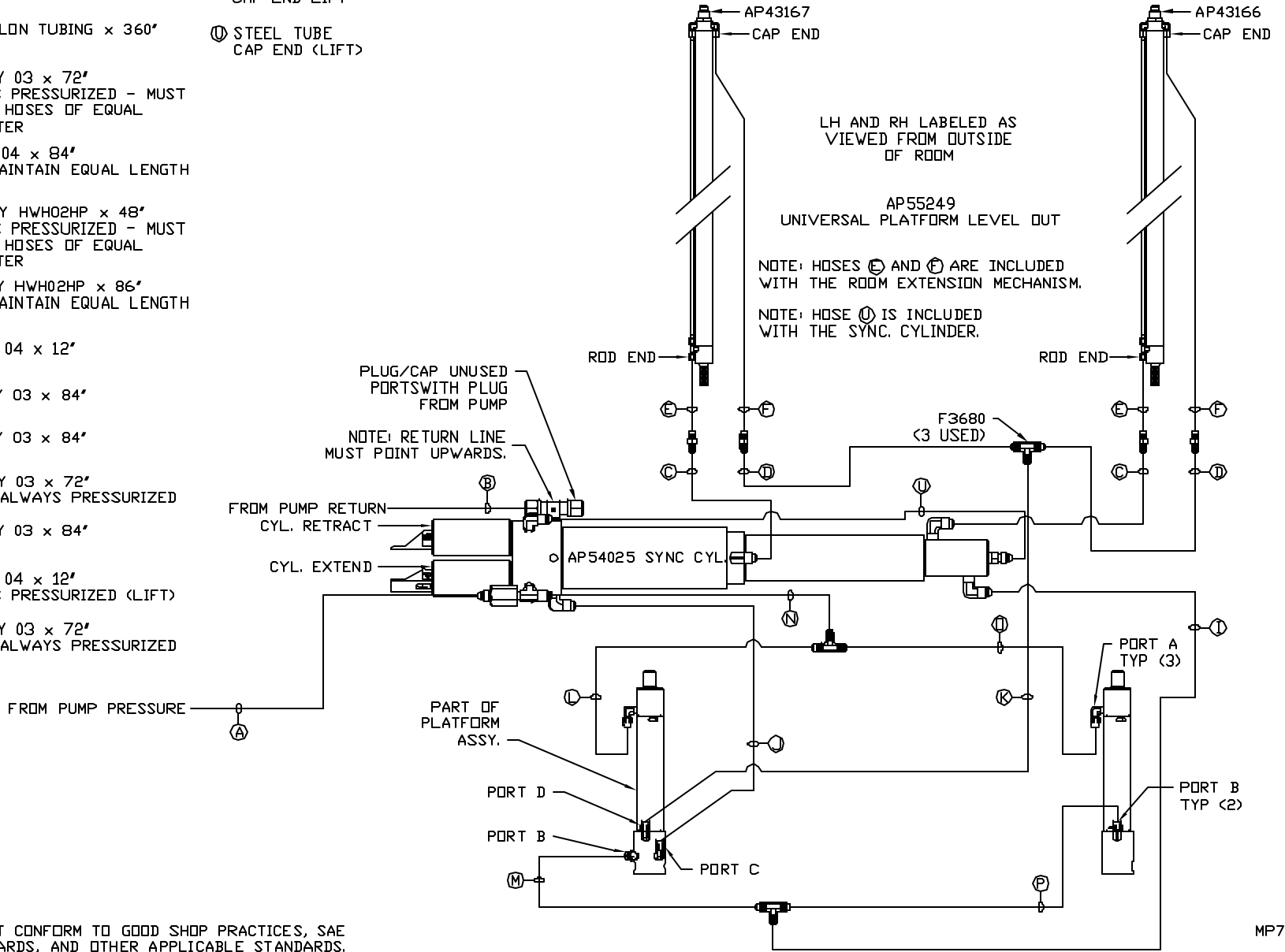
LEVELING SYSTEM: AP55220

NO.	DATE	REVISION
THE INFORMATION DISCLOSED ON THIS DRAWING IS CONFIDENTIAL AND MUST NOT BE DISCLOSED OR USED IN ANY MANNER WHICH WILL BE DETRIMENTAL TO THE HWH CORPORATION		

<b>HWH</b>		I-80 EXIT 267 SOUTH RT 1 MOSCOW, IOWA 52760	
SCALE: 1:6	DATE: 09JUN15	DRAWN BY: .	
<b>HYD CONN DIAGRAM</b>			
<b>ROLLINGSTAR</b>		DRAWING NUMBER MP70886 A/B	

- Ⓐ AP4064 HOSE ASSY 04 x 300' PRESSURE
- Ⓑ P4479 .375" OD NYLON TUBING x 360' RETURN
- Ⓒ AP50909 HOSE ASSY 03 x 72' ROD END - ALWAYS PRESSURIZED - MUST BE HIGH PRESSURE HOSES OF EQUAL LENGTH AND DIAMETER
- Ⓓ AP1412 HOSE ASSY 04 x 84' CAP END - MUST MAINTAIN EQUAL LENGTH AND DIAMETER
- Ⓔ AP24632 HOSE ASSY HWH02HP x 48' ROD END - ALWAYS PRESSURIZED - MUST BE HIGH PRESSURE HOSES OF EQUAL LENGTH AND DIAMETER
- Ⓕ AP24818 HOSE ASSY HWH02HP x 86' CAP END - MUST MAINTAIN EQUAL LENGTH AND DIAMETER
- Ⓖ AP4158 HOSE ASSY 04 x 12' CAP END (LIFT)
- Ⓗ AP50671 HOSE ASSY 03 x 84' CAP END (ROOM)
- Ⓙ AP50671 HOSE ASSY 03 x 84' CAP END (ROOM)
- Ⓛ AP50909 HOSE ASSY 03 x 72' ROD END (LIFT) - ALWAYS PRESSURIZED
- Ⓜ AP50671 HOSE ASSY 03 x 84' CAP END (LIFT)
- Ⓝ AP4158 HOSE ASSY 04 x 12' ROD END - ALWAYS PRESSURIZED (LIFT)
- Ⓟ AP50909 HOSE ASSY 03 x 72' ROD END (LIFT) - ALWAYS PRESSURIZED

- Ⓟ AP50671 HOSE ASSY 03 x 84' CAP END LIFT
- Ⓠ AP55255 HOSE KIT 1 ROOM
- Ⓡ STEEL TUBE CAP END (LIFT)



NOTE: INSTALLATION MUST CONFORM TO GOOD SHOP PRACTICES, SAE STANDARDS, RVIA STANDARDS, AND OTHER APPLICABLE STANDARDS.

MP70886 B/B  
09JUN15