

NOTE: HOSES ⑤ AND ⑥ ARE INCLUDED WITH THE ROD EXTENSION MECHANISM.

- ④ HOSE ASSY 04 PRESSURE
- ③ .375" OD NYLON TUBING RETURN

- ② HOSE ASSY 03 ROD END - ALWAYS PRESSURIZED - MUST MAINTAIN EQUAL LENGTH AND DIAMETER

- ① HOSE ASSY 04 CAP END - MUST MAINTAIN EQUAL LENGTH AND DIAMETER

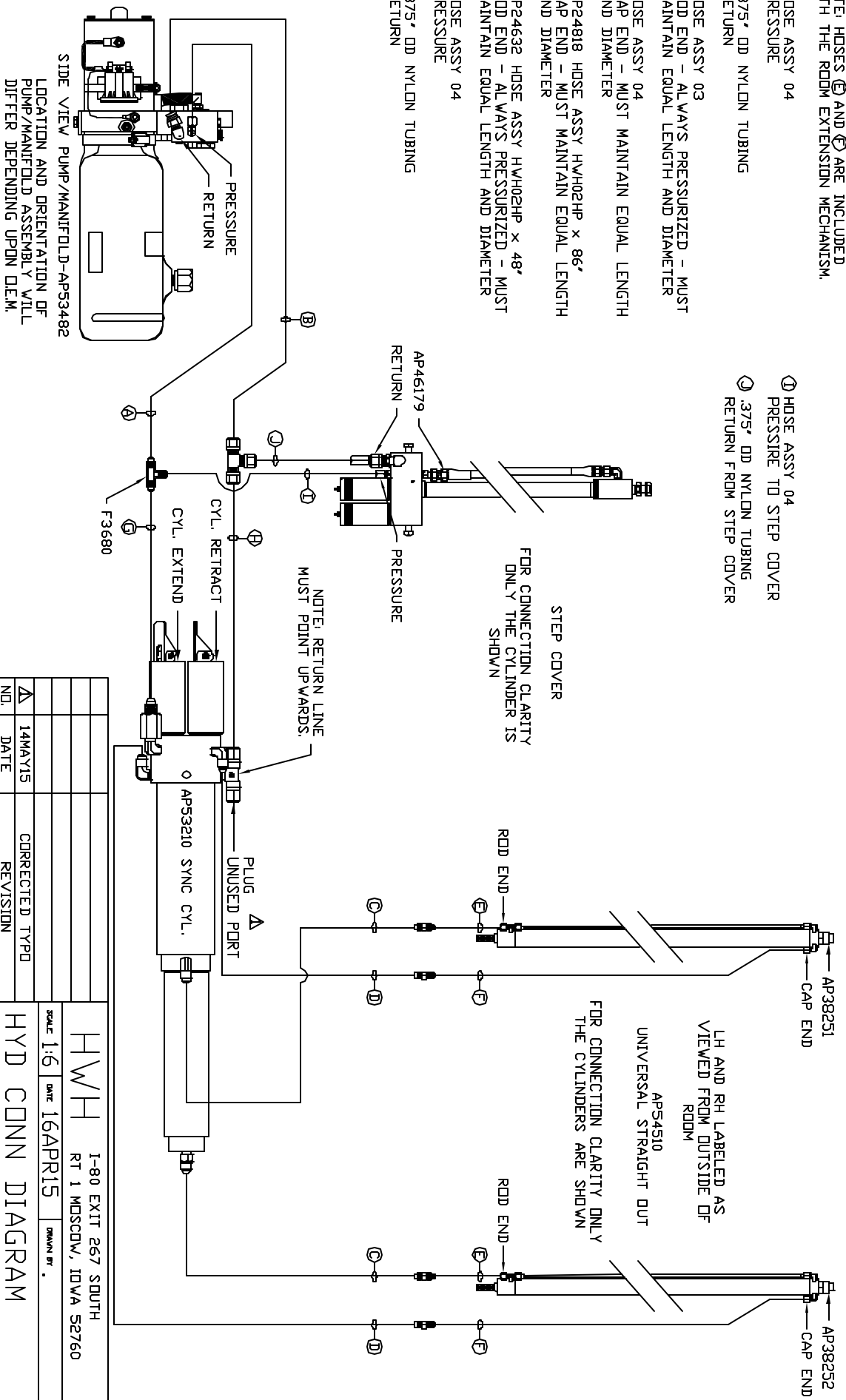
- ⑦ AP24818 HOSE ASSY HW402HP x 86' CAP END - MUST MAINTAIN EQUAL LENGTH AND DIAMETER

- ⑧ AP24632 HOSE ASSY HW402HP x 48' ROD END - ALWAYS PRESSURIZED - MUST MAINTAIN EQUAL LENGTH AND DIAMETER

- ⑨ HOSE ASSY 04 PRESSURE

- ⑩ .375" OD NYLON TUBING RETURN

- ① HOSE ASSY 04 PRESSURE TO STEP COVER
- ② .375" OD NYLON TUBING RETURN FROM STEP COVER



NOTE: INSTALLATION MUST CONFORM TO GOOD SHOP PRACTICES, SAE STANDARDS, RYLA STANDARDS, AND OTHER APPLICABLE STANDARDS.

TRUCK #2

NO.	DATE	REVISION
1	14MAY15	CORRECTED TYPO

HWH		1-80 EXIT 267 SOUTH	
RT 1 MOSCOV, IDVA 52760		DRAWN BY .	
SCALE 1:6	DATE 16APR15	DRAWING NUMBER	
HYD CONN DIAGRAM		MP70874	
KING OF THE ROAD		DRAWING NUMBER	

THE INFORMATION DISCLOSED IN THIS DRAWING IS CONFIDENTIAL AND MUST NOT BE DISCLOSED OR USED IN ANY MANNER WHICH WILL BE DETRIMENTAL TO THE IHI CORPORATION