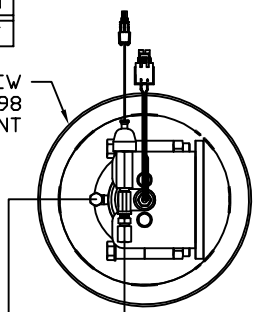


ORIENTATION
← FRONT

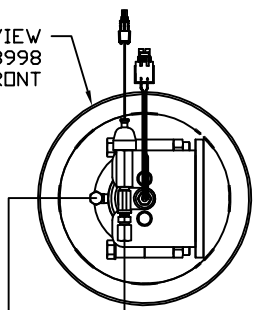
AP55021 JACK HOSE KIT

- Ⓐ AP6115 HOSE ASSY 04 x 168" ROD END RIGHT FRONT JACK
- Ⓑ AP23233 HOSE ASSY 05 x 168" CAP END RIGHT FRONT JACK
- Ⓒ AP5352 HOSE ASSY 04 x 96" ROD END LEFT FRONT JACK
- Ⓓ AP8383 HOSE ASSY 05 x 96" CAP END LEFT FRONT JACK
- Ⓔ AP5561 HOSE ASSY 04 x 336" CAP END LEFT REAR JACK
- Ⓕ AP4164 HOSE ASSY 04 x 384" CAP END RIGHT REAR JACK
- Ⓖ AP4060 HOSE ASSY 04 x 24" PRESSURE
- Ⓗ P31138 RETURN LINE .375" x 36" RETURN

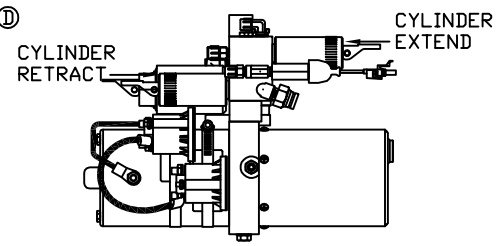
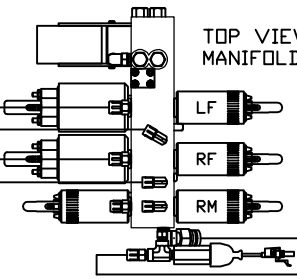
TOP VIEW AP43998 RIGHT FRONT



TOP VIEW AP43998 LEFT FRONT



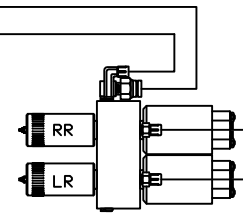
TOP VIEW MANIFOLD



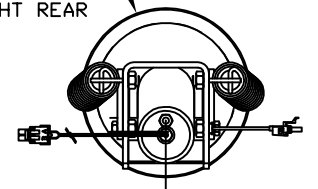
SIDE VIEW PUMP/MANIFOLD-AP46592

LOCATION AND ORIENTATION OF PUMP/MANIFOLD ASSEMBLY WILL DIFFER DEPENDING UPON O.E.M.

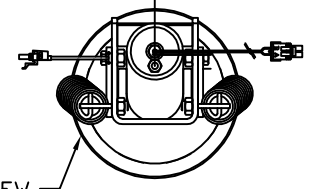
TOP VIEW MANIFOLD AP44758



TOP VIEW AP43876 RIGHT REAR



TOP VIEW AP43876 LEFT REAR



NOTE: INSTALLATION MUST CONFORM TO GOOD SHOP PRACTICES, SAE STANDARDS, RVIA STANDARDS, AND OTHER APPLICABLE STANDARDS.

LEVELING SYSTEM: AP55015

1	17MAY16	REVISED SYNC. CYL.
NO.	DATE	REVISION

HWH I-80 EXIT 267 SOUTH
RT 1 MOSCOW, IOWA 52760
SCALE 1:6 DATE 26MAY15 DRAWN BY .

HYD CONN DIAGRAM

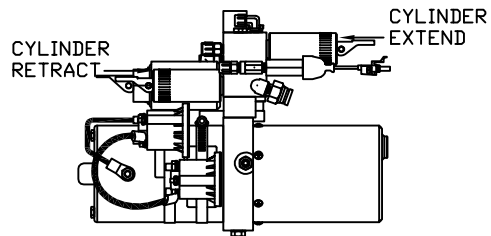
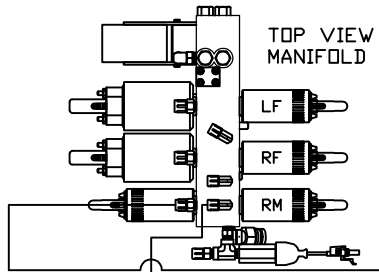
ROLLINGSTAR DRAWING NUMBER MP70864 A/B

THE INFORMATION DISCLOSED ON THIS DRAWING IS CONFIDENTIAL AND MUST NOT BE DISCLOSED OR USED IN ANY MANNER WHICH WILL BE DETRIMENTAL TO THE HWH CORPORATION

NOTE: HOSES ① AND ② ARE INCLUDED WITH THE ROOM EXTENSION MECHANISM

- Ⓐ HOSE ASSY 04
ROD END - ALWAYS PRESSURIZED
- Ⓑ HOSE ASSY 04
CAP END (ROOM)
- Ⓒ HOSE ASSY 04
ROD END - ALWAYS PRESSURIZED (LIFT)
- Ⓓ HOSE ASSY 04
CAP END (ROOM)
- Ⓔ HOSE ASSY 04
CAP END (LIFT)
- Ⓚ HOSE ASSY 04
CAP END (ROOM)

- Ⓞ HOSE ASSY 03
ROD END - ALWAYS PRESSURIZED
HOSES MUST BE HIGH PRESSURE
HOSES OF EQUAL LENGTH AND DIAMETER
- Ⓡ HOSE ASSY 04
CAP END - HOSES MUST MAINTAIN
EQUAL LENGTH AND DIAMETER
- ① AP24632 HOSE ASSY HWH02HP x 48'
ROD END - ALWAYS PRESSURIZED -
MUST BE HIGH PRESSURE HOSES OF
EQUAL LENGTH AND DIAMETER
- ② AP24818 HOSE ASSY HWH02HP x 86'
CAP END - MUST MAINTAIN EQUAL
LENGTH AND DIAMETER
- Ⓛ HOSE ASSY 04 CAP END (LIFT)
MUST MAINTAIN EQUAL LENGTH
AND DIAMETER
- Ⓜ HOSE ASSY 04 ROD END (LIFT)
ALWAYS PRESSURIZED - MUST MAINTAIN
EQUAL LENGTH AND DIAMETER

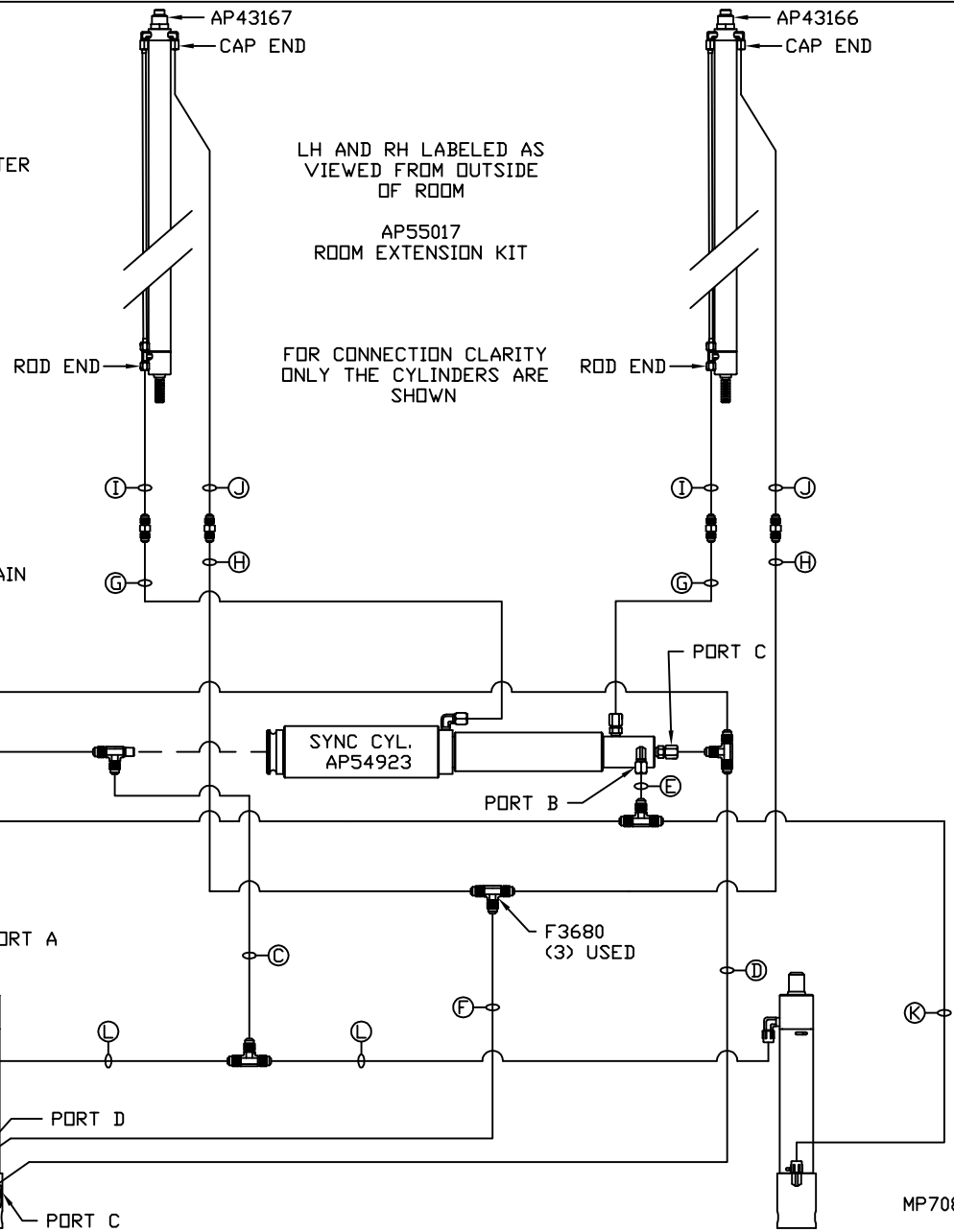


LOCATION AND ORIENTATION OF
PUMP/MANIFOLD ASSEMBLY WILL
DIFFER DEPENDING UPON O.E.M.

CYL ASSY
(PART OF AP47850
PLATFORM ASSY.)

NOTE: GENERIC VIEWS FOR CLARITY. CYLINDERS MAY BE REVERSED

NOTE: INSTALLATION MUST CONFORM TO GOOD SHOP PRACTICES, SAE
STANDARDS, RVIA STANDARDS, AND OTHER APPLICABLE STANDARDS.



MP70864 B/B
17MAY16