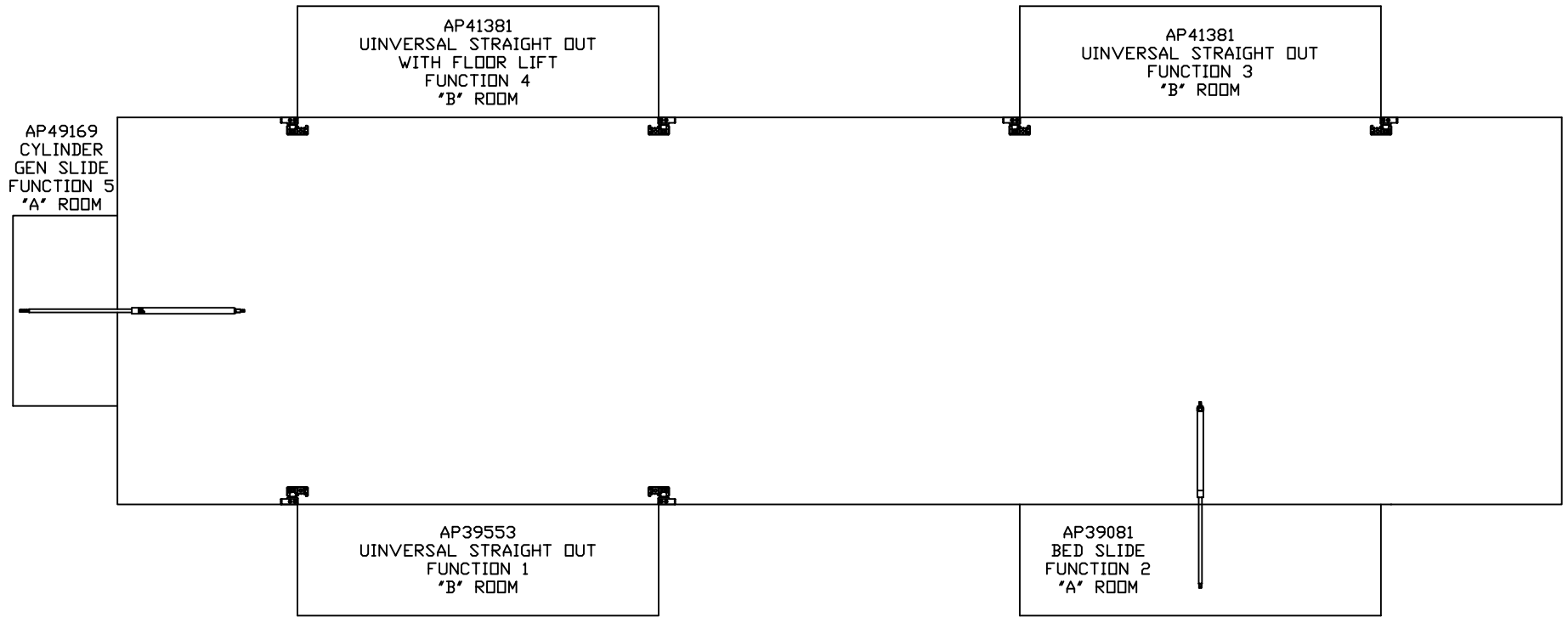


ORIENTATION
← FRONT

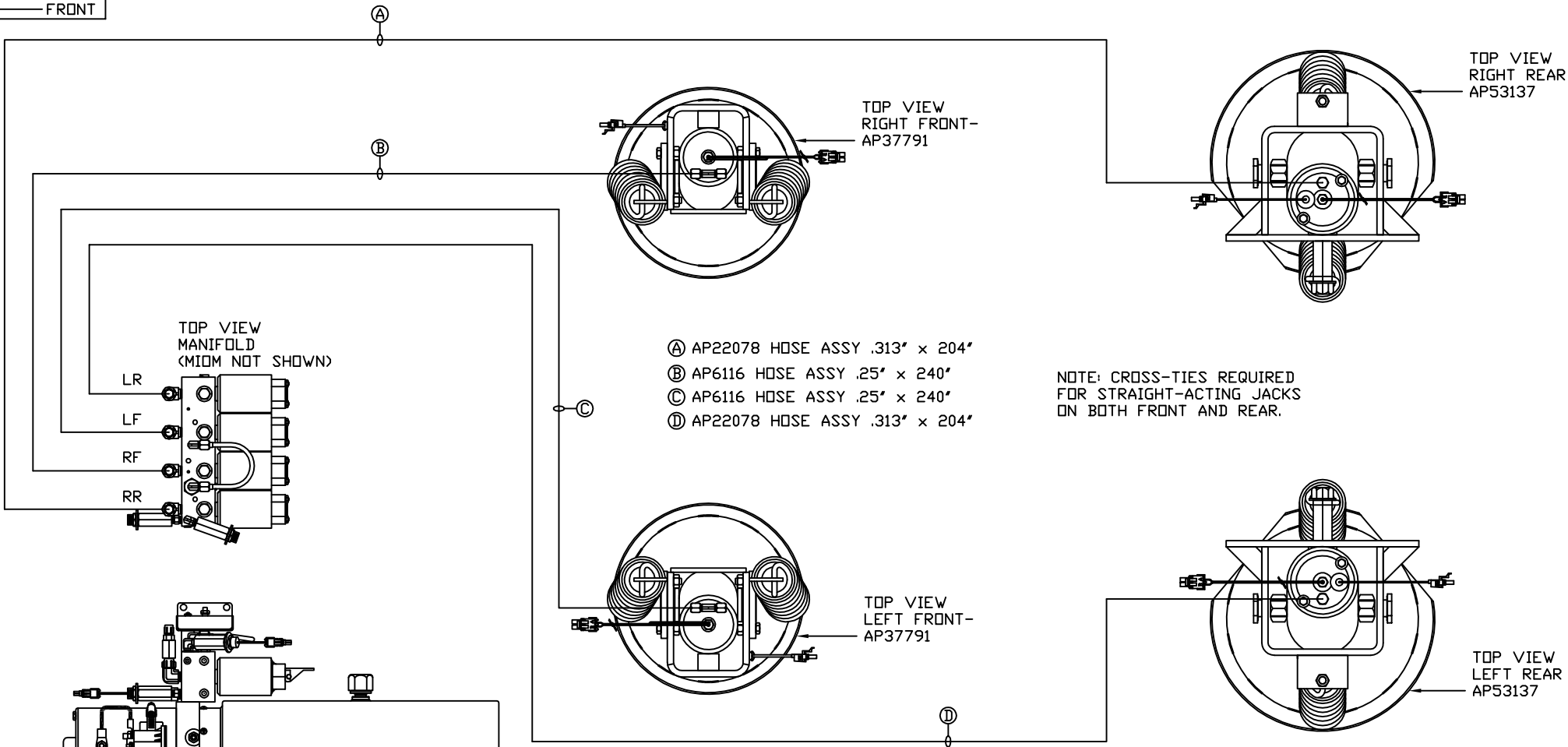


NOTE: INSTALLATION MUST CONFORM TO GOOD SHOP PRACTICES, SAE STANDARDS, RVIA STANDARDS, AND OTHER APPLICABLE STANDARDS.

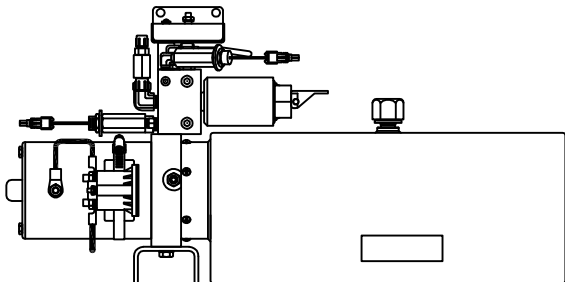
LEVELING SYSTEM: AP54143

		HWH		I-80 EXIT 267 SOUTH RT 1 MOSCOW, IDWA 52760	
		SCALE 1:6	DATE 22AUG14	DRAWN BY .	
△	22FEB16	UPDATED HOSE			
△	14MAY15	CORRECTED CAP/ROD,TYPD			
NO.	DATE	REVISION			
THE INFORMATION DISCLOSED ON THIS DRAWING IS CONFIDENTIAL AND MUST NOT BE DISCLOSED OR USED IN ANY MANNER WHICH WILL BE DETRIMENTAL TO THE HWH CORPORATION					
HYD CONN DIAGRAM				DRAWING NUMBER MP70822 A/F	
FORETRAVEL					

ORIENTATION
 ← FRONT

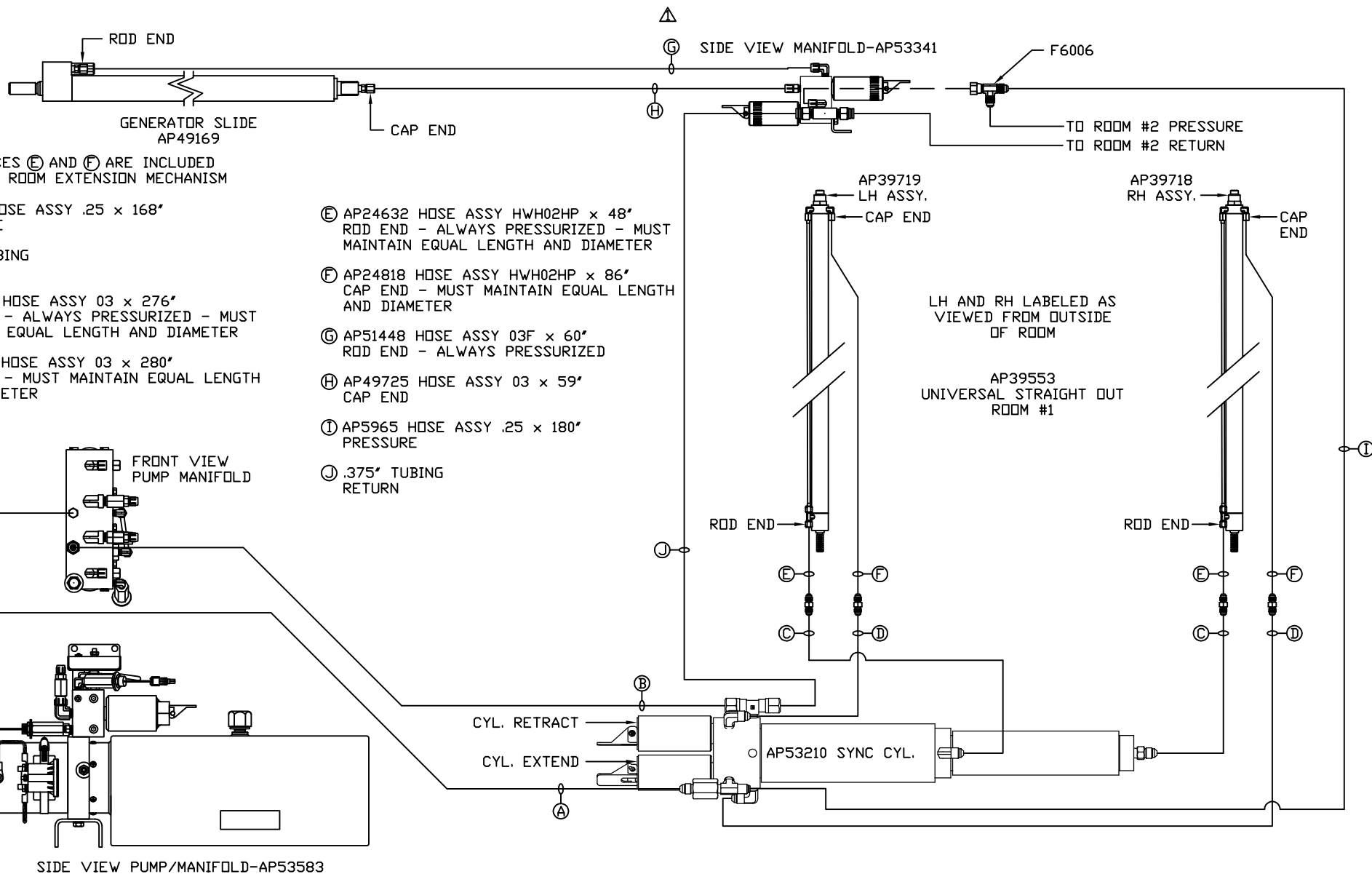


NOTE: CROSS-TIES REQUIRED FOR STRAIGHT-ACTING JACKS ON BOTH FRONT AND REAR.



NOTE: INSTALLATION MUST CONFORM TO GOOD SHOP PRACTICES, SAE STANDARDS, RVIA STANDARDS, AND OTHER APPLICABLE STANDARDS.

MP70822 B/F
 22AUG14

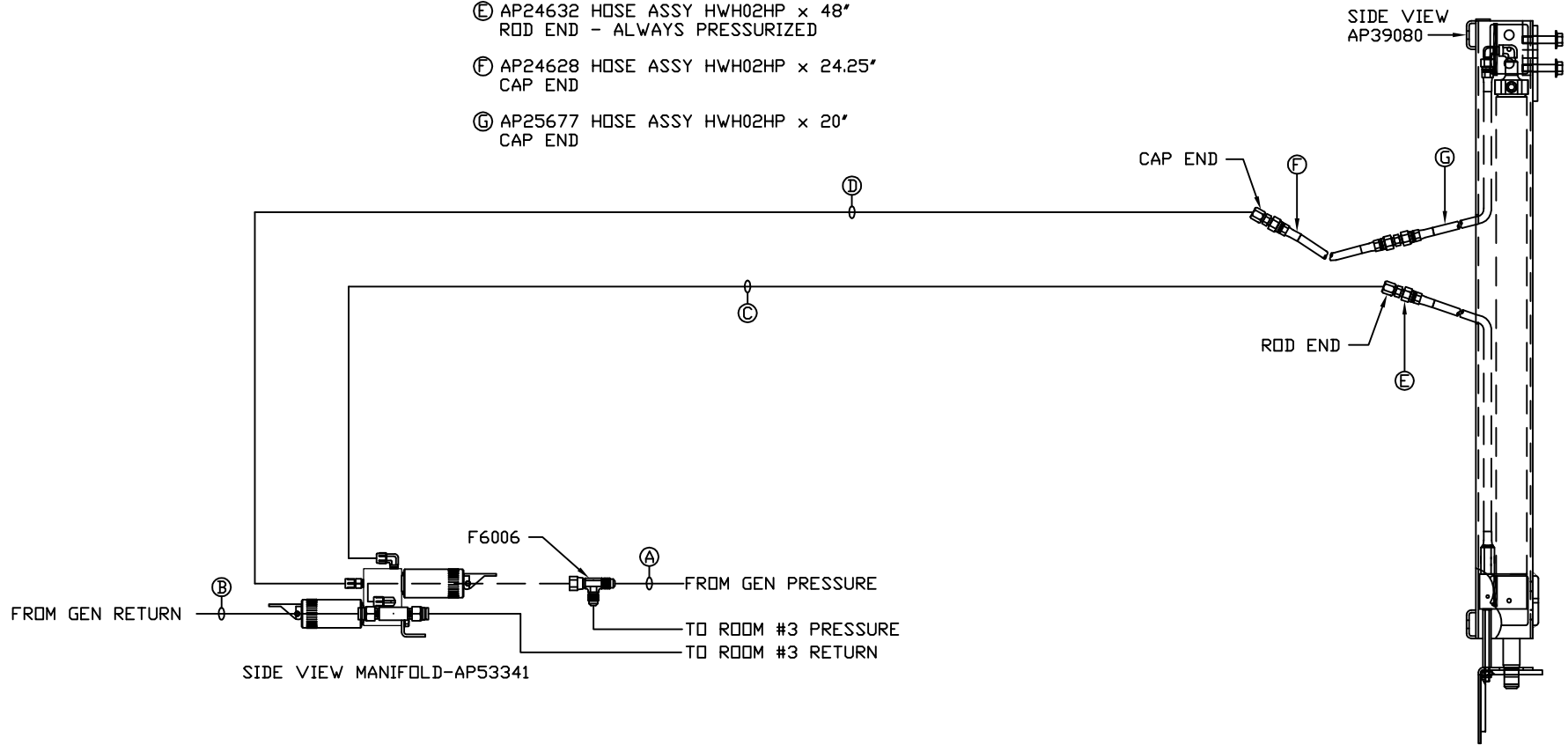


NOTE: INSTALLATION MUST CONFORM TO GOOD SHOP PRACTICES, SAE STANDARDS, RVIA STANDARDS, AND OTHER APPLICABLE STANDARDS.

MP70822 C/F
14MAY15

NOTE: HOSES (E), (F) AND (G) ARE INCLUDED WITH THE ROOM EXTENSION MECHANISM

- (A) HOSE ASSY .25 PRESSURE
- (B) .375" TUBING RETURN
- (C) AP50907 HOSE ASSY 03F x 48" ROD END - ALWAYS PRESSURIZED
- (D) AP49724 HOSE ASSY 03 x 51" CAP END
- (E) AP24632 HOSE ASSY HWH02HP x 48" ROD END - ALWAYS PRESSURIZED
- (F) AP24628 HOSE ASSY HWH02HP x 24.25" CAP END
- (G) AP25677 HOSE ASSY HWH02HP x 20" CAP END



NOTE: INSTALLATION MUST CONFORM TO GOOD SHOP PRACTICES, SAE STANDARDS, RVIA STANDARDS, AND OTHER APPLICABLE STANDARDS.

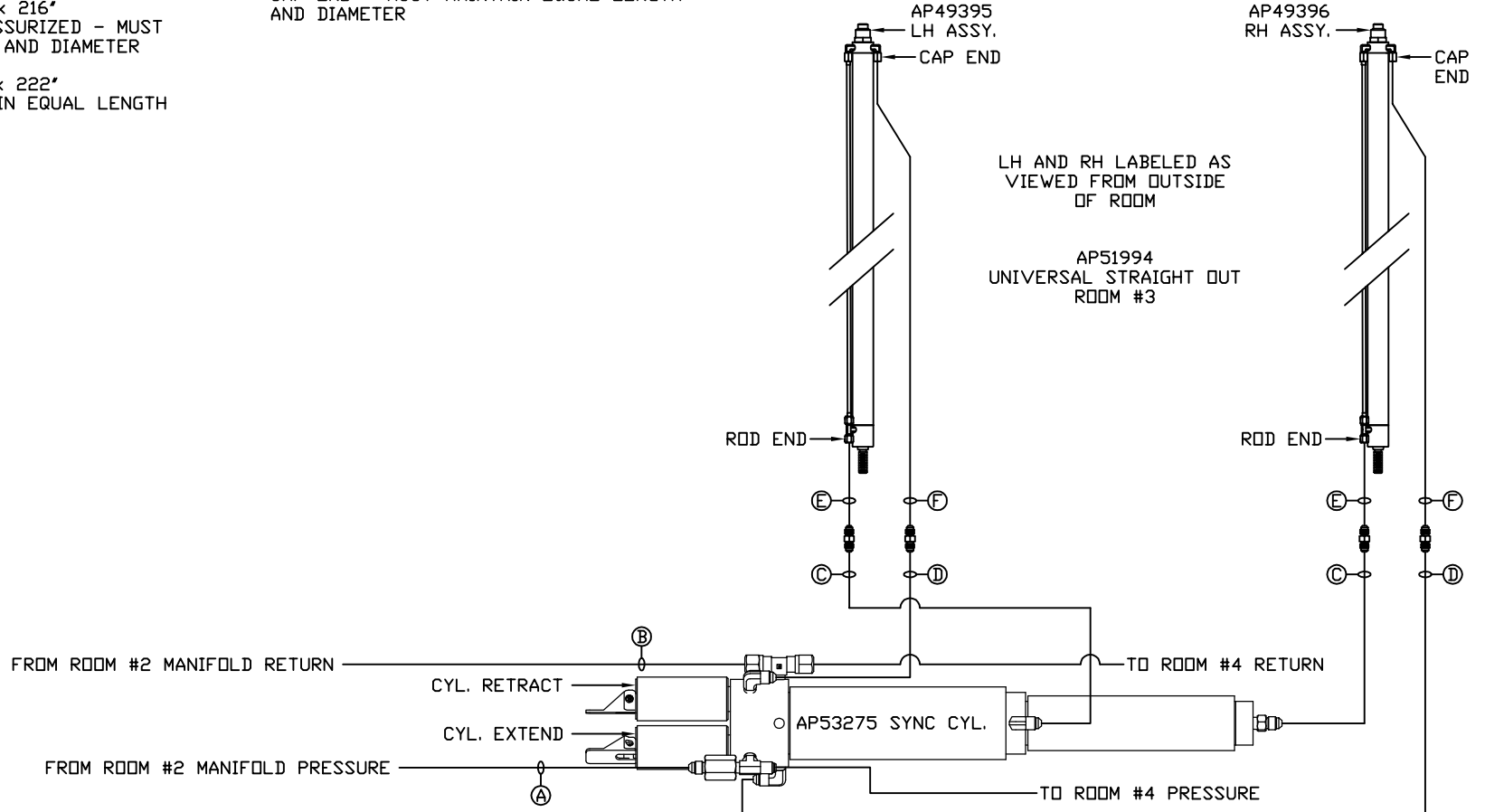
ROOM #2
AP39081
BED SLIDE KIT

MP70822 D/F
22FEB16

NOTE: HOSES ⑤ AND ⑥ ARE INCLUDED WITH THE ROOM EXTENSION MECHANISM

- ① AP4161 HOSE ASSY .25 x 120" PRESSURE
- ② .375" TUBING RETURN
- ③ AP51635 HOSE ASSY 03 x 216" ROD END - ALWAYS PRESSURIZED - MUST MAINTAIN EQUAL LENGTH AND DIAMETER
- ④ AP51405 HOSE ASSY 03 x 222" CAP END - MUST MAINTAIN EQUAL LENGTH AND DIAMETER

- ⑤ AP24632 HOSE ASSY HWH02HP x 48" ROD END - ALWAYS PRESSURIZED - MUST MAINTAIN EQUAL LENGTH AND DIAMETER
- ⑥ AP24818 HOSE ASSY HWH02HP x 86" CAP END - MUST MAINTAIN EQUAL LENGTH AND DIAMETER



LH AND RH LABELED AS VIEWED FROM OUTSIDE OF ROOM

AP51994 UNIVERSAL STRAIGHT OUT ROOM #3

NOTE: INSTALLATION MUST CONFORM TO GOOD SHOP PRACTICES, SAE STANDARDS, RVIA STANDARDS, AND OTHER APPLICABLE STANDARDS.

MP70822 E/F 22AUG14

