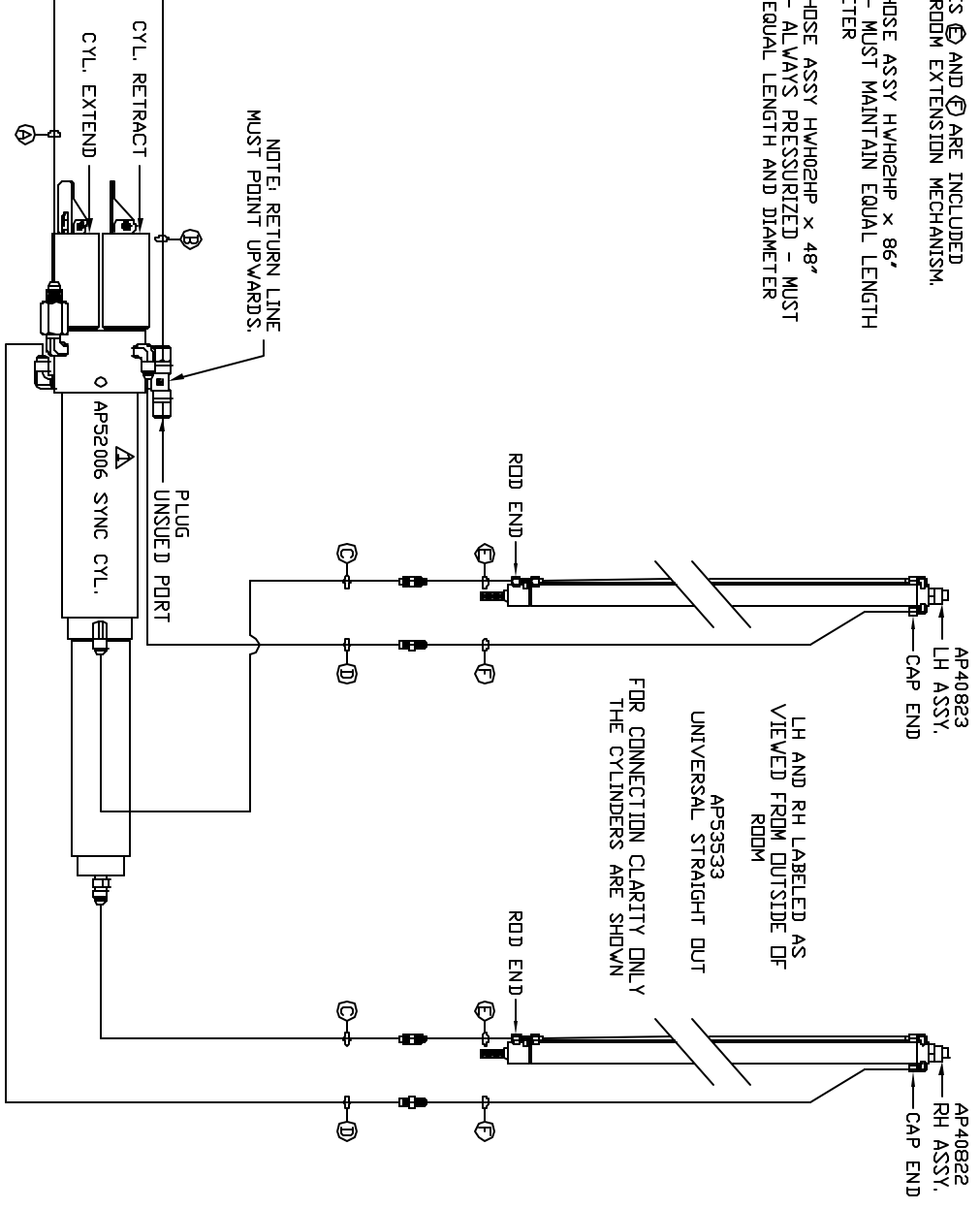
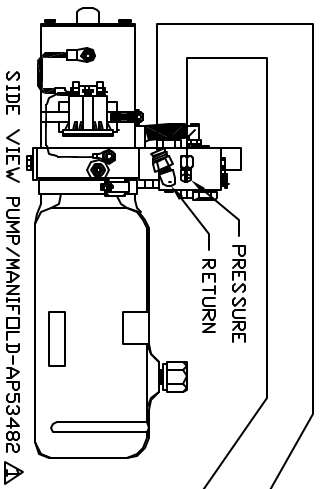


- ④ 25' ID HOSE
ROD END - ALWAYS PRESSURIZED
- ⑤ 25' ID HOSE
CAP END
- ⑥ 03 HOSE
ROD END - ALWAYS PRESSURIZED - MUST
MAINTAIN EQUAL LENGTH AND DIAMETER
- ⑦ 25' ID HOSE
CAP END - MUST MAINTAIN EQUAL LENGTH
AND DIAMETER

- ⑧ NOTE: HOSES ④ AND ⑦ ARE INCLUDED
WITH THE ROD EXTENSION MECHANISM.
- ⑨ AP24818 HOSE ASSY HWH02HP x 86'
CAP END - MUST MAINTAIN EQUAL LENGTH
AND DIAMETER
- ⑩ AP24632 HOSE ASSY HWH02HP x 48'
ROD END - ALWAYS PRESSURIZED - MUST
MAINTAIN EQUAL LENGTH AND DIAMETER



NOTE: INSTALLATION MUST CONFORM TO GOOD SHOP PRACTICES, SAE STANDARDS, RVIA STANDARDS, AND OTHER APPLICABLE STANDARDS.

CONTROL PACKAGE: AP53534

NO.	DATE	REVISION
Δ	17SEP14	WAS AP39221, AP45790

SCALE	DATE	DRAWN BY
1:6	06MAY14	
HYD CONN DIAGRAM		
DRAWING NUMBER		
MP70778		

THE INFORMATION DISCLOSED IN THIS DRAWING IS CONFIDENTIAL AND MUST NOT BE DISCLOSED OR USED IN ANY MANNER WHICH WILL BE DETRIMENTAL TO THE IRI CORPORATION

HWH 1-80 EXIT 267 SOUTH
RT 1 MOSCOV, IDVA 52760