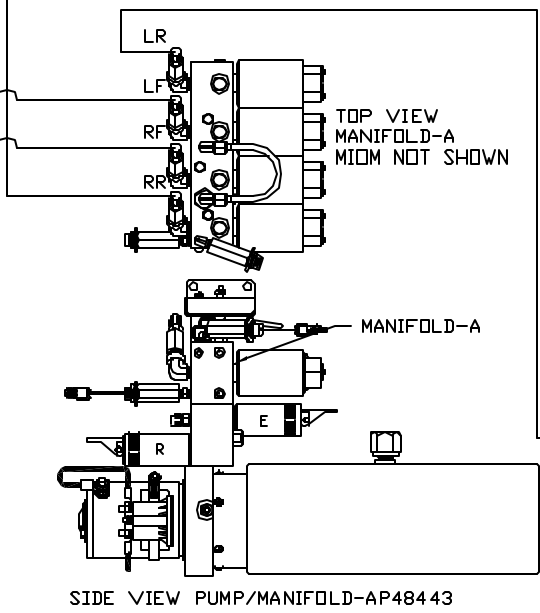
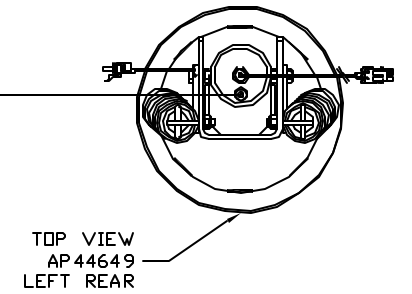
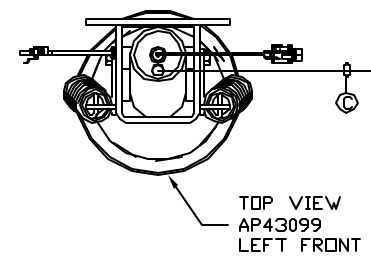
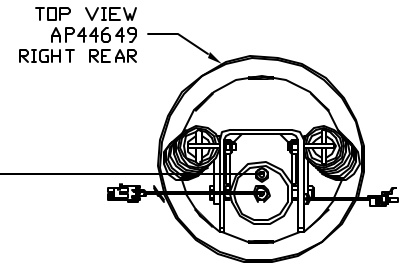
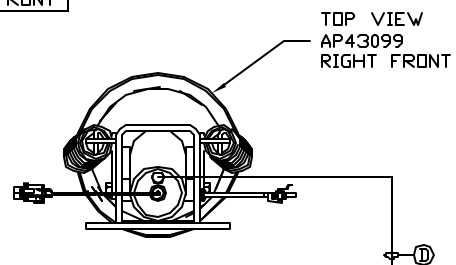


ORIENTATION
 FRONT



- Ⓐ AP2464 HOSE ASSY .25" x 324'
- Ⓑ AP4730 HOSE ASSY .25" x 356'
- Ⓒ AP6115 HOSE ASSY .25" x 168'
- Ⓓ AP4162 HOSE ASSY .25" x 192'

CROSS TIES REQUIRED FOR
 FRONT AND REAR JACKS

NOTE: INSTALLATION MUST CONFORM TO GOOD SHOP PRACTICES, SAE STANDARDS, RVIA STANDARDS, AND OTHER APPLICABLE STANDARDS.

LEVELING SYSTEM: AP53023

NO.	DATE	REVISION

HWH I-80 EXIT 267 SOUTH
 RT 1 MOSCOW, IDWA 52760

SCALE: 1:6 DATE 27FEB14 DRAWN BY .

HYD CONN DIAGRAM

THE INFORMATION DISCLOSED ON THIS DRAWING IS CONFIDENTIAL AND MUST NOT BE DISCLOSED OR USED IN ANY MANNER WHICH WILL BE DETRIMENTAL TO THE HWH CORPORATION

MATTHEWS

DRAWING NUMBER
 MP70757 A/B

Ⓐ .25" ID HOSE
ROD END - ALWAYS PRESSURIZED

Ⓑ .25" ID HOSE
CAP END (ROOM)

Ⓒ HOSE ASSY 3/16" ID
ROD END - ALWAYS PRESSURIZED - MUST
BE HIGH PRESSURE HOSES OF EQUAL
LENGTH AND DIAMETER

Ⓓ HOSE ASSY .25" ID
CAP END - MUST MAINTAIN EQUAL LENGTH
AND DIAMETER

Ⓔ AP24632 HOSE ASSY HWH02HP x 48"
ROD END - ALWAYS PRESSURIZED - MUST
BE HIGH PRESSURE HOSES OF EQUAL
LENGTH AND DIAMETER

Ⓕ AP24818 HOSE ASSY HWH02HP x 86"
CAP END - MUST MAINTAIN EQUAL LENGTH
AND DIAMETER

Ⓖ .25" ID HOSE ASSY
CAP END (LIFT)

Ⓗ HOSE ASSY 3/16" ID
CAP END (ROOM)

Ⓚ HOSE ASSY 3/16" ID
CAP END (ROOM)

Ⓛ HOSE ASSY 3/16" ID ROD END (LIFT)
ALWAYS PRESSURIZED

Ⓜ HOSE ASSY 3/16" ID
CAP END (LIFT)

Ⓝ .25" ID HOSE ASSY
ROD END - ALWAYS
PRESSURIZED (LIFT)

Ⓣ HOSE ASSY 3/16" ID ROD END (LIFT)
ALWAYS PRESSURIZED

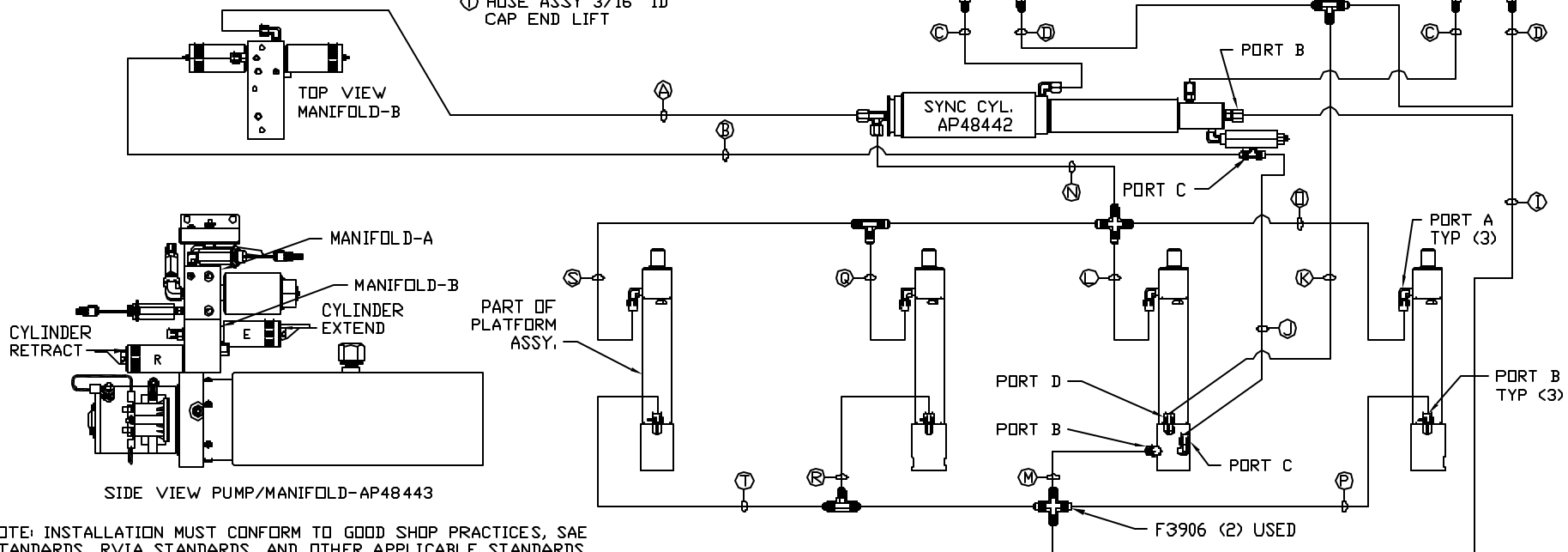
Ⓟ HOSE ASSY 3/16" ID
CAP END LIFT

Ⓡ HOSE ASSY 3/16" ID ROD END (LIFT)
ALWAYS PRESSURIZED

Ⓢ HOSE ASSY 3/16" ID
CAP END LIFT

Ⓤ HOSE ASSY 3/16" ID ROD END (LIFT)
ALWAYS PRESSURIZED

Ⓩ HOSE ASSY 3/16" ID
CAP END LIFT



LH AND RH LABELED AS
VIEWED FROM OUTSIDE
OF ROOM

AP48390
UNIVERSAL LEVEL IN / LEVEL OUT
ROOM #1

NOTE: HOSES Ⓔ AND Ⓕ ARE INCLUDED
WITH THE ROOM EXTENSION MECHANISM.

NOTE: HOSE Ⓖ IS INCLUDED
WITH THE SYNC. CYLINDER.

NOTE: INSTALLATION MUST CONFORM TO GOOD SHOP PRACTICES, SAE
STANDARDS, RVIA STANDARDS, AND OTHER APPLICABLE STANDARDS.

MP70757 B/B
27FEB14