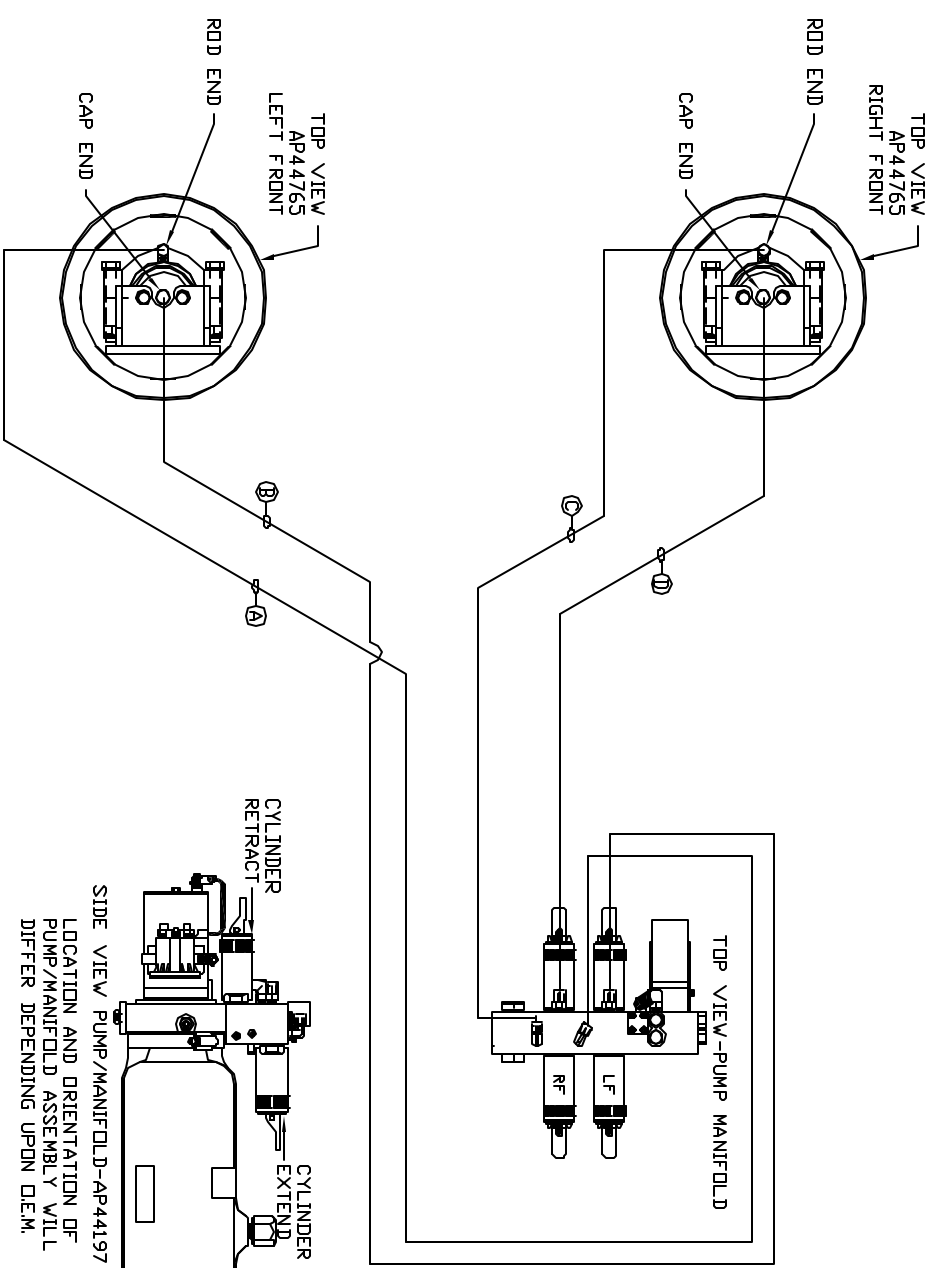


ORIENTATION  
FRONT



- Ⓐ AP4161 HOSE ASSY .25' x 120' ROD END
- Ⓑ AP49420 HOSE ASSY .25/05 x 108' CAP END
- Ⓒ AP6115 HOSE ASSY .25' x 168' ROD END
- Ⓓ AP43404 HOSE ASSY .25/05 x 156' CAP END

NOTE: INSTALLATION MUST CONFORM TO GOOD SHOP PRACTICES, SAE STANDARDS, RVIA STANDARDS, AND OTHER APPLICABLE STANDARDS.

CONTROL PACKAGE: AP53080

NO.	DATE	REVISION

<p>THE INFORMATION DISCLOSED IN THIS DRAWING IS CONFIDENTIAL AND MUST NOT BE DISCLOSED OR USED IN ANY MANNER WHICH WILL BE DETRIMENTAL TO THE IAH CORPORATION</p>	<p>HWH 1-80 EXIT 267 SOUTH RT 1 MOSCOW, IOWA 52760</p>
<p>SCALE 1:6 DATE 26FEB14 DRAWN BY .</p>	<p>HYD CONN DIAGRAM</p>
<p>STAR WAGGONS</p>	<p>DRAWING NUMBER MP70756</p>