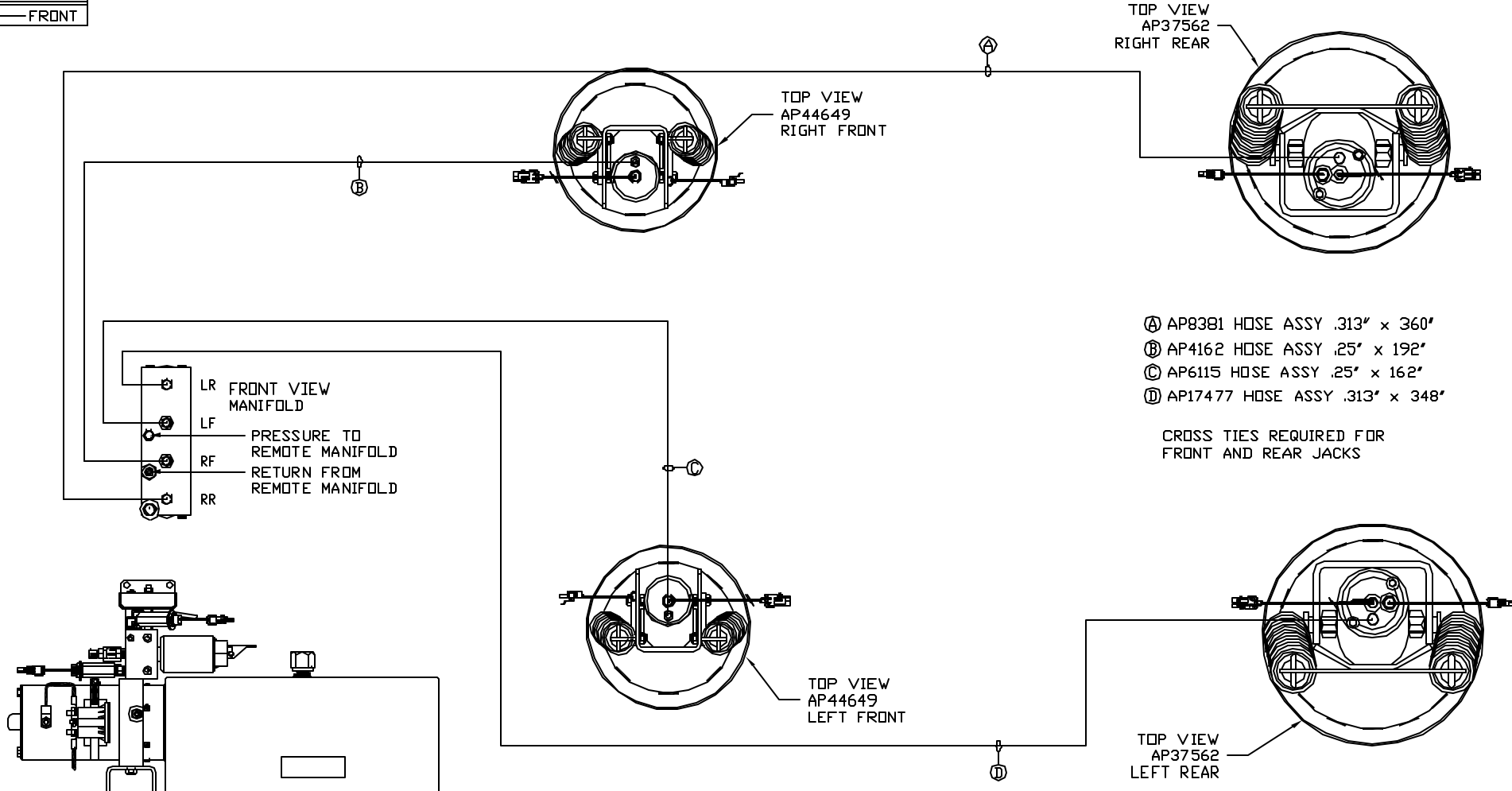
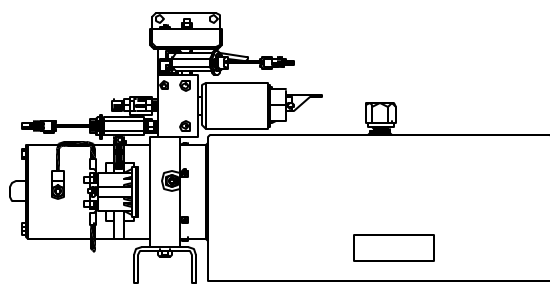


ORIENTATION
 FRONT



- Ⓐ AP8381 HOSE ASSY .313" x 360'
- Ⓑ AP4162 HOSE ASSY .25" x 192'
- Ⓒ AP6115 HOSE ASSY .25" x 162'
- Ⓓ AP17477 HOSE ASSY .313" x 348'

CROSS TIES REQUIRED FOR FRONT AND REAR JACKS



SIDE VIEW PUMP/MANIFOLD-AP53196

LOCATION AND ORIENTATION OF PUMP/MANIFOLD ASSEMBLY WILL DIFFER DEPENDING UPON O.E.M.

NOTE: INSTALLATION MUST CONFORM TO GOOD SHOP PRACTICES, SAE STANDARDS, RVIA STANDARDS, AND OTHER APPLICABLE STANDARDS.

LEVELING SYSTEM: AP53040

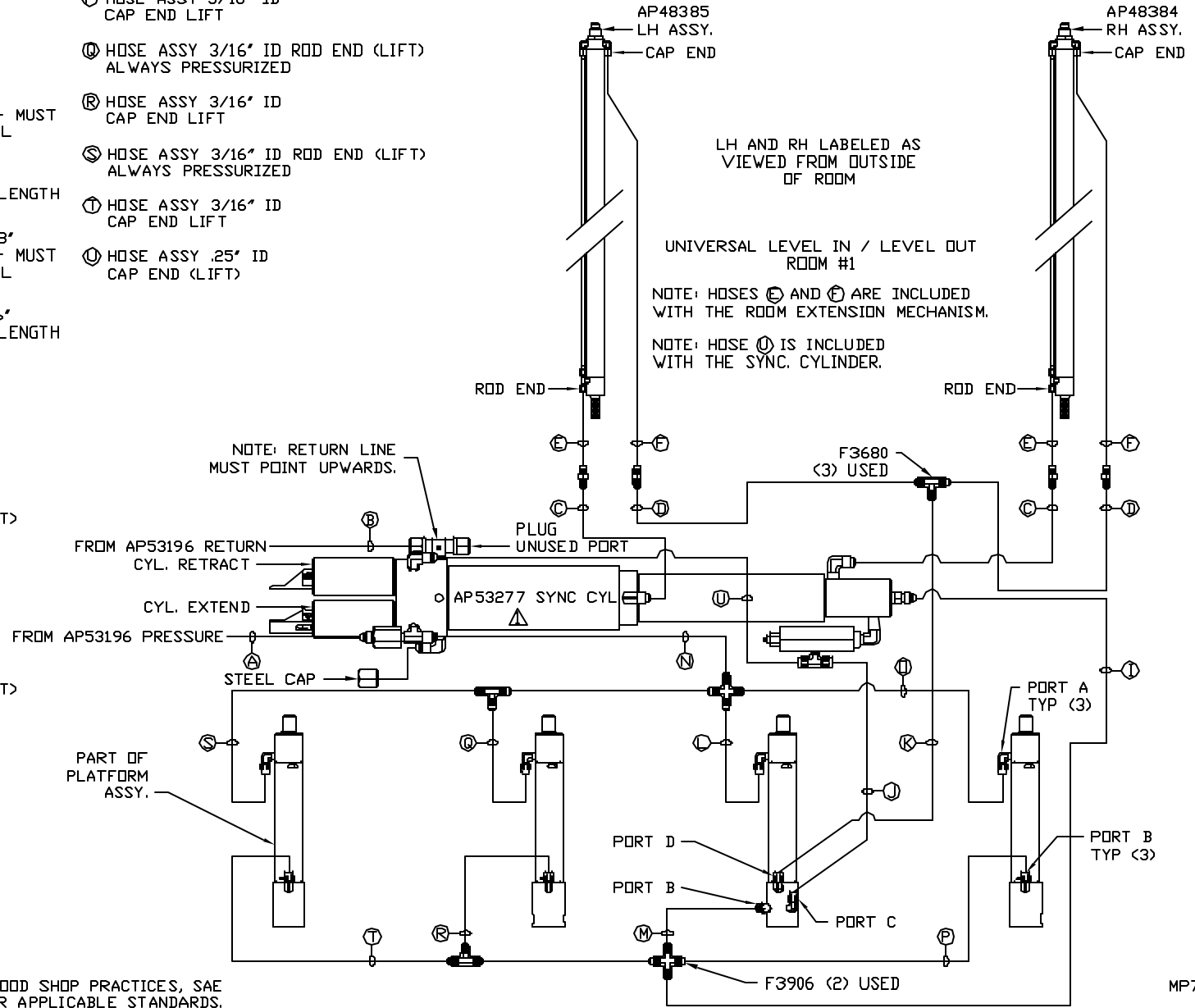
⚠	07MAY15	WAS AP48442
NO.	DATE	REVISION

THE INFORMATION DISCLOSED ON THIS DRAWING IS CONFIDENTIAL AND MUST NOT BE DISCLOSED OR USED IN ANY MANNER WHICH WILL BE DETRIMENTAL TO THE HWH CORPORATION

HWH		I-80 EXIT 267 SOUTH RT 1 MOSCOW, IOWA 52760	
SCALE 1:6	DATE 18FEB14	DRAWN BY .	
HYD CONN DIAGRAM			
MATTHEWS			DRAWING NUMBER MP70752 A/B

- Ⓐ HOSE ASSY .25" ID PRESSURE
- Ⓑ .375" ID NYLON TUBING RETURN
- Ⓒ HOSE ASSY 3/16" ID ROD END - ALWAYS PRESSURIZED - MUST BE HIGH PRESSURE HOSES OF EQUAL LENGTH AND DIAMETER
- Ⓓ HOSE ASSY .25" ID CAP END - MUST MAINTAIN EQUAL LENGTH AND DIAMETER
- Ⓔ AP24632 HOSE ASSY HWH02HP x 48' ROD END - ALWAYS PRESSURIZED - MUST BE HIGH PRESSURE HOSES OF EQUAL LENGTH AND DIAMETER
- Ⓕ AP24818 HOSE ASSY HWH02HP x 86' CAP END - MUST MAINTAIN EQUAL LENGTH AND DIAMETER
- Ⓖ .25" ID HOSE ASSY CAP END (LIFT)
- Ⓗ HOSE ASSY 3/16" ID CAP END (ROOM)
- Ⓙ HOSE ASSY 3/16" ID CAP END (ROOM)
- Ⓛ HOSE ASSY 3/16" ID ROD END (LIFT) ALWAYS PRESSURIZED
- Ⓜ HOSE ASSY 3/16" ID CAP END (LIFT)
- Ⓝ .25" ID HOSE ASSY ROD END - ALWAYS PRESSURIZED (LIFT)
- Ⓟ HOSE ASSY 3/16" ID ROD END (LIFT) ALWAYS PRESSURIZED

- Ⓠ HOSE ASSY 3/16" ID CAP END LIFT
- Ⓡ HOSE ASSY 3/16" ID CAP END LIFT
- Ⓢ HOSE ASSY 3/16" ID ROD END (LIFT) ALWAYS PRESSURIZED
- Ⓣ HOSE ASSY 3/16" ID CAP END LIFT
- Ⓤ HOSE ASSY .25" ID CAP END (LIFT)



NOTE: INSTALLATION MUST CONFORM TO GOOD SHOP PRACTICES, SAE STANDARDS, RVIA STANDARDS, AND OTHER APPLICABLE STANDARDS.

MP70752 B/B
07MAY15