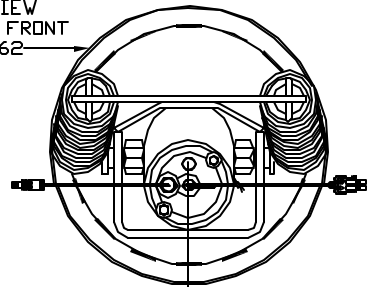
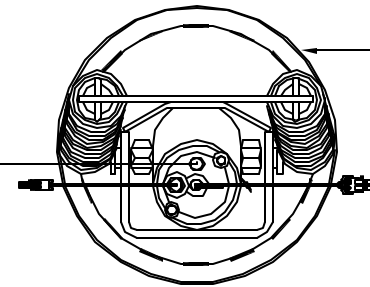


ORIENTATION  
FRONT

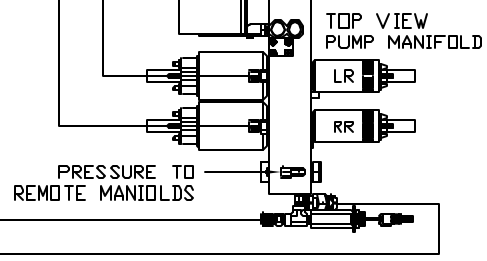
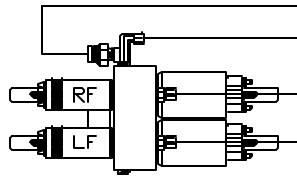
TOP VIEW  
RIGHT FRONT  
AP37562



TOP VIEW  
RIGHT REAR  
AP37562

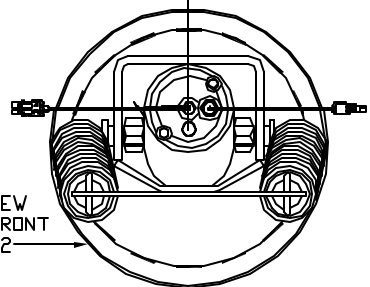


TOP VIEW  
MANIFOLD  
\*AP53078

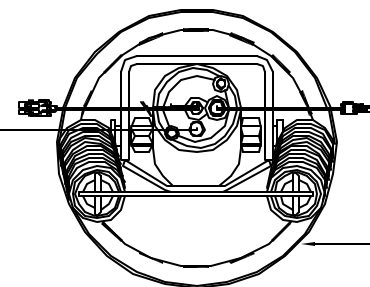


- Ⓐ AP42093 HOSE ASSY .313" x 276"
- Ⓑ AP22313 HOSE ASSY .313" x 192"
- Ⓒ AP19013 HOSE ASSY .313" x 180"
- Ⓓ AP8383 HOSE ASSY .313" x 96"
- Ⓔ \*AP4060 HOSE ASSY .25" x 24"
- Ⓕ \*20" M401501 .5" OD TUBING
- Ⓖ \*20" M401501 .5" OD TUBING

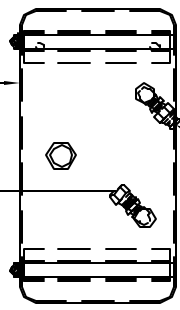
TOP VIEW  
LEFT FRONT  
AP37562



TOP VIEW  
LEFT REAR  
AP37562

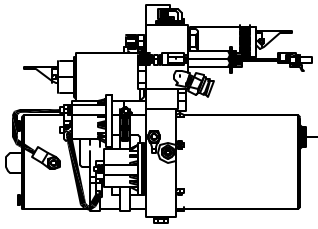


\*P37255 TANK



RETURN FROM  
REMOTE MANIFOLDS

SIDE VIEW OF PRIMARY PUMP/MANIFOLD-\*AP53079  
\*1 PART OF AP53076 POWER/CONTROL



CROSS-TIES REQUIRED FOR  
STRAIGHT-ACTING JACKS  
ON BOTH FRONT AND REAR.

NOTE: INSTALLATION MUST CONFORM TO GOOD SHOP PRACTICES, SAE STANDARDS, RVIA STANDARDS, AND OTHER APPLICABLE STANDARDS. LEVELING SYSTEM: AP53055

⚠	07JUL15	WAS DUAL CYL. LIFT
⚠	07MAY15	WAS AP48181
⚠	07MAY15	WAS AP52513, ADD NOTE
NO.	DATE	REVISION

THE INFORMATION DISCLOSED ON THIS DRAWING IS CONFIDENTIAL AND MUST NOT BE DISCLOSED OR USED IN ANY MANNER WHICH WILL BE DETRIMENTAL TO THE HWH CORPORATION

HWH I-80 EXIT 267 SOUTH  
RT 1 MOSCOW, IOWA 52760  
SCALE: 1:6 DATE 31JAN14 DRAWN BY .

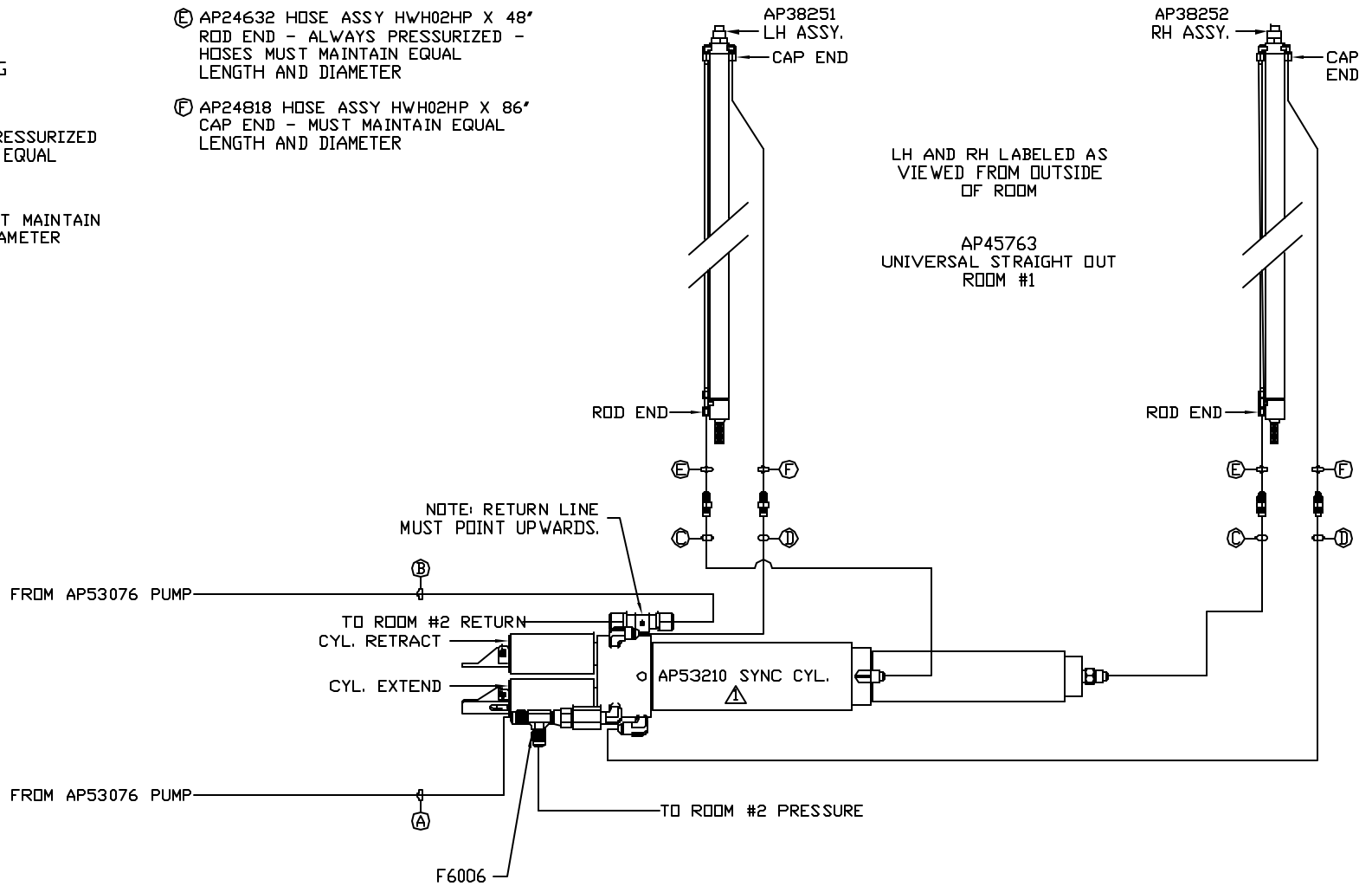
HYD CONN DIAGRAM

FRONTLINE DRAWING NUMBER  
MP70746 A/E

NOTE: HOSES (E) AND (F) ARE INCLUDED WITH THE ROOM EXTENSION MECHANISM

- (A) HOSE ASSY .25" ID PRESSURE
- (B) .375" OD NYLON TUBING RETURN
- (C) HOSE ASSY 3/16" ID ROD END - ALWAYS PRESSURIZED - HOSES MUST MAINTAIN EQUAL LENGTH AND DIAMETER
- (D) HOSE ASSY .25" ID CAP END - HOSES MUST MAINTAIN EQUAL LENGTH AND DIAMETER

- (E) AP24632 HOSE ASSY HWH02HP X 48' ROD END - ALWAYS PRESSURIZED - HOSES MUST MAINTAIN EQUAL LENGTH AND DIAMETER
- (F) AP24818 HOSE ASSY HWH02HP X 86' CAP END - MUST MAINTAIN EQUAL LENGTH AND DIAMETER



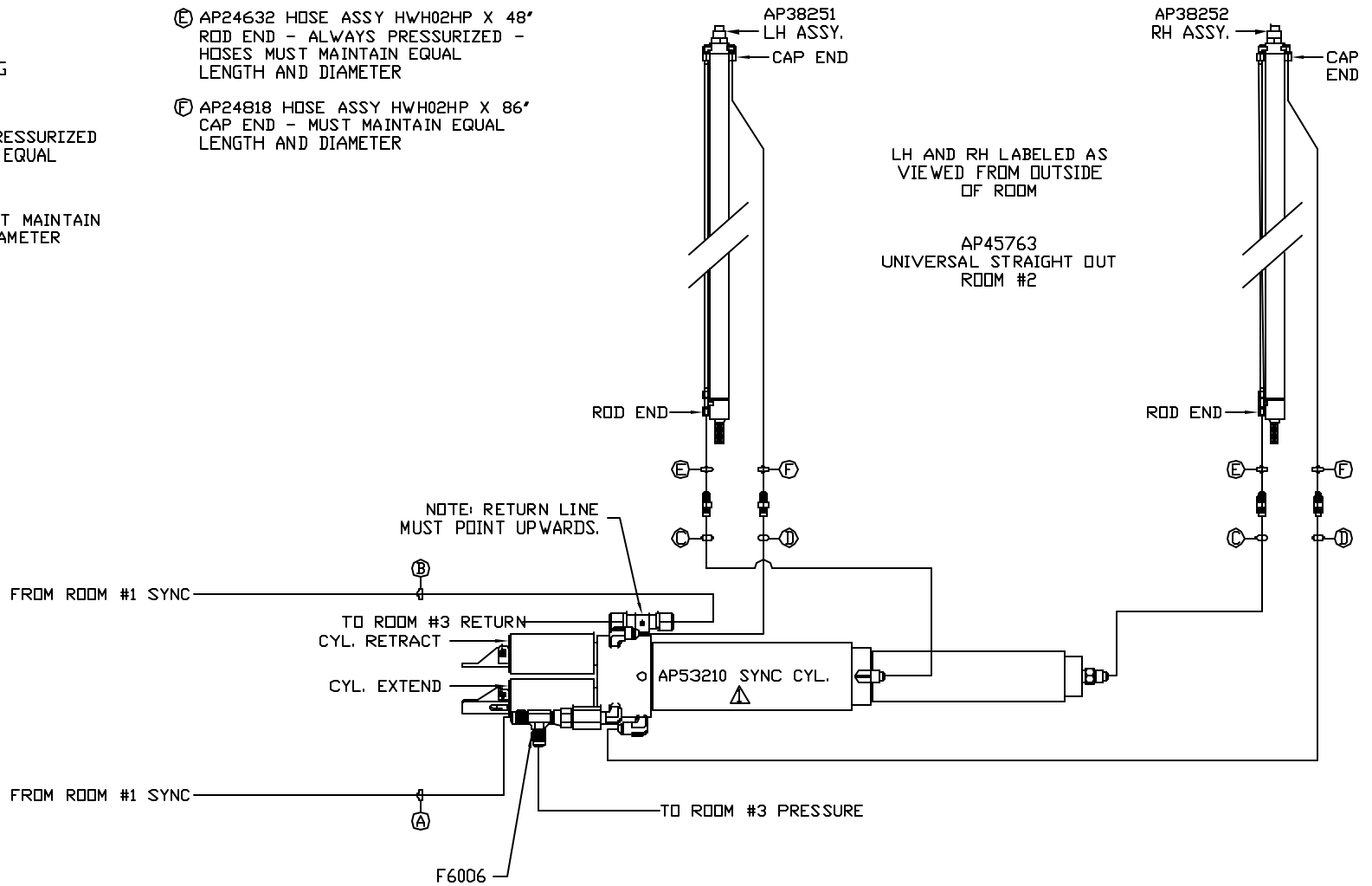
NOTE: INSTALLATION MUST CONFORM TO GOOD SHOP PRACTICES, SAE STANDARDS, RVIA STANDARDS, AND OTHER APPLICABLE STANDARDS.

MP70746 B/E  
07MAY15

NOTE: HOSES (E) AND (F) ARE INCLUDED WITH THE ROOM EXTENSION MECHANISM

- (A) HOSE ASSY .25" ID PRESSURE
- (B) .375" OD NYLON TUBING RETURN
- (C) HOSE ASSY 3/16" ID ROD END - ALWAYS PRESSURIZED - HOSES MUST MAINTAIN EQUAL LENGTH AND DIAMETER
- (D) HOSE ASSY .25" ID CAP END - HOSES MUST MAINTAIN EQUAL LENGTH AND DIAMETER

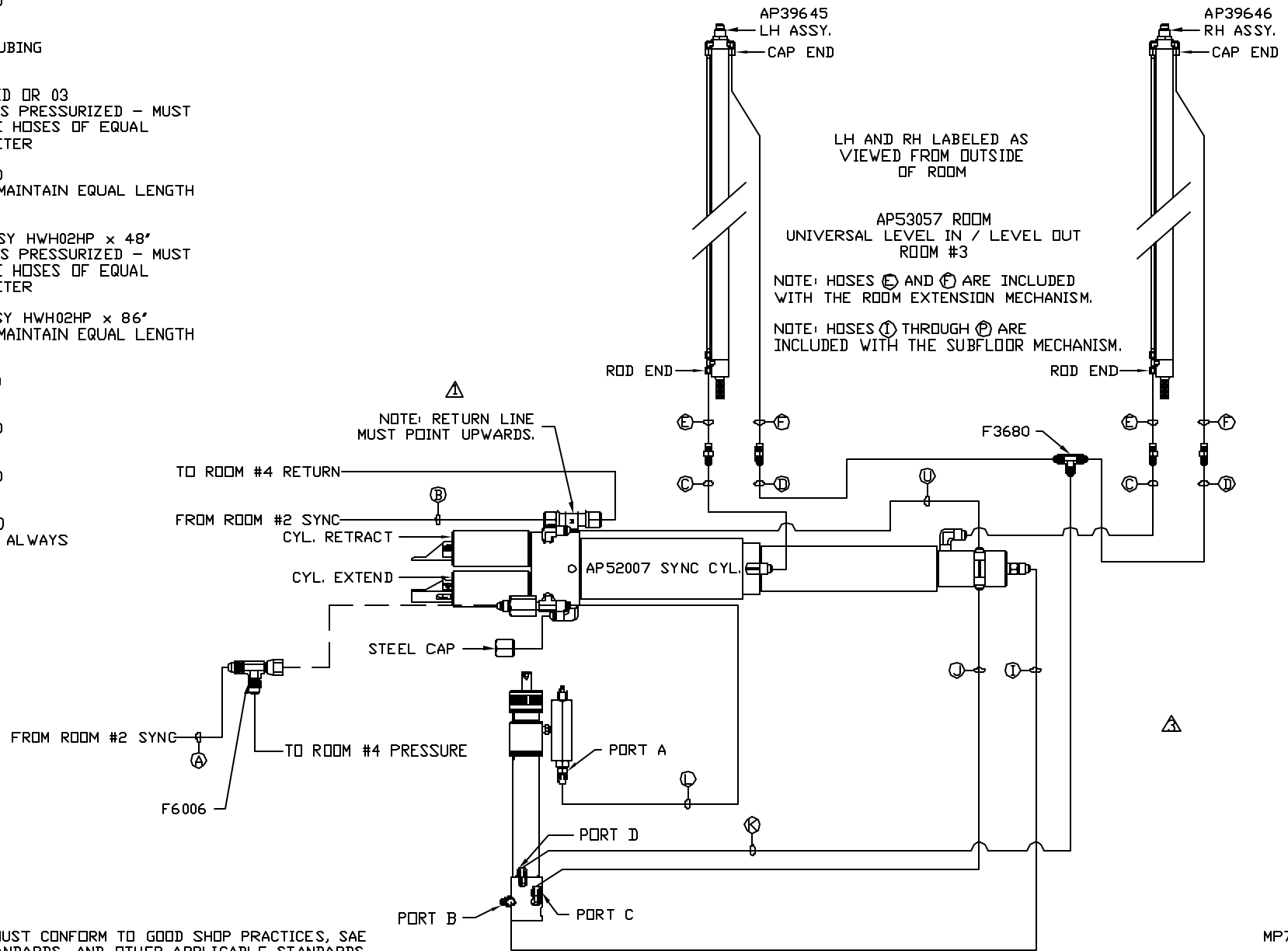
- (E) AP24632 HOSE ASSY HWH02HP X 48' ROD END - ALWAYS PRESSURIZED - HOSES MUST MAINTAIN EQUAL LENGTH AND DIAMETER
- (F) AP24818 HOSE ASSY HWH02HP X 86' CAP END - MUST MAINTAIN EQUAL LENGTH AND DIAMETER



NOTE: INSTALLATION MUST CONFORM TO GOOD SHOP PRACTICES, SAE STANDARDS, RVIA STANDARDS, AND OTHER APPLICABLE STANDARDS.

MP70746 C/E  
07MAY15

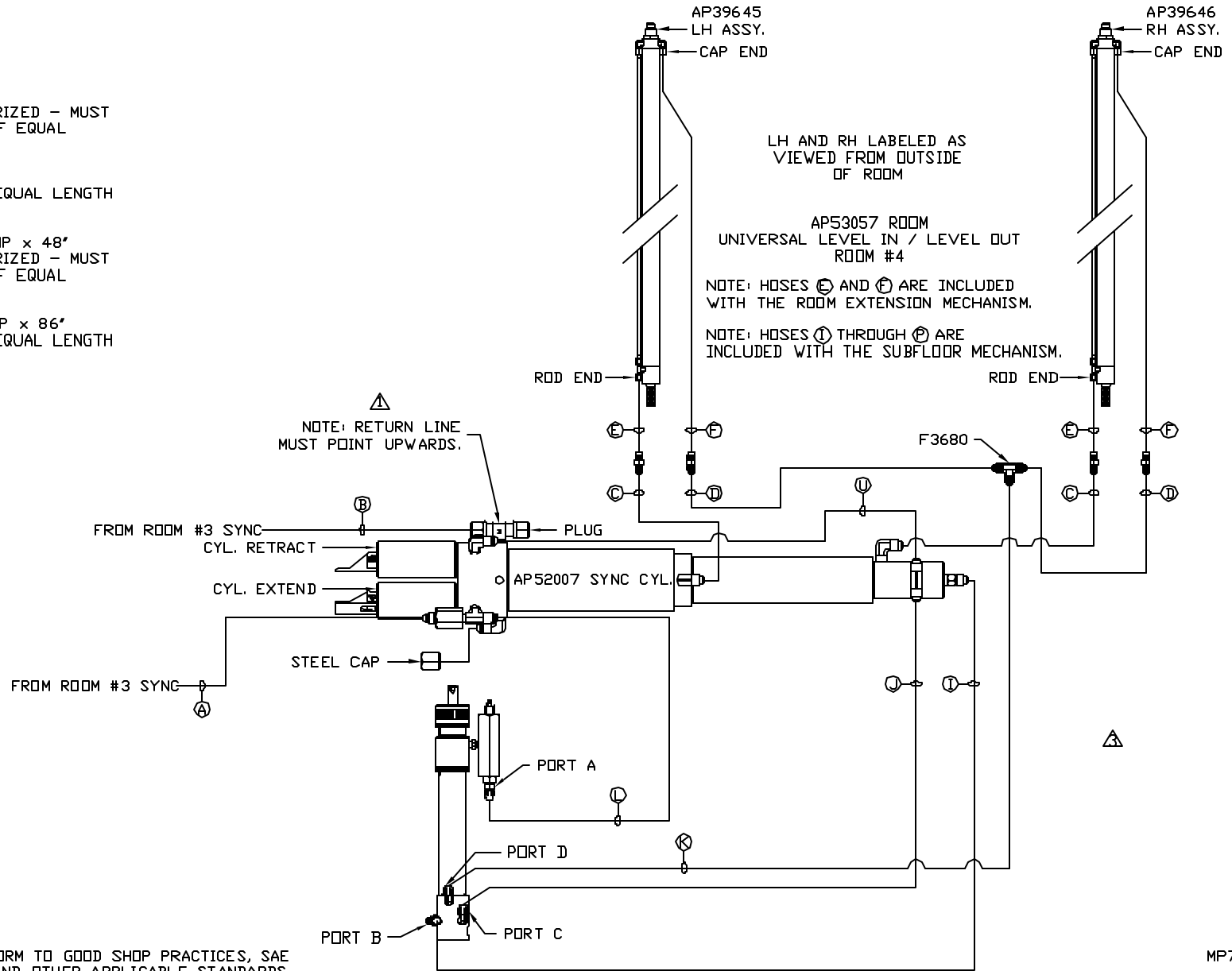
- Ⓐ HOSE ASSY .25" ID PRESSURE
- Ⓑ .375" OD NYLON TUBING RETURN
- Ⓒ HOSE ASSY .125" ID OR 03 ROD END - ALWAYS PRESSURIZED - MUST BE HIGH PRESSURE HOSES OF EQUAL LENGTH AND DIAMETER
- Ⓓ HOSE ASSY .25" ID CAP END - MUST MAINTAIN EQUAL LENGTH AND DIAMETER
- Ⓔ AP24632 HOSE ASSY HWH02HP x 48" ROD END - ALWAYS PRESSURIZED - MUST BE HIGH PRESSURE HOSES OF EQUAL LENGTH AND DIAMETER
- Ⓕ AP24818 HOSE ASSY HWH02HP x 86" CAP END - MUST MAINTAIN EQUAL LENGTH AND DIAMETER
- Ⓖ HOSE ASSY .25" ID CAP END (LIFT)
- Ⓣ HOSE ASSY .25" ID CAP END (LIFT)
- Ⓚ HOSE ASSY .25" ID CAP END (ROOM)
- Ⓛ HOSE ASSY .25" ID ROD END (LIFT) - ALWAYS PRESSURIZED



NOTE: INSTALLATION MUST CONFORM TO GOOD SHOP PRACTICES, SAE STANDARDS, RVIA STANDARDS, AND OTHER APPLICABLE STANDARDS.

MP70746 D/E  
07JUL15

- Ⓐ HOSE ASSY .25" ID PRESSURE
- Ⓑ .375" OD NYLON TUBING RETURN
- Ⓒ HOSE ASSY .125" ID OR 03 ROD END - ALWAYS PRESSURIZED - MUST BE HIGH PRESSURE HOSES OF EQUAL LENGTH AND DIAMETER
- Ⓓ HOSE ASSY .25" ID CAP END - MUST MAINTAIN EQUAL LENGTH AND DIAMETER
- Ⓔ AP24632 HOSE ASSY HWH02HP x 48" ROD END - ALWAYS PRESSURIZED - MUST BE HIGH PRESSURE HOSES OF EQUAL LENGTH AND DIAMETER
- Ⓕ AP24818 HOSE ASSY HWH02HP x 86" CAP END - MUST MAINTAIN EQUAL LENGTH AND DIAMETER
- Ⓖ HOSE ASSY .25" ID CAP END (LIFT)
- Ⓗ HOSE ASSY .25" ID CAP END (LIFT)
- Ⓚ HOSE ASSY .25" ID CAP END (ROOM)
- Ⓛ HOSE ASSY .25" ID ROD END (LIFT) - ALWAYS PRESSURIZED



NOTE: INSTALLATION MUST CONFORM TO GOOD SHOP PRACTICES, SAE STANDARDS, RVIA STANDARDS, AND OTHER APPLICABLE STANDARDS.

MP70746 E/E  
07JUL15