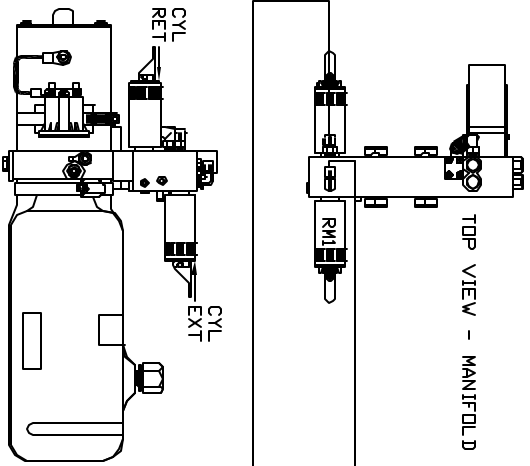


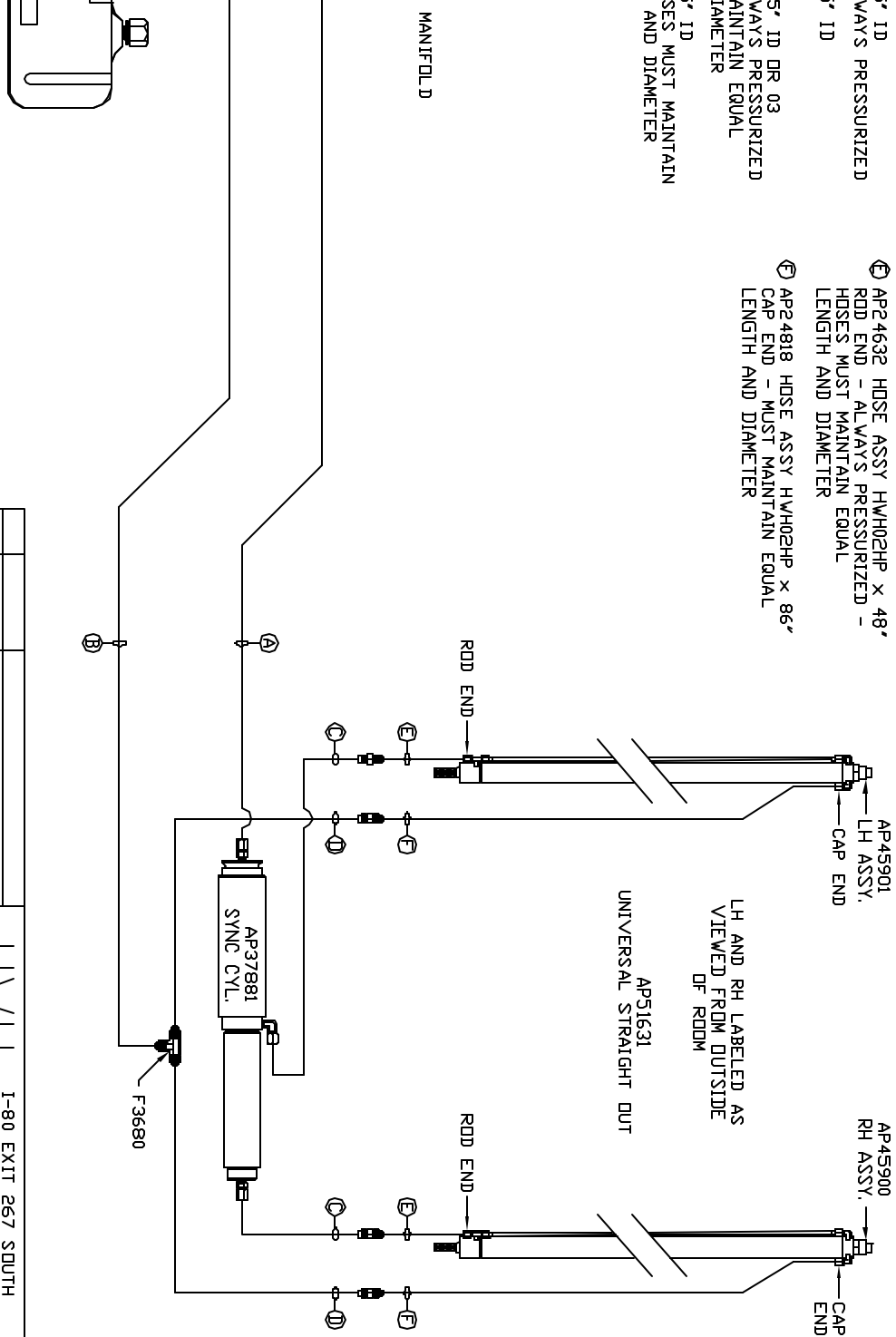
NOTE: HOSES ③ AND ④ ARE INCLUDED WITH THE ROOM EXTENSION MECHANISM

- ① HOSE ASSY .25" ID  
ROD END - ALWAYS PRESSURIZED
- ② HOSE ASSY .25" ID  
CAP END
- ③ HOSE ASSY .125" ID DR 03  
ROD END - ALWAYS PRESSURIZED  
HOSES MUST MAINTAIN EQUAL LENGTH AND DIAMETER
- ④ HOSE ASSY .25" ID  
CAP END - HOSES MUST MAINTAIN EQUAL LENGTH AND DIAMETER
- ⑤ AP24632 HOSE ASSY HW/H02HP X 48"  
ROD END - ALWAYS PRESSURIZED - HOSES MUST MAINTAIN EQUAL LENGTH AND DIAMETER
- ⑥ AP24818 HOSE ASSY HW/H02HP X 86"  
CAP END - MUST MAINTAIN EQUAL LENGTH AND DIAMETER

TOP VIEW - MANIFOLD



SIDE VIEW PUMP/MANIFOLD-AP 45790  
LOCATION AND ORIENTATION OF PUMP/MANIFOLD ASSEMBLY WILL DIFFER DEPENDING UPON D.E.M.



NOTE: INSTALLATION MUST CONFORM TO GOOD SHOP PRACTICES, SAE STANDARDS, RVIA STANDARDS, AND OTHER APPLICABLE STANDARDS.

CONTROL PACKAGE: AP51629

NO.	DATE	REVISION

THE INFORMATION DISCLOSED IN THIS DRAWING IS CONFIDENTIAL AND MUST NOT BE DISCLOSED OR USED IN ANY MANNER WHICH WILL BE DETRIMENTAL TO THE IAH CORPORATION

**HWH** 1-80 EXIT 267 SOUTH  
 RT 1 MOSCOW, IDVA 52760  
 SCALE 1:6 DATE 06DEC13 DRAWN BY .  
**HYD CONN DIAGRAM**  
**C3 CONVERSIONS** DRAWING NUMBER MP70722