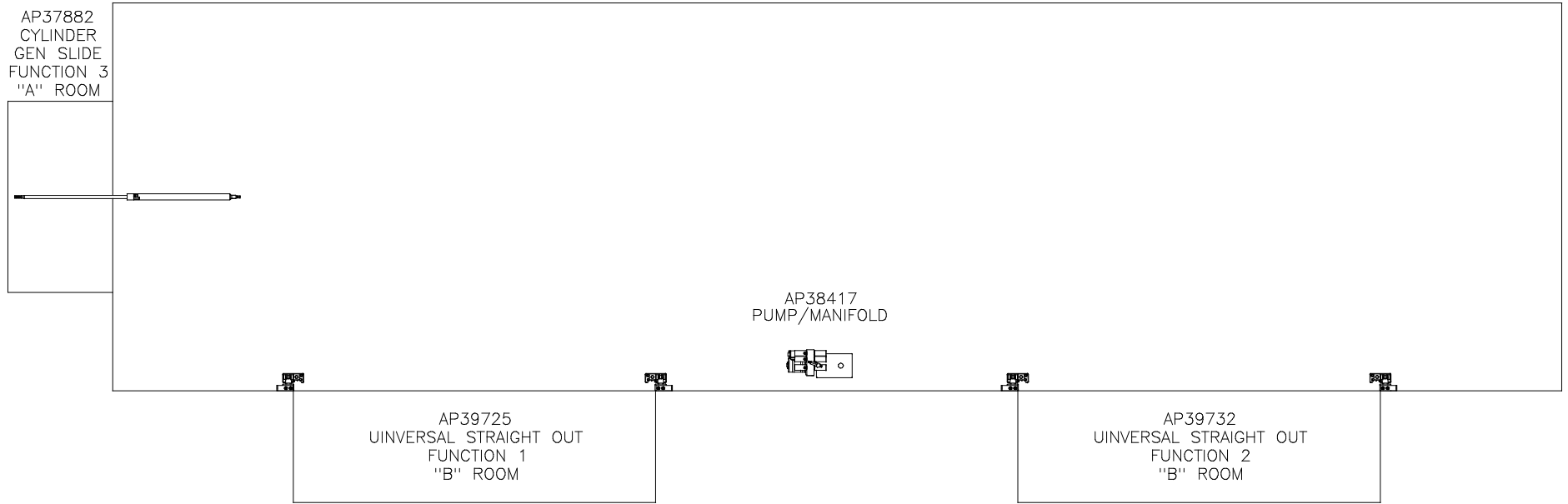


ORIENTATION
 ← FRONT

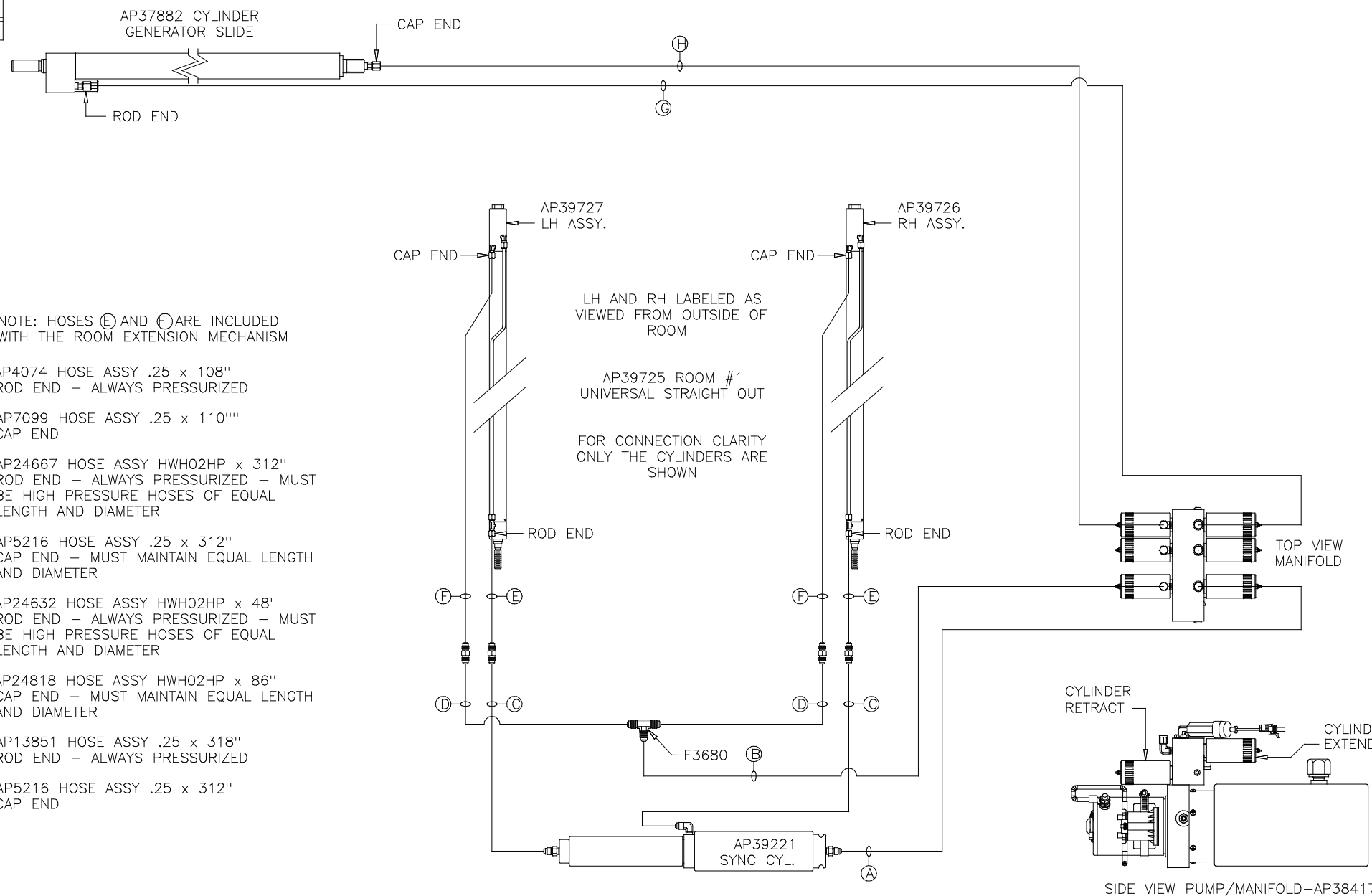


NOTE: INSTALLATION MUST CONFORM TO GOOD SHOP PRACTICES, SAE STANDARDS, RVIA STANDARDS, AND OTHER APPLICABLE STANDARDS.

LEVELING SYSTEM: AP51344

			HWH		I-80 EXIT 267 SOUTH RT 1 MOSCOW, IOWA 52760	
			SCALE 1:6	DATE 05FEB13	DRAWN BY .	
			HYD CONN DIAGRAM			
NO.	DATE	REVISION	FORETRAVEL		DRAWING NUMBER MP70617 A/C	
THE INFORMATION DISCLOSED ON THIS DRAWING IS CONFIDENTIAL AND MUST NOT BE DISCLOSED OR USED IN ANY MANNER WHICH WILL BE DETRIMENTAL TO THE HWH CORPORATION						

ORIENTATION
FRONT



NOTE: HOSES (E) AND (G) ARE INCLUDED WITH THE ROOM EXTENSION MECHANISM

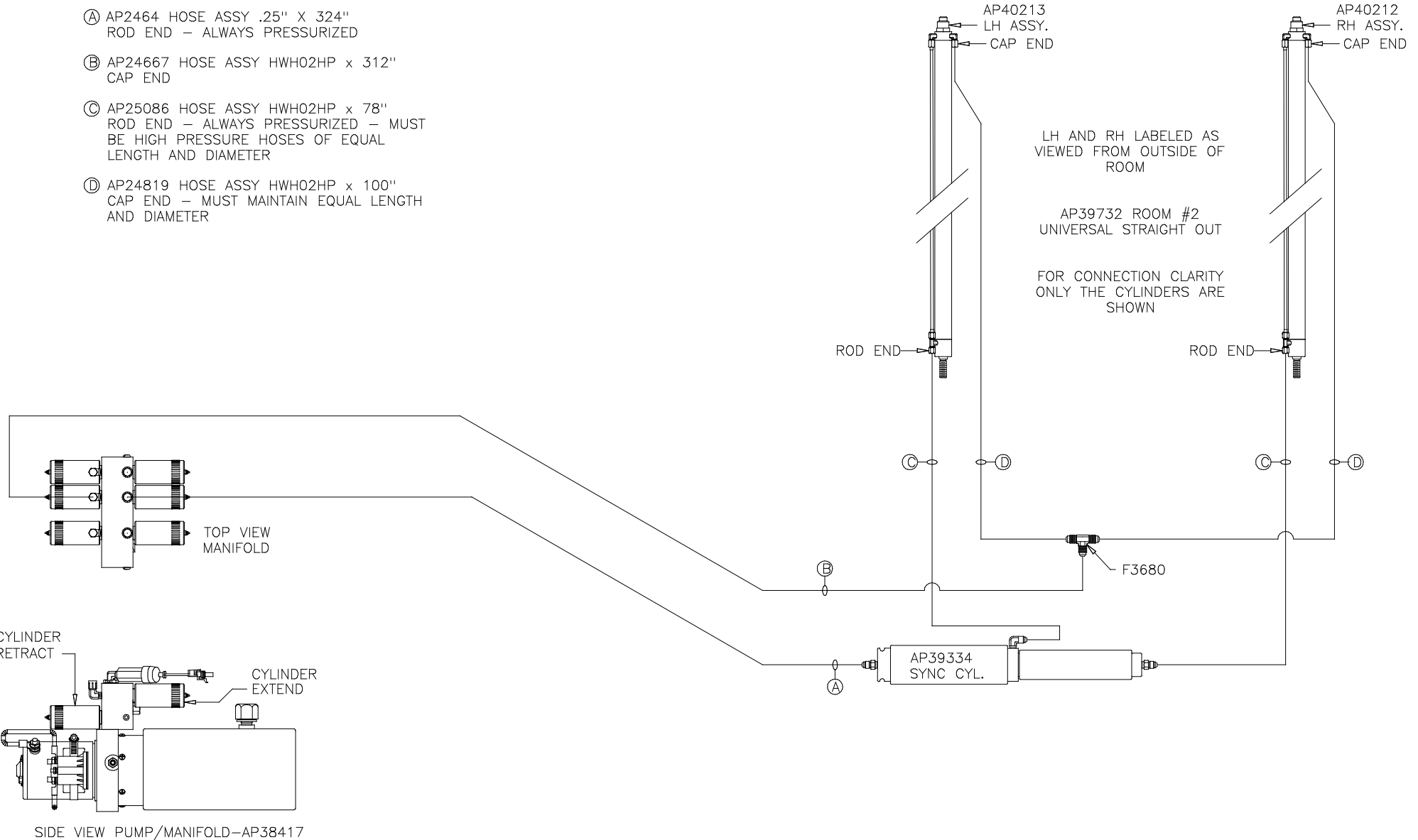
- (A) AP4074 HOSE ASSY .25 x 108" ROD END - ALWAYS PRESSURIZED
- (B) AP7099 HOSE ASSY .25 x 110" CAP END
- (C) AP24667 HOSE ASSY HWH02HP x 312" ROD END - ALWAYS PRESSURIZED - MUST BE HIGH PRESSURE HOSES OF EQUAL LENGTH AND DIAMETER
- (D) AP5216 HOSE ASSY .25 x 312" CAP END - MUST MAINTAIN EQUAL LENGTH AND DIAMETER
- (E) AP24632 HOSE ASSY HWH02HP x 48" ROD END - ALWAYS PRESSURIZED - MUST BE HIGH PRESSURE HOSES OF EQUAL LENGTH AND DIAMETER
- (F) AP24818 HOSE ASSY HWH02HP x 86" CAP END - MUST MAINTAIN EQUAL LENGTH AND DIAMETER
- (G) AP13851 HOSE ASSY .25 x 318" ROD END - ALWAYS PRESSURIZED
- (H) AP5216 HOSE ASSY .25 x 312" CAP END

NOTE: INSTALLATION MUST CONFORM TO GOOD SHOP PRACTICES, SAE STANDARDS, RVIA STANDARDS, AND OTHER APPLICABLE STANDARDS.

ORIENTATION
 ← FRONT

NOTE: HOSES (C) AND (D) ARE INCLUDED WITH THE ROOM EXTENSION MECHANISM

- (A) AP2464 HOSE ASSY .25" X 324" ROD END - ALWAYS PRESSURIZED
- (B) AP24667 HOSE ASSY HWH02HP x 312" CAP END
- (C) AP25086 HOSE ASSY HWH02HP x 78" ROD END - ALWAYS PRESSURIZED - MUST BE HIGH PRESSURE HOSES OF EQUAL LENGTH AND DIAMETER
- (D) AP24819 HOSE ASSY HWH02HP x 100" CAP END - MUST MAINTAIN EQUAL LENGTH AND DIAMETER



NOTE: INSTALLATION MUST CONFORM TO GOOD SHOP PRACTICES, SAE STANDARDS, RVIA STANDARDS, AND OTHER APPLICABLE STANDARDS.

MP70617 C/C
 05FEB13