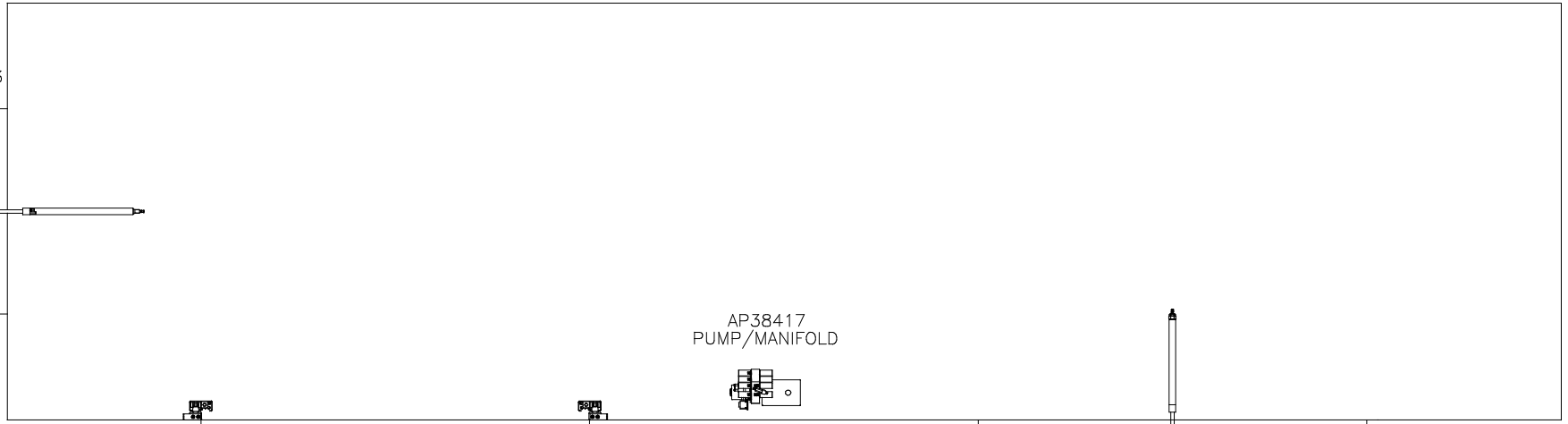


ORIENTATION  
 ← FRONT

AP37882  
 CYLINDER  
 GEN SLIDE  
 FUNCTION 3  
 "A" ROOM



AP39553  
 UNIVERSAL STRAIGHT OUT  
 FUNCTION 1  
 "B" ROOM

AP38417  
 PUMP/MANIFOLD

AP39081  
 BED SLIDE  
 FUNCTION 2  
 "A" ROOM

NO.	DATE	REVISION

HWH 1-80 EXIT 267 SOUTH  
 RT 1 MOSCOW, IOWA 52760  
 SCALE 1:6 DATE 13JUL12 DRAWN BY .

HYD CONN DIAGRAM

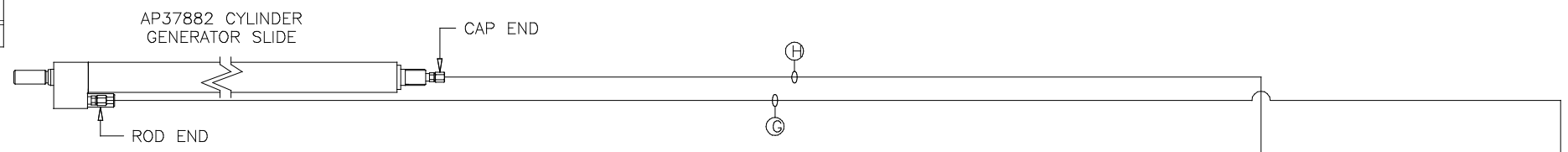
THE INFORMATION DISCLOSED ON THIS DRAWING IS CONFIDENTIAL AND MUST NOT BE DISCLOSED OR USED IN ANY MANNER WHICH WILL BE DETRIMENTAL TO THE HWH CORPORATION

FORETRAVEL DRAWING NUMBER MP70566 A/C

NOTE: INSTALLATION MUST CONFORM TO GOOD SHOP PRACTICES, SAE STANDARDS, RVIA STANDARDS, AND OTHER APPLICABLE STANDARDS.

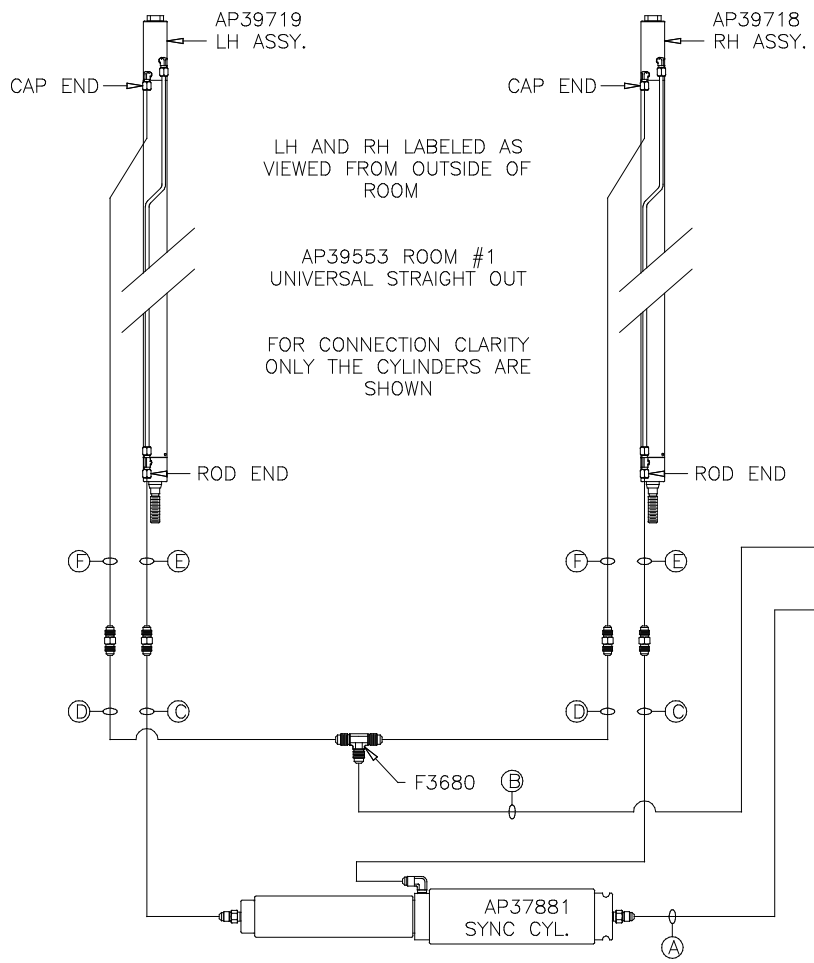
LEVELING SYSTEM: AP50369

ORIENTATION  
← FRONT



NOTE: HOSES E and F ARE INCLUDED WITH THE ROOM EXTENSION MECHANISM

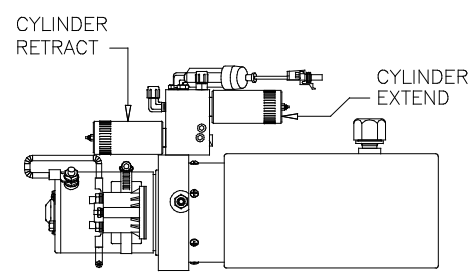
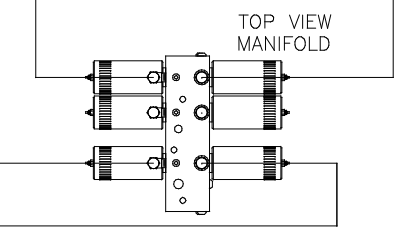
- A AP4074 HOSE ASSY .25" x 108"  
ROD END - ALWAYS PRESSURIZED
- B AP7099 HOSE ASSY .25" x 110"  
CAP END
- C AP24667 HOSE ASSY HWH02HP x 312"  
ROD END - ALWAYS PRESSURIZED - MUST BE HIGH PRESSURE HOSES OF EQUAL LENGTH AND DIAMETER
- D AP5216 HOSE ASSY .25" x 312"  
CAP END - MUST MAINTAIN EQUAL LENGTH AND DIAMETER
- E AP24632 HOSE ASSY HWH02HP x 48"  
ROD END - ALWAYS PRESSURIZED - MUST BE HIGH PRESSURE HOSES OF EQUAL LENGTH AND DIAMETER
- F AP24818 HOSE ASSY HWH02HP x 86"  
CAP END - MUST MAINTAIN EQUAL LENGTH AND DIAMETER
- G AP13851 HOSE ASSY .25" x 318"  
ROD END - ALWAYS PRESSURIZED
- H AP5216 HOSE ASSY .25" x 312"  
CAP END



LH AND RH LABELED AS VIEWED FROM OUTSIDE OF ROOM

AP39553 ROOM #1 UNIVERSAL STRAIGHT OUT

FOR CONNECTION CLARITY ONLY THE CYLINDERS ARE SHOWN



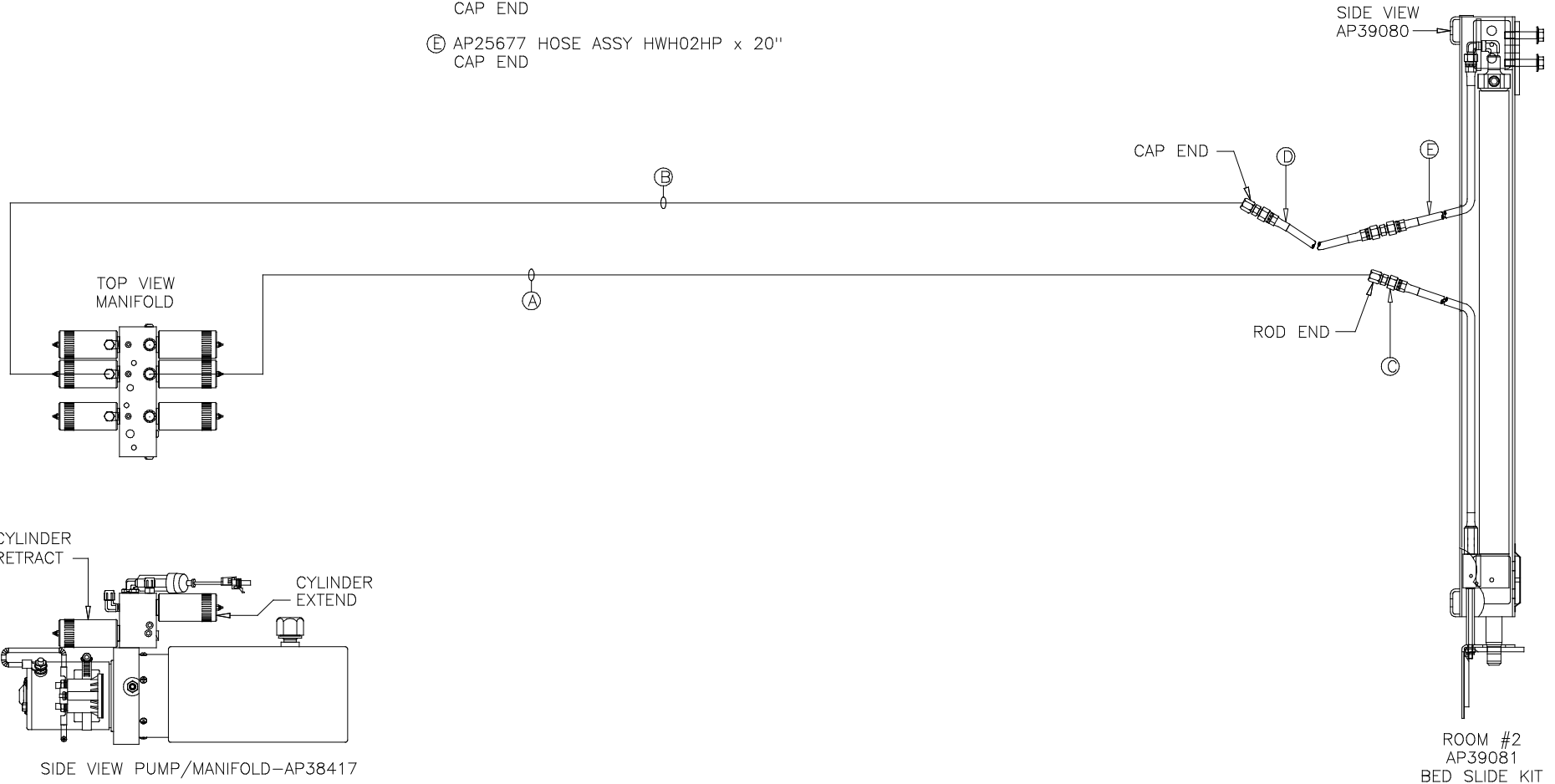
SIDE VIEW PUMP/MANIFOLD-AP38417

NOTE: INSTALLATION MUST CONFORM TO GOOD SHOP PRACTICES, SAE STANDARDS, RVIA STANDARDS, AND OTHER APPLICABLE STANDARDS.

ORIENTATION  
 ← FRONT

NOTE: HOSES ③, ④ AND ⑤ ARE INCLUDED WITH THE ROOM EXTENSION MECHANISM

- ① AP4164 HOSE ASSY .25 x 384"  
 ROD END - ALWAYS PRESSURIZED
- ② AP4391 HOSE ASSY .25 x 372"  
 CAP END
- ③ AP24632 HOSE ASSY HWH02HP x 48"  
 ROD END - ALWAYS PRESSURIZED
- ④ AP24628 HOSE ASSY HWH02HP x 24.25"  
 CAP END
- ⑤ AP25677 HOSE ASSY HWH02HP x 20"  
 CAP END



SIDE VIEW PUMP/MANIFOLD-AP38417

ROOM #2  
 AP39081  
 BED SLIDE KIT

NOTE: INSTALLATION MUST CONFORM TO GOOD SHOP PRACTICES, SAE STANDARDS, RVIA STANDARDS, AND OTHER APPLICABLE STANDARDS.