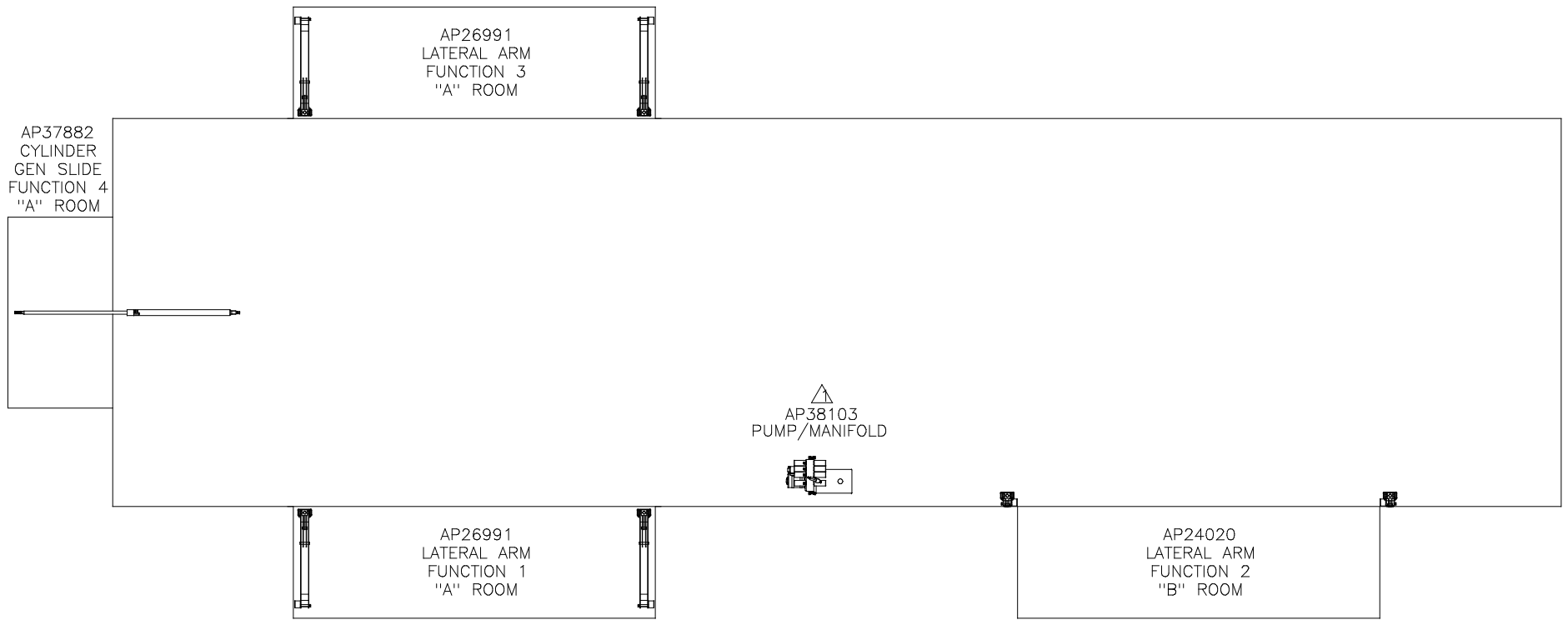


ORIENTATION  
 ← FRONT



△	01FEB13	WAS AP34209
NO.	DATE	REVISION

HWH I-80 EXIT 267 SOUTH  
 RT 1 MOSCOW, IOWA 52760  
 SCALE 1:6 DATE 13JUL12 DRAWN BY .  
 HYD CONN DIAGRAM

NOTE: INSTALLATION MUST CONFORM TO GOOD SHOP PRACTICES, SAE STANDARDS, RVIA STANDARDS, AND OTHER APPLICABLE STANDARDS.

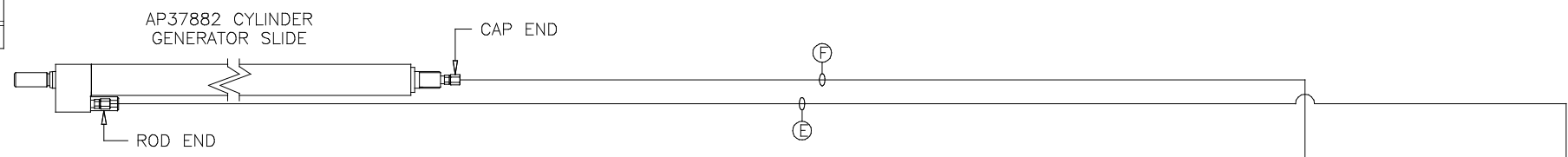
LEVELING SYSTEM: AP44744  
 CONVERTED FROM AP37800

THE INFORMATION DISCLOSED ON THIS DRAWING IS CONFIDENTIAL AND MUST NOT BE DISCLOSED OR USED IN ANY MANNER WHICH WILL BE DETRIMENTAL TO THE HWH CORPORATION

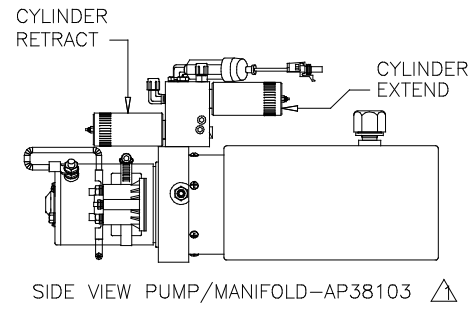
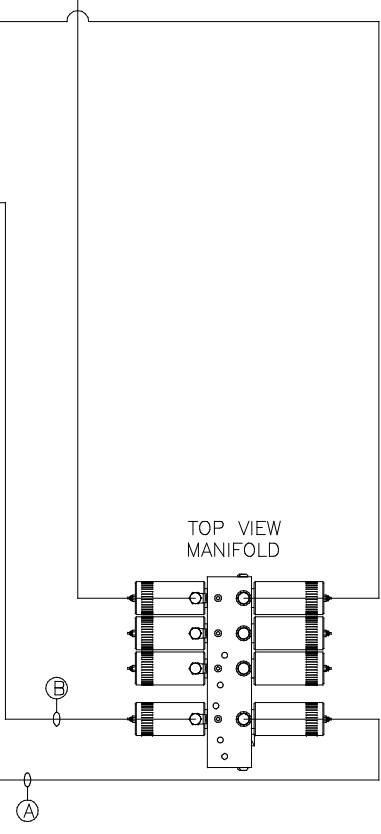
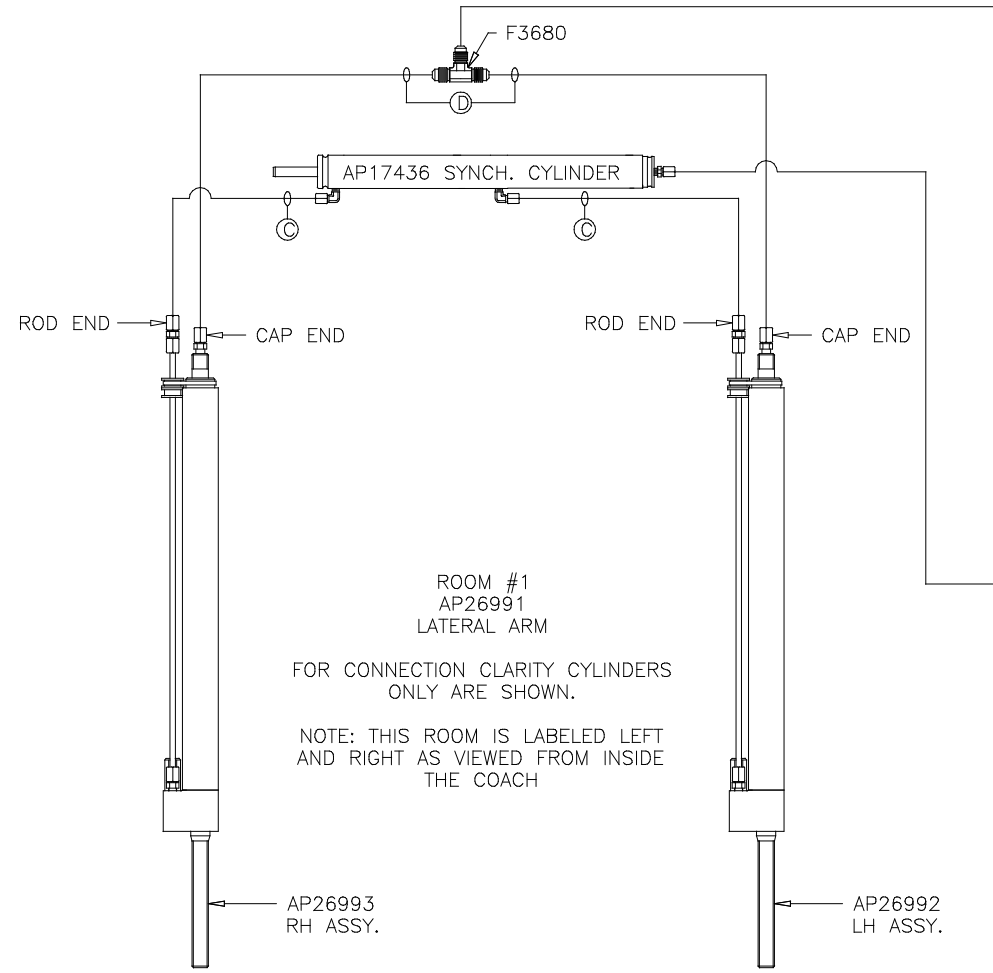
FORETRAVEL

DRAWING NUMBER  
 MP70560 A/D

ORIENTATION  
FRONT



- (A) AP4074 HOSE ASSY .25 x 108"  
WAS AP24632 HOSE ASSY HWH02HP x 48"  
ROD END - ALWAYS PRESSURIZED
- (B) AP7099 HOSE ASSY .25 x 110"  
WAS AP3314 HOSE ASSY .25 x 48"  
CAP END
- (C) AP24667 HOSE ASSY HWH02HP x 312"  
ROD END - ALWAYS PRESSURIZED - MUST  
BE HIGH PRESSURE HOSES OF EQUAL  
LENGTH AND DIAMETER
- (D) AP5216 HOSE ASSY .25 x 312"  
CAP END - MUST MAINTAIN EQUAL LENGTH  
AND DIAMETER
- (E) AP13851 HOSE ASSY .25" X 318"  
AP24667 HOSE ASSY HWH02HP x 312"  
ROD END - ALWAYS PRESSURIZED
- (F) AP5216 HOSE ASSY .25 x 312"  
CAP END

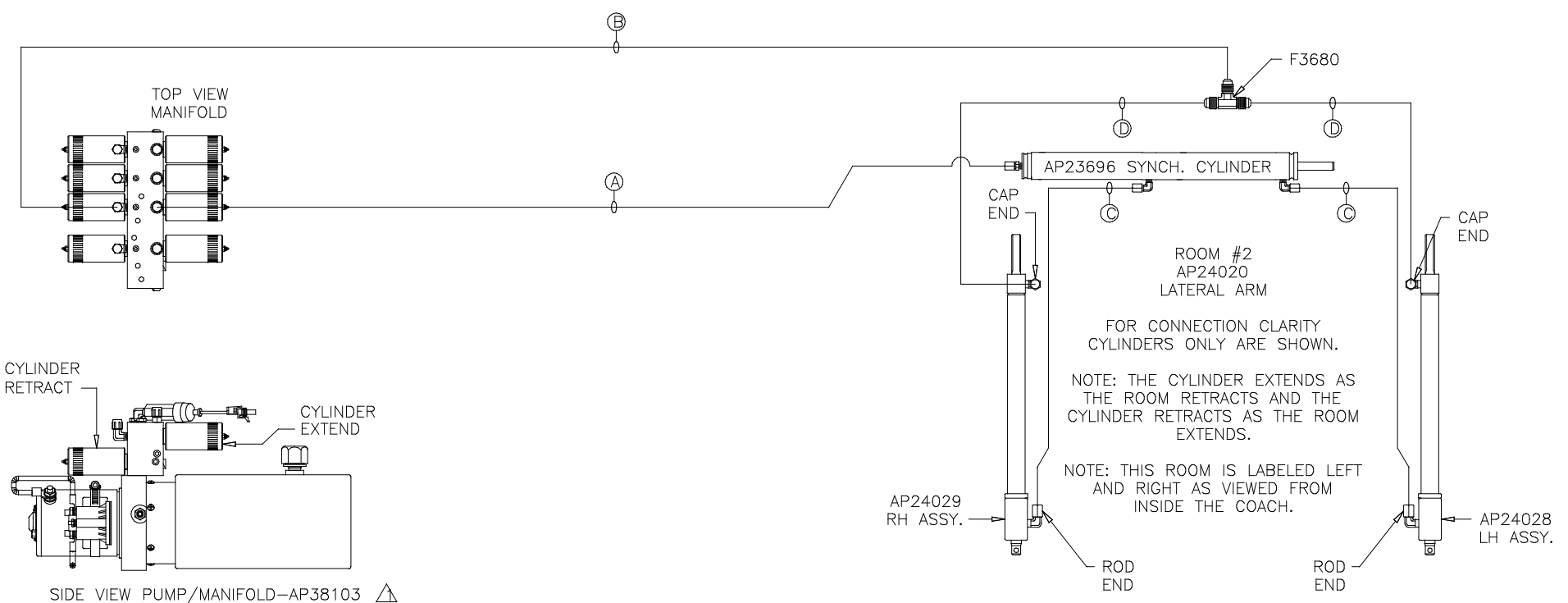


NOTE: INSTALLATION MUST CONFORM TO GOOD SHOP PRACTICES, SAE STANDARDS, RVIA STANDARDS, AND OTHER APPLICABLE STANDARDS.

ORIENTATION  
 ← FRONT

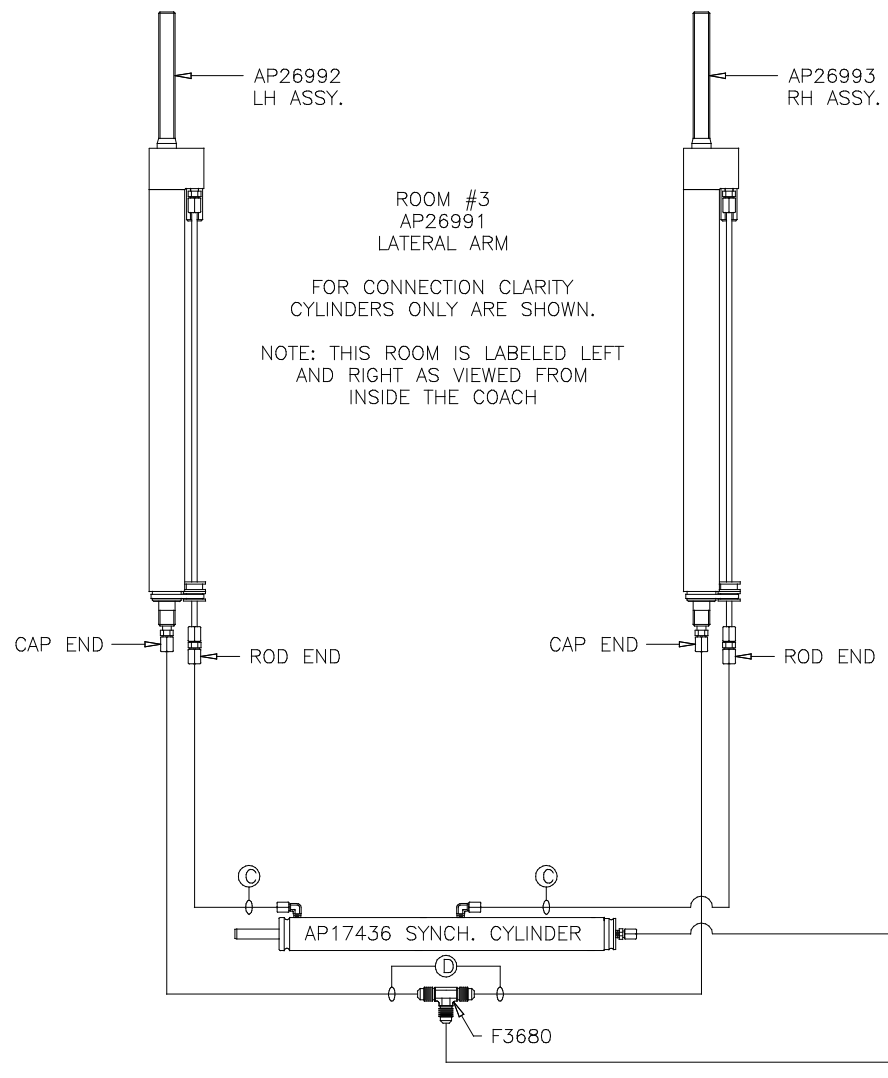
NOTE: HOSES ③ AND ④ ARE INCLUDED WITH THE ROOM EXTENSION MECHANISM

- ① AP4064 HOSE ASSY .25" X 300"  
 WAS AP24666 HOSE ASSY HWH02HP x 300"  
 ROD END - ALWAYS PRESSURIZED
- ② AP4904 HOSE ASSY .25" X 306"  
 WAS AP4064 HOSE ASSY .25 x 300"  
 CAP END
- ③ AP24632 HOSE ASSY HWH02HP x 48"  
 ROD END - ALWAYS PRESSURIZED - MUST  
 BE HIGH PRESSURE HOSES OF EQUAL  
 LENGTH AND DIAMETER
- ④ AP24632 HOSE ASSY HWH02HP x 48"  
 CAP END - MUST MAINTAIN EQUAL LENGTH  
 AND DIAMETER

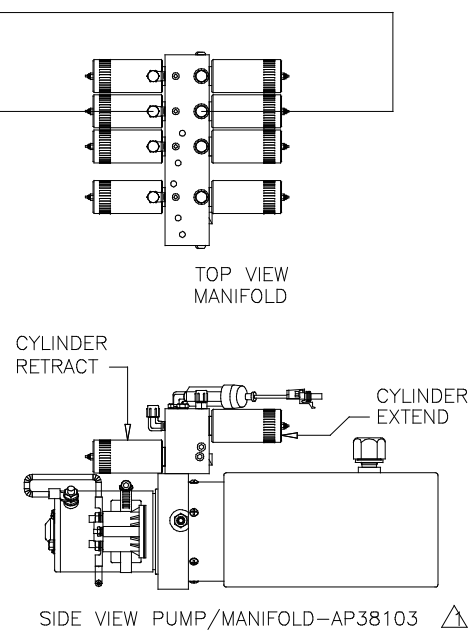


NOTE: INSTALLATION MUST CONFORM TO GOOD SHOP PRACTICES, SAE STANDARDS, RVIA STANDARDS, AND OTHER APPLICABLE STANDARDS.

ORIENTATION  
 ← FRONT



- Ⓐ AP4074 HOSE ASSY .25 x 108"  
 WAS AP24632 HOSE ASSY HWH02HP x 48"  
 ROD END - ALWAYS PRESSURIZED
- Ⓑ AP7099 HOSE ASSY .25 x 110"  
 WAS AP3314 HOSE ASSY .25 x 48"  
 CAP END
- Ⓒ AP24667 HOSE ASSY HWH02HP x 312"  
 ROD END - ALWAYS PRESSURIZED - MUST  
 BE HIGH PRESSURE HOSES OF EQUAL  
 LENGTH AND DIAMETER
- Ⓓ AP5216 HOSE ASSY .25 x 312"  
 CAP END - MUST MAINTAIN EQUAL  
 LENGTH AND DIAMETER



NOTE: INSTALLATION MUST CONFORM TO GOOD SHOP PRACTICES, SAE STANDARDS, RVIA STANDARDS, AND OTHER APPLICABLE STANDARDS.