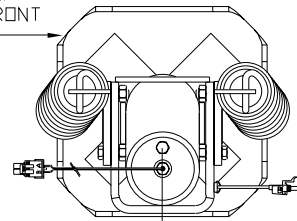


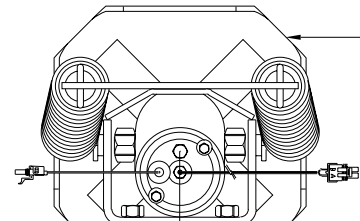
ORIENTATION

← FRONT

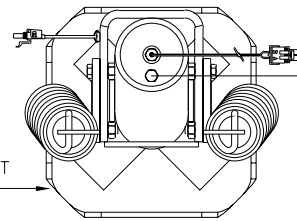
TOP VIEW
RIGHT FRONT
AP38147



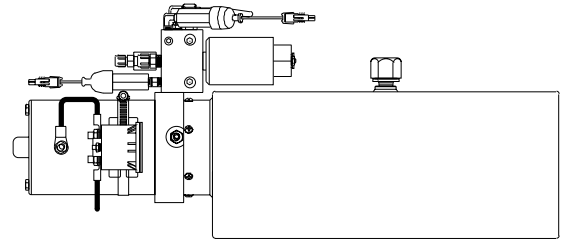
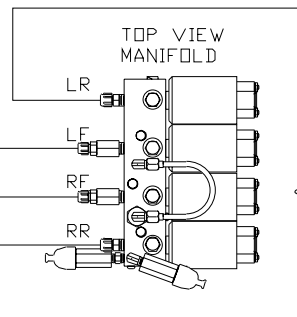
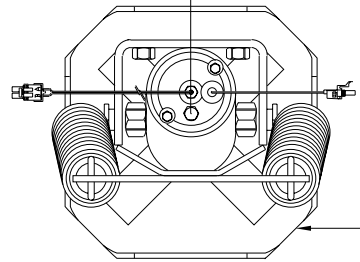
TOP VIEW
RIGHT REAR
AP37562



TOP VIEW
LEFT FRONT
AP38147



TOP VIEW
LEFT REAR
AP37562



SIDE VIEW PUMP/MANIFOLD-AP33805
LOCATION AND ORIENTATION OF PUMP/MANIFOLD ASSEMBLY MAY DIFFER DEPENDING UPON O.E.M.

- (A) AP6216 HOSE ASSY .25" x 264"
- (B) AP6216 HOSE ASSY .25" x 264"
- (C) AP1412 HOSE ASSY .25" x 84"
- (D) AP1412 HOSE ASSY .25" x 84"

CROSS-TIES REQUIRED FOR STRAIGHT-ACTING JACKS ON BOTH FRONT AND REAR.

NOTE: INSTALLATION MUST CONFORM TO GOOD SHOP PRACTICES, SAE STANDARDS, RVIA STANDARDS, AND OTHER APPLICABLE STANDARDS.

LEVELING SYSTEM: AP49346

NO.	DATE	REVISION
THE INFORMATION DISCLOSED ON THIS DRAWING IS CONFIDENTIAL AND MUST NOT BE DISCLOSED OR USED IN ANY MANNER WHICH WILL BE DETRIMENTAL TO THE HWH CORPORATION		

HWH I-80 EXIT 267 SOUTH
RT 1 MOSCOW, IOWA 52760

SCALE 1:6 DATE 15NOV11 DRAWN BY .

HYD CONN DIAGRAM

FRONTLINE DRAWING NUMBER MP70481