

ORIENTATION
FRONT

AP47883 JSCK HOSE KIT

- Ⓐ AP4162 HOSE ASSY .25" x 192" ROD END RIGHT FRONT JACK
- Ⓑ AP45367 HOSE ASSY .25/05 x 168" CAP END RIGHT FRONT JACK
- Ⓒ AP4062 HOSE ASSY .25" x 132" ROD END LEFT FRONT JACK
- Ⓓ AP43250 HOSE ASSY .25/05 x 120" CAP END LEFT FRONT JACK
- Ⓔ AP4164 HOSE ASSY .25" x 384" CAP END LEFT REAR JACK
- Ⓕ AP6218 HOSE ASSY .25" x 480" CAP END RIGHT REAR JACK
- Ⓖ AP4060 HOSE ASSY .25" x 24" PRESSURE
- Ⓗ P6602 RETURN LINE .5" x 24" RETURN

TOP VIEW
AP43998
RIGHT FRONT

TOP VIEW
AP43876
RIGHT REAR

TOP VIEW
AP43998
LEFT FRONT

TOP VIEW
AP43876
LEFT REAR

TOP VIEW
MANIFOLD

TOP VIEW
MANIFOLD
AP44758

CYLINDER
RETRACT

CYLINDER
EXTEND

SIDE VIEW PUMP/MANIFOLD-AP46592
LOCATION AND ORIENTATION OF
PUMP/MANIFOLD ASSEMBLY WILL
DIFFER DEPENDING UPON O.E.M.

NOTE: INSTALLATION MUST CONFORM TO GOOD SHOP PRACTICES, SAE STANDARDS, RVIA STANDARDS, AND OTHER APPLICABLE STANDARDS.

LEVELING SYSTEM: AP47657

1	02AUG12	ADDED HOSE KIT NUMBERS
NO.	DATE	REVISION

HWH I-80 EXIT 267 SOUTH
RT 1 MOSCOW, IOWA 52760
SCALE 1:6 DATE 31JAN11 DRAWN BY .

HYD CONN DIAGRAM

ROLLINGSTAR DRAWING NUMBER
MP70370 A/B

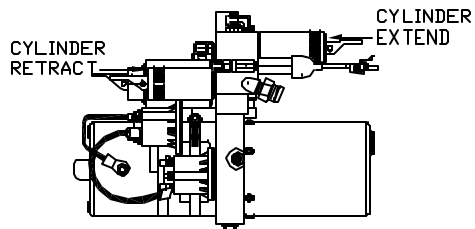
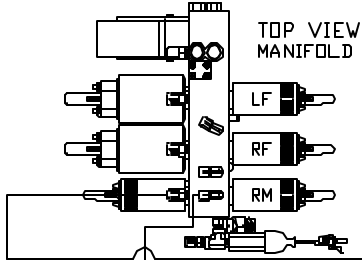
THE INFORMATION DISCLOSED ON THIS DRAWING IS CONFIDENTIAL AND MUST NOT BE DISCLOSED OR USED IN ANY MANNER WHICH WILL BE DETRIMENTAL TO THE HWH CORPORATION

AP47884 HOSE KIT 1RM

- Ⓐ AP4064 HOSE ASSY 25' x 300' ROD END - ALWAYS PRESSURIZED
- Ⓑ AP5561 HOSE ASSY .25" x 336" CAP END (ROOM)
- Ⓒ AP4158 HOSE ASSY .25" x 12' ROD END - ALWAYS PRESSURIZED (LIFT)
- Ⓓ AP4161 HOSE ASSY .25" x 120' CAP END (ROOM)
- Ⓔ AP4158 HOSE ASSY .25" x 12' CAP END (LIFT)
- Ⓕ AP4161 HOSE ASSY .25" x 120' CAP END (ROOM)

NOTE: HOSES Ⓘ AND Ⓧ ARE INCLUDED WITH THE ROOM EXTENSION MECHANISM

- Ⓖ AP24645 HOSE ASSY HWH02HP x 144' ROD END - ALWAYS PRESSURIZED HOSES MUST BE HIGH PRESSURE HOSES OF EQUAL LENGTH AND DIAMETER
- Ⓛ AP4827 HOSE ASSY .25" x 144' CAP END - HOSES MUST MAINTAIN EQUAL LENGTH AND DIAMETER
- Ⓜ AP24632 HOSE ASSY HWH02HP x 48' ROD END - ALWAYS PRESSURIZED - MUST BE HIGH PRESSURE HOSES OF EQUAL LENGTH AND DIAMETER
- Ⓨ AP24818 HOSE ASSY HWH02HP x 86' CAP END - MUST MAINTAIN EQUAL LENGTH AND DIAMETER
- Ⓩ AP4074 HOSE ASSY .25" x 108" CAP END (LIFT) MUST MAINTAIN EQUAL LENGTH AND DIAMETER
- ⓐ AP4062 HOSE ASSY .25" x 132" ROD END (LIFT) ALWAYS PRESSURIZED - MUST MAINTAIN EQUAL LENGTH AND DIAMETER



LOCATION AND ORIENTATION OF PUMP/MANIFOLD ASSEMBLY WILL DIFFER DEPENDING UPON O.E.M.

CYL ASSY (PART OF AP47850 PLATFORM ASSY.)

NOTE: GENERIC VIEWS FOR CLARITY. CYLINDERS MAY BE REVERSED

NOTE: INSTALLATION MUST CONFORM TO GOOD SHOP PRACTICES, SAE STANDARDS, RVIA STANDARDS, AND OTHER APPLICABLE STANDARDS.

