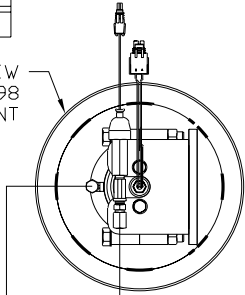


ORIENTATION

← FRONT

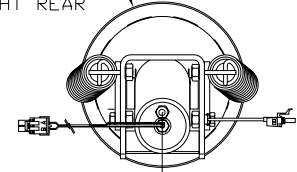
TOP VIEW
AP43998
RIGHT FRONT



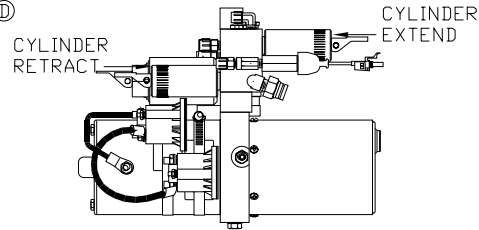
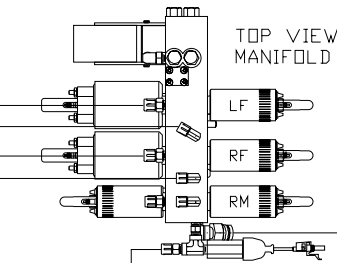
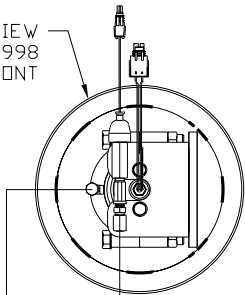
- (A) HOSE ASSY .25" ID
ROD END RIGHT FRONT JACK
- (B) HOSE ASSY .25/05
CAP END RIGHT FRONT JACK
- (C) HOSE ASSY .25" ID
ROD END LEFT FRONT JACK
- (D) HOSE ASSY .25/05
CAP END LEFT FRONT JACK

- (E) HOSE ASSY .25" ID
CAP END LEFT REAR JACK
- (F) HOSE ASSY .25" ID
CAP END RIGHT REAR JACK
- (G) HOSE ASSY .25" ID
PRESSURE
- (H) RETURN LINE .5"
RETURN

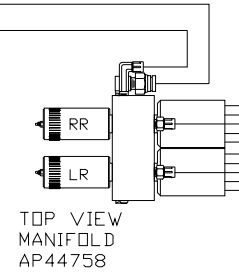
TOP VIEW
AP43876
RIGHT REAR



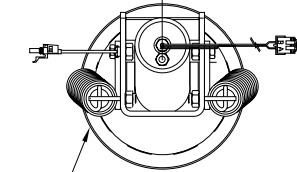
TOP VIEW
AP43998
LEFT FRONT



LOCATION AND ORIENTATION OF
PUMP/MANIFOLD ASSEMBLY WILL
DIFFER DEPENDING UPON O.E.M.



TOP VIEW
AP43876
LEFT REAR



NOTE: INSTALLATION MUST CONFORM TO GOOD SHOP PRACTICES, SAE STANDARDS, RVIA STANDARDS, AND OTHER APPLICABLE STANDARDS. LEVELING SYSTEM: AP46529

		HWH		I-80 EXIT 267 SOUTH RT 1 MOSCOW, IOWA 52760	
		SCALE 1:6	DATE 04MAY10	DRAWN BY .	
		HYD CONN DIAGRAM			
		ROLLINGSTAR		DRAWING NUMBER MP70270 A/B	
NO.	DATE	REVISION			
THE INFORMATION DISCLOSED ON THIS DRAWING IS CONFIDENTIAL AND MUST NOT BE DISCLOSED OR USED IN ANY MANNER WHICH WILL BE DETRIMENTAL TO THE HWH CORPORATION					

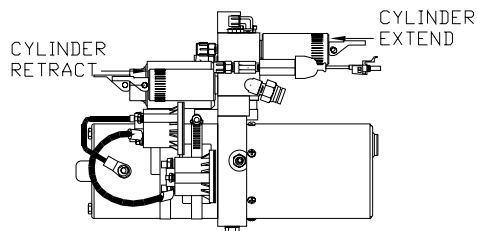
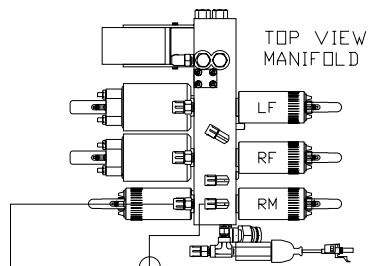
ORIENTATION



NOTE: HOSES ① AND ② ARE INCLUDED WITH THE ROOM EXTENSION MECHANISM

- Ⓐ .25" ID HOSE ASSY
ROD END - ALWAYS PRESSURIZED
- Ⓑ .25" ID HOSE ASSY
CAP END (ROOM)
- Ⓒ .25" ID HOSE ASSY
ROD END - ALWAYS PRESSURIZED (LIFT)
- Ⓓ .25" ID HOSE ASSY
CAP END (ROOM)
- Ⓔ .25" ID HOSE ASSY
CAP END (LIFT)
- Ⓕ .25" ID HOSE ASSY
CAP END (ROOM)

- Ⓖ .125" ID HIGH PRESSURE HOSE ASSY
ROD END - ALWAYS PRESSURIZED
HOSES MUST BE HIGH PRESSURE
HOSES OF EQUAL LENGTH AND DIAMETER
- Ⓗ .25" ID HOSE ASSY
CAP END - HOSES MUST MAINTAIN
EQUAL LENGTH AND DIAMETER
- ① AP24632 HOSE ASSY HWH02HP x 48"
ROD END - ALWAYS PRESSURIZED -
MUST BE HIGH PRESSURE HOSES OF
EQUAL LENGTH AND DIAMETER
- ② AP24818 HOSE ASSY HWH02HP x 86"
CAP END - MUST MAINTAIN EQUAL
LENGTH AND DIAMETER
- Ⓚ .25" ID HOSE ASSY CAP END (LIFT)
MUST MAINTAIN EQUAL LENGTH
AND DIAMETER
- Ⓛ .25" ID HOSE ASSY ROD END (LIFT)
ALWAYS PRESSURIZED - MUST MAINTAIN
EQUAL LENGTH AND DIAMETER



SIDE VIEW PUMP/MANIFOLD-AP46592

LOCATION AND ORIENTATION OF
PUMP/MANIFOLD ASSEMBLY WILL
DIFFER DEPENDING UPON O.E.M.

CYL ASSY
(PART OF AP46612
PLATFORM ASSY.)

NOTE: GENERIC VIEWS FOR CLARITY. CYLINDERS MAY BE REVERSED

NOTE: INSTALLATION MUST CONFORM TO GOOD SHOP PRACTICES, SAE
STANDARDS, RVIA STANDARDS, AND OTHER APPLICABLE STANDARDS.

