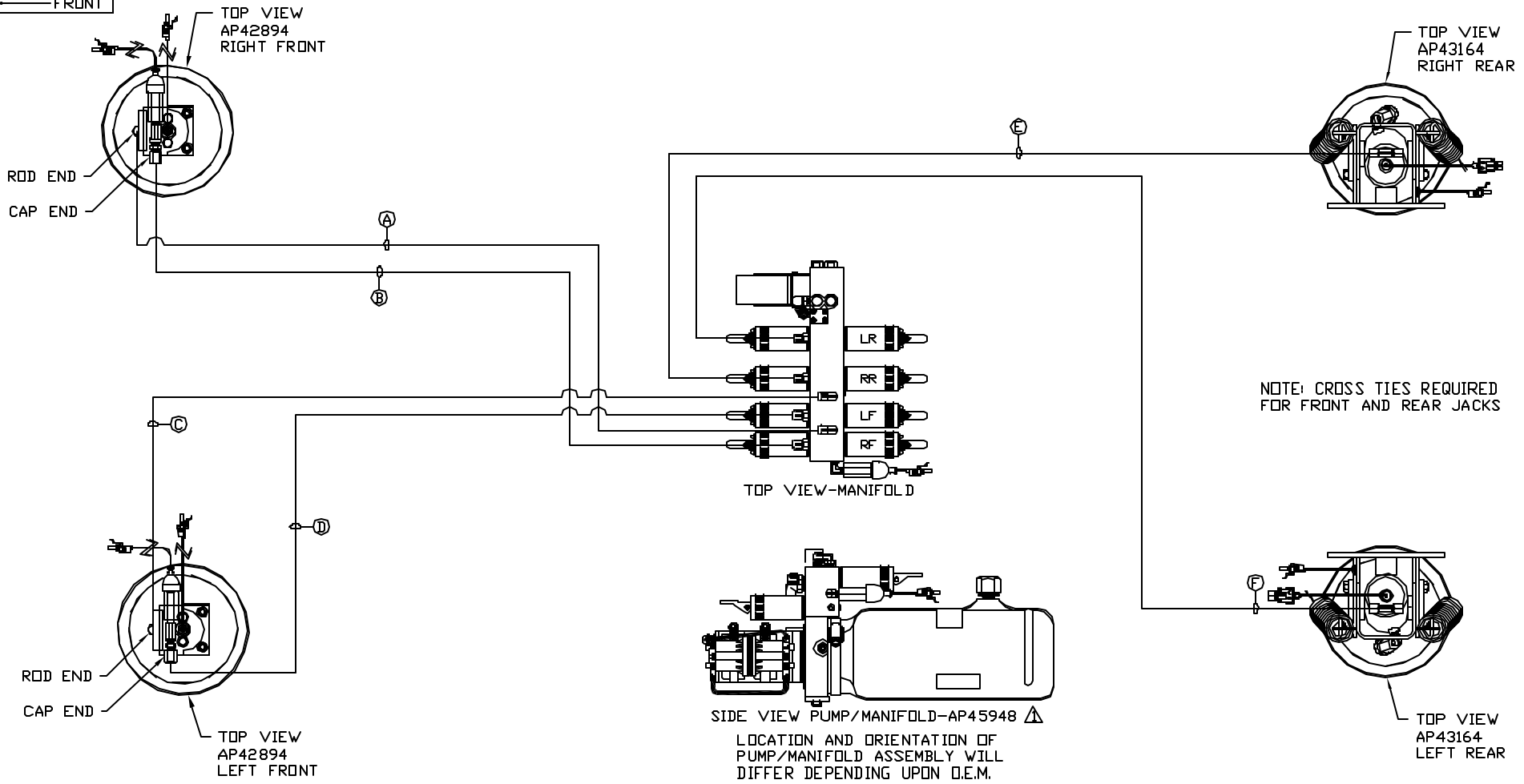


ORIENTATION
 FRONT



- Ⓐ AP4061 HOSE ASSY .25' x 216' - RF ROD END
- Ⓑ AP45368 HOSE ASSY .25/05 x 216' - RF CAP END
- Ⓒ AP6115 HOSE ASSY .25' x 168' - LF ROD END
- Ⓓ AP45367 HOSE ASSY .25' x 168' - RF CAP END
- Ⓔ AP6217 HOSE ASSY .25' x 456' - RR CAP END
- Ⓕ AP4163 HOSE ASSY .25' x 360' - LR CAP END

NOTE: INSTALLATION MUST CONFORM TO GOOD SHOP PRACTICES, SAE STANDARDS, RVIA STANDARDS, AND OTHER APPLICABLE STANDARDS.

LEVELING SYSTEM: AP43630

⚠	26JUL12	WAS AP43063, AD'D HOSES
NO.	DATE	REVISION
THE INFORMATION DISCLOSED ON THIS DRAWING IS CONFIDENTIAL AND MUST NOT BE DISCLOSED OR USED IN ANY MANNER WHICH WILL BE DETRIMENTAL TO THE HWH CORPORATION		

HWH		I-80 EXIT 267 SOUTH RT 1 MOSCOW, IDWA 52760	
SCALE 1:6	DATE 05NOV08	DRAWN BY .	
HYD CONN DIAGRAM			
ROLLING STAR			DRAWING NUMBER MP70065