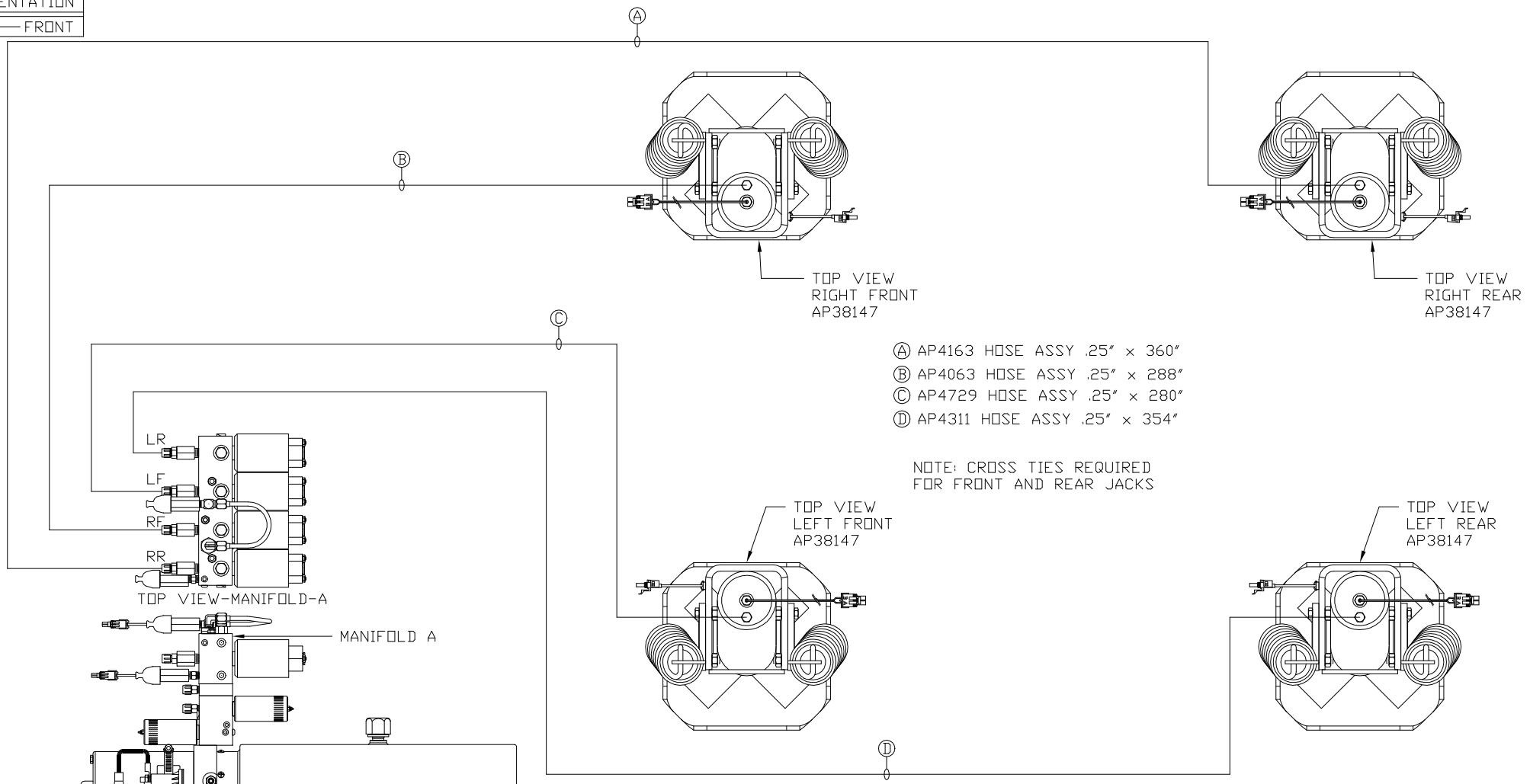


ORIENTATION  
 ← FRONT



- Ⓐ AP4163 HOSE ASSY .25" x 360"
- Ⓑ AP4063 HOSE ASSY .25" x 288"
- Ⓒ AP4729 HOSE ASSY .25" x 280"
- Ⓓ AP4311 HOSE ASSY .25" x 354"

NOTE: CROSS TIES REQUIRED FOR FRONT AND REAR JACKS

SIDE VIEW PUMP/MANIFOLD-AP42307  
 LOCATION AND ORIENTATION OF PUMP/MANIFOLD ASSEMBLY WILL DIFFER DEPENDING UPON O.E.M.

NOTE: INSTALLATION MUST CONFORM TO GOOD SHOP PRACTICES, SAE STANDARDS, RVIA STANDARDS, AND OTHER APPLICABLE STANDARDS.

LEVELING SYSTEM: AP42282

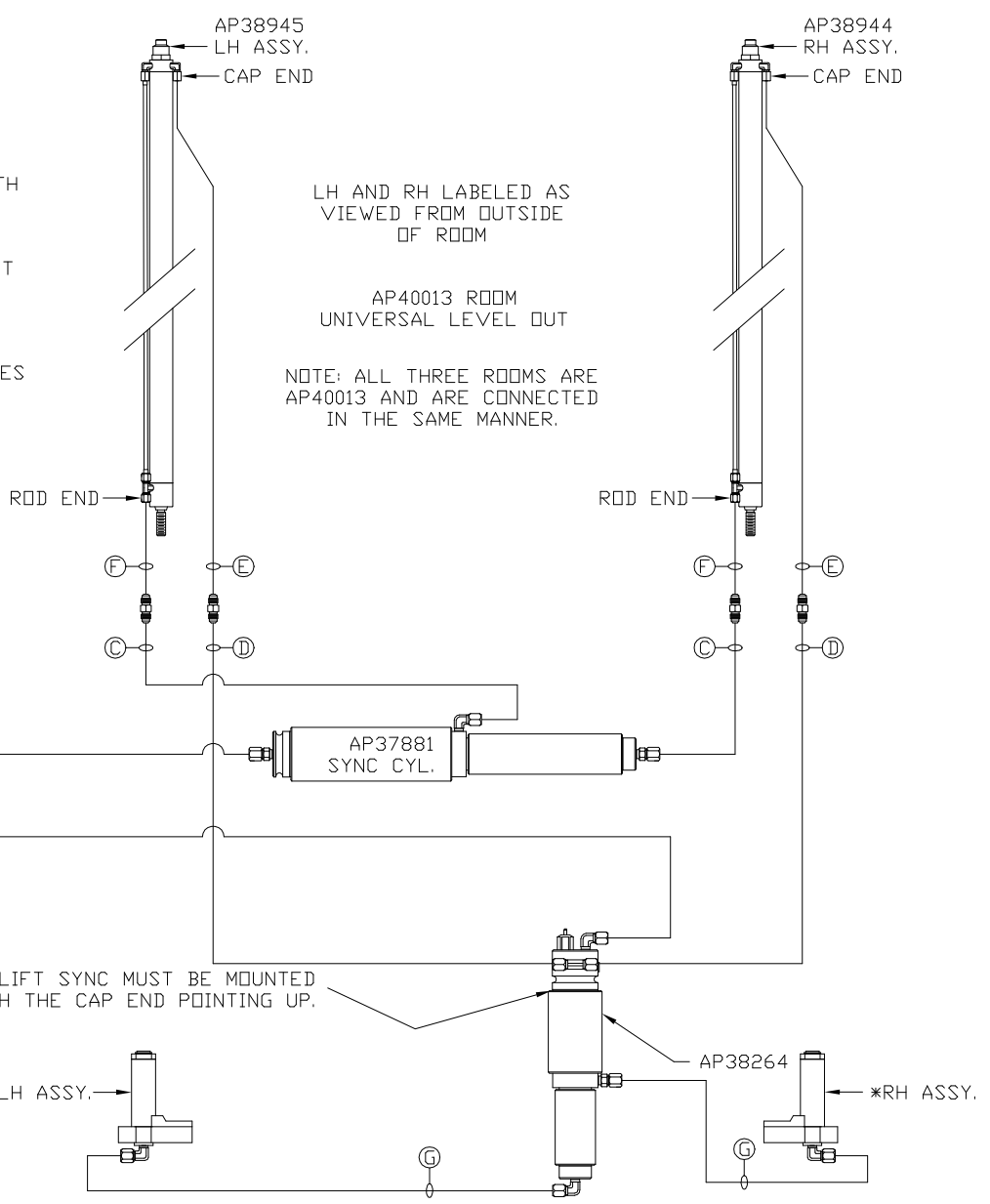
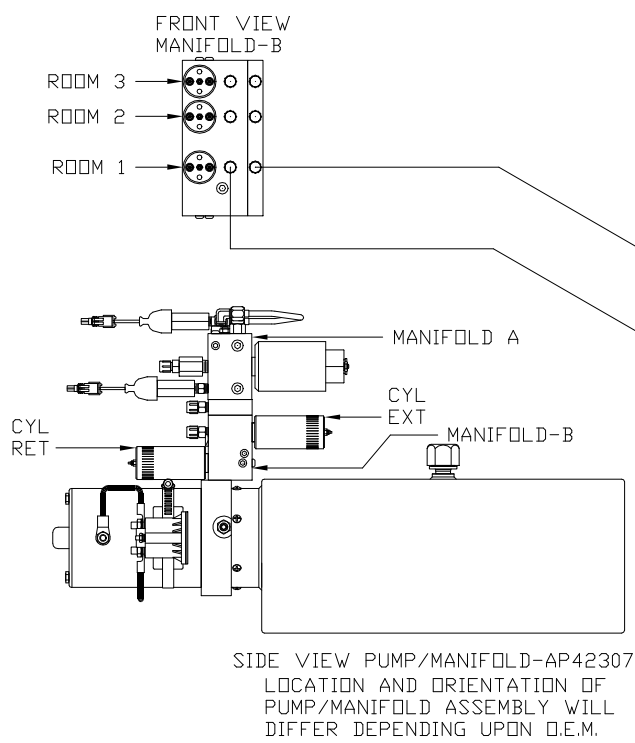
NO.	DATE	REVISION
THE INFORMATION DISCLOSED ON THIS DRAWING IS CONFIDENTIAL AND MUST NOT BE DISCLOSED OR USED IN ANY MANNER WHICH WILL BE DETRIMENTAL TO THE HWH CORPORATION		

<b>HWH</b>		I-80 EXIT 267 SOUTH RT 1 MOSCOW, IOWA 52760	
SCALE 1:6	DATE 29FEB08	DRAWN BY .	
<b>HYD CONN DIAGRAM</b>			
<b>LIFELINE</b>		DRAWING NUMBER MP69966 A/B	

**ORIENTATION**  
 ← FRONT

- \*: PART OF THE ROOM EXTENSION MECHANISM.
- (A) .25" ID HOSE  
ROD END - ALWAYS PRESSURIZED
  - (B) .25" ID HOSE  
CAP END
  - (C) .125" ID HOSE  
ROD END - ALWAYS PRESSURIZED - MUST BE HIGH PRESSURE HOSES OF EQUAL LENGTH AND DIAMETER
  - (D) .125" ID HOSE  
CAP END - MUST MAINTAIN EQUAL LENGTH AND DIAMETER

- NOTE: HOSES (E) AND (F) ARE INCLUDED WITH THE ROOM EXTENSION MECHANISM.
- (E) AP24818 HOSE ASSY HWH02HP x 86"  
CAP END - MUST MAINTAIN EQUAL LENGTH AND DIAMETER
  - (F) AP24632 HOSE ASSY HWH02HP x 48"  
ROD END - ALWAYS PRESSURIZED - MUST BE HIGH PRESSURE HOSES OF EQUAL LENGTH AND DIAMETER
  - (G) .125" ID HOSE  
CAP END - MUST BE HIGH PRESSURE HOSES OF EQUAL LENGTH AND DIAMETER



NOTE: INSTALLATION MUST CONFORM TO GOOD SHOP PRACTICES, SAE STANDARDS, RVIA STANDARDS, AND OTHER APPLICABLE STANDARDS.