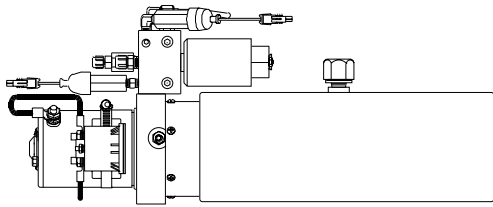
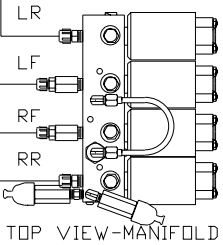
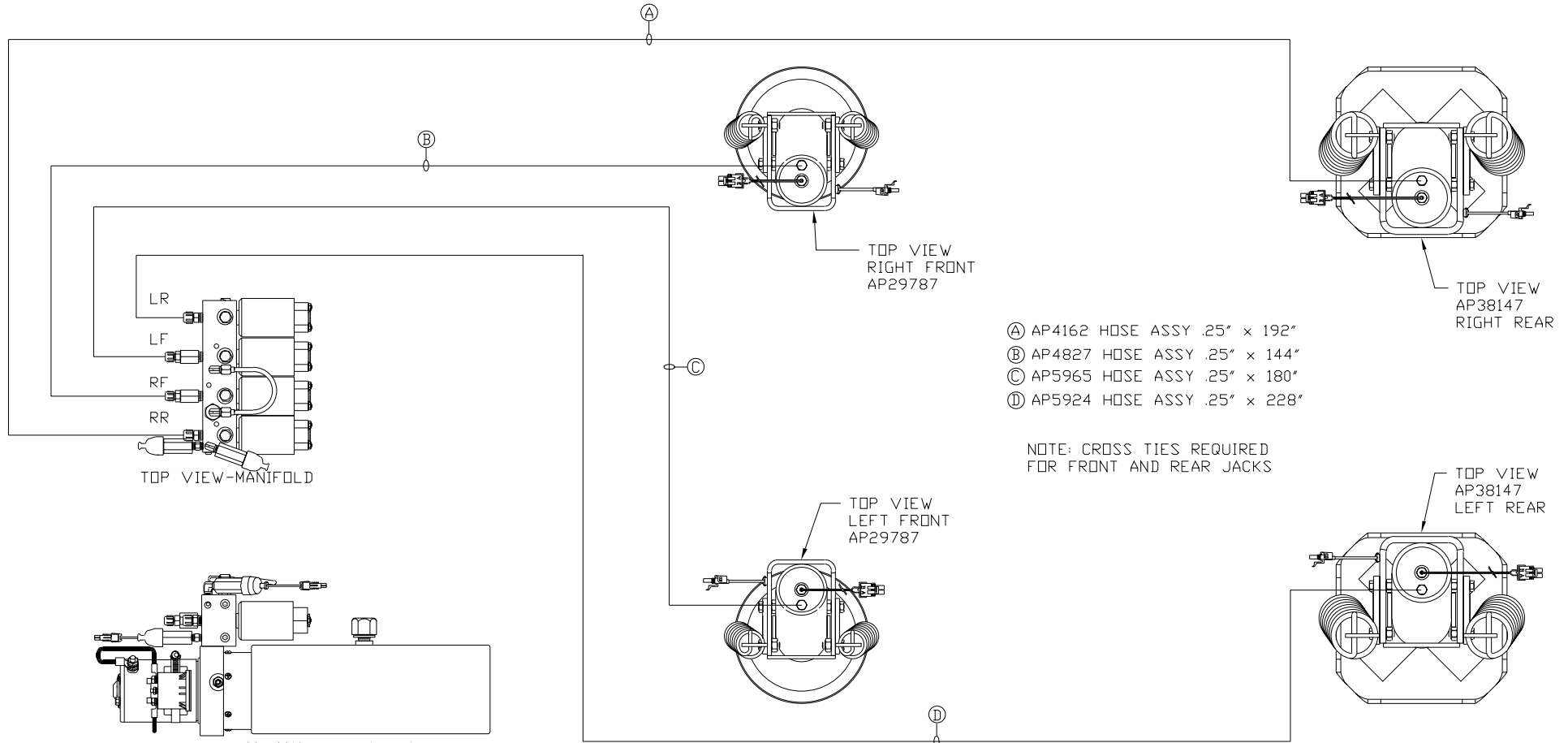


ORIENTATION

← FRONT



LOCATION AND ORIENTATION OF
PUMP/MANIFOLD ASSEMBLY WILL
DIFFER DEPENDING UPON O.E.M.

TOP VIEW
RIGHT FRONT
AP29787

TOP VIEW
AP38147
RIGHT REAR

- Ⓐ AP4162 HOSE ASSY .25" x 192"
- Ⓑ AP4827 HOSE ASSY .25" x 144"
- Ⓒ AP5965 HOSE ASSY .25" x 180"
- Ⓓ AP5924 HOSE ASSY .25" x 228"

NOTE: CROSS TIES REQUIRED
FOR FRONT AND REAR JACKS

TOP VIEW
LEFT FRONT
AP29787

TOP VIEW
AP38147
LEFT REAR

NOTE: INSTALLATION MUST CONFORM TO GOOD SHOP PRACTICES, SAE STANDARDS, RVIA STANDARDS, AND OTHER APPLICABLE STANDARDS.

LEVELING SYSTEM: AP41335

			HWH	I-80 EXIT 267 SOUTH RT 1 MOSCOW, IOWA 52760
			SCALE 1:6	DATE 31AUG07
			DRAWN BY .	
			HYD CONN DIAGRAM	
			SVI TRUCKS	DRAWING NUMBER MP69882
NO.	DATE	REVISION	THE INFORMATION DISCLOSED ON THIS DRAWING IS CONFIDENTIAL AND MUST NOT BE DISCLOSED OR USED IN ANY MANNER WHICH WILL BE DETRIMENTAL TO THE HWH CORPORATION	