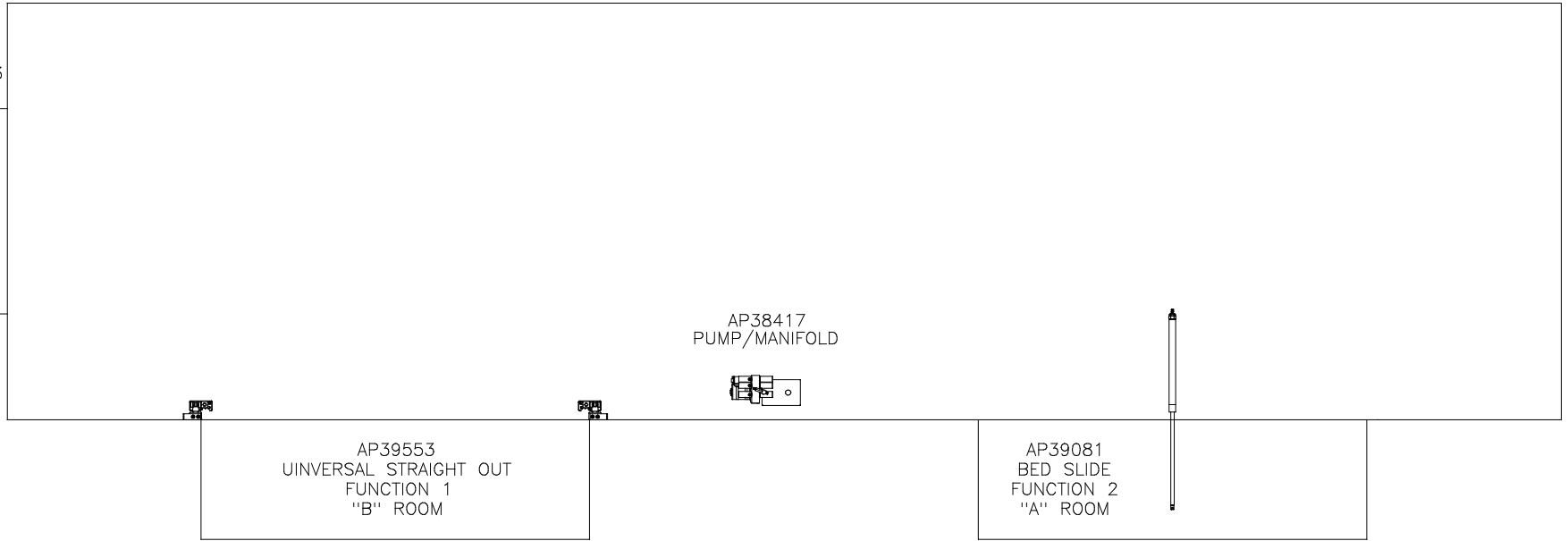


ORIENTATION
 ← FRONT

GEN SLIDE
 FUNCTION 3
 "A" ROOM



AP39553
 UNIVERSAL STRAIGHT OUT
 FUNCTION 1
 "B" ROOM

AP38417
 PUMP/MANIFOLD

AP39081
 BED SLIDE
 FUNCTION 2
 "A" ROOM

NO.	DATE	REVISION
1	24JUL12	UPDATED HOSES

HWH 1-80 EXIT 267 SOUTH
 RT 1 MOSCOW, IOWA 52760
 SCALE 1:6 DATE 12APR07 DRAWN BY .

HYD CONN DIAGRAM

THE INFORMATION DISCLOSED ON THIS DRAWING IS CONFIDENTIAL AND MUST NOT BE DISCLOSED OR USED IN ANY MANNER WHICH WILL BE DETRIMENTAL TO THE HWH CORPORATION

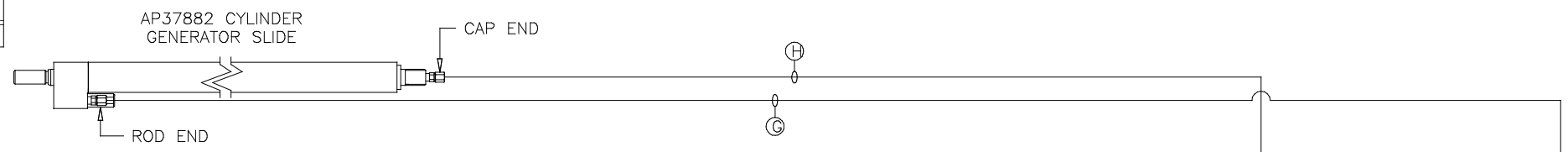
FORETRAVEL

DRAWING NUMBER
 MP69768 A/C

NOTE: INSTALLATION MUST CONFORM TO GOOD SHOP PRACTICES, SAE STANDARDS, RVIA STANDARDS, AND OTHER APPLICABLE STANDARDS.

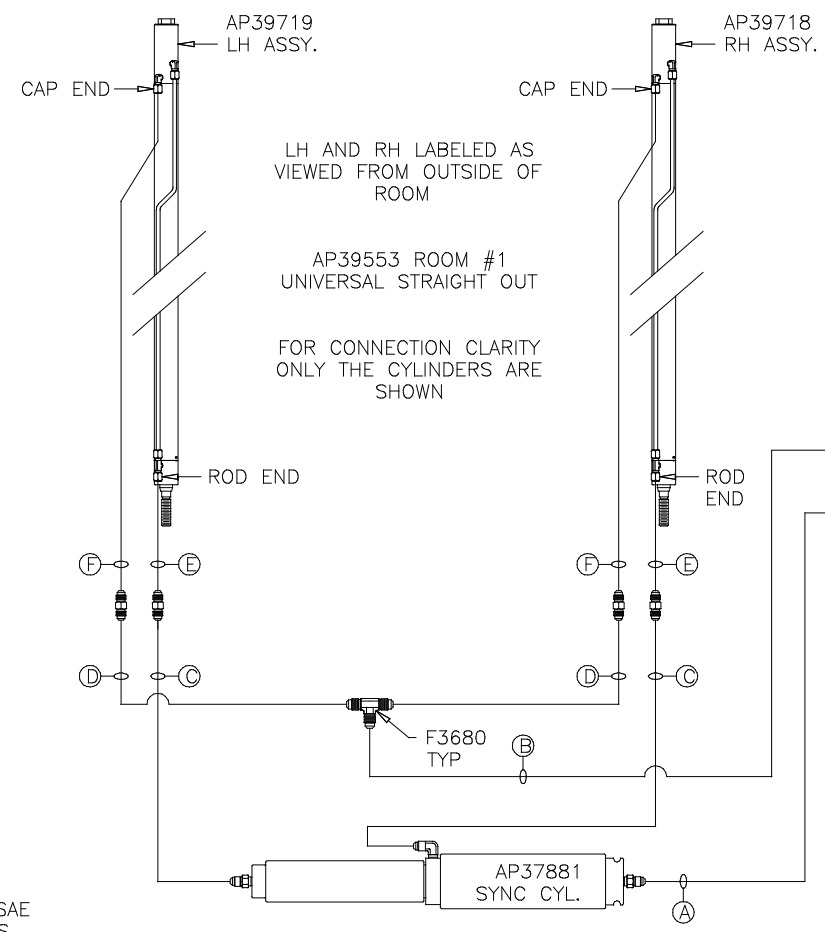
LEVELING SYSTEM: AP40132

ORIENTATION
 ← FRONT



NOTE: HOSES E and F ARE INCLUDED WITH THE ROOM EXTENSION MECHANISM

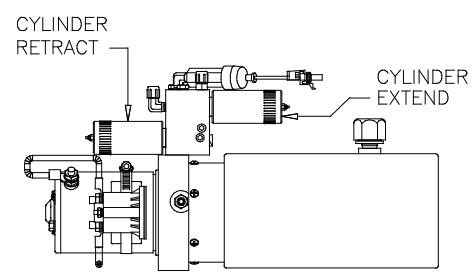
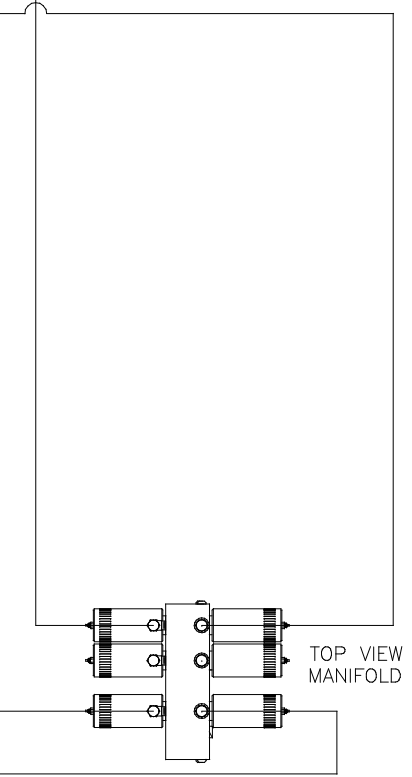
- A AP4074 HOSE ASSY .25 x 108"
 WAS AP24632 HOSE ASSY HWH02HP x 48"
 ROD END - ALWAYS PRESSURIZED
- B AP7099 HOSE ASSY .25 x 110"
 WAS AP3314 HOSE ASSY .25 x 48"
 CAP END
- C AP24667 HOSE ASSY HWH02HP x 312"
 ROD END - ALWAYS PRESSURIZED - MUST BE HIGH PRESSURE HOSES OF EQUAL LENGTH AND DIAMETER
- D AP5216 HOSE ASSY .25 x 312"
 CAP END - MUST MAINTAIN EQUAL LENGTH AND DIAMETER
- E AP24632 HOSE ASSY HWH02HP x 48"
 ROD END - ALWAYS PRESSURIZED - MUST BE HIGH PRESSURE HOSES OF EQUAL LENGTH AND DIAMETER
- F AP24818 HOSE ASSY HWH02HP x 86"
 CAP END - MUST MAINTAIN EQUAL LENGTH AND DIAMETER
- G AP13851 HOSE ASSY .25 x 318"
 WAS AP24667 HOSE ASSY HWH02HP x 312"
 ROD END - ALWAYS PRESSURIZED
- H AP5216 HOSE ASSY .25 x 312"
 WAS AP24673 HOSE ASSY HWH02HP x 384"
 CAP END



LH AND RH LABELED AS VIEWED FROM OUTSIDE OF ROOM

AP39553 ROOM #1 UNIVERSAL STRAIGHT OUT

FOR CONNECTION CLARITY ONLY THE CYLINDERS ARE SHOWN

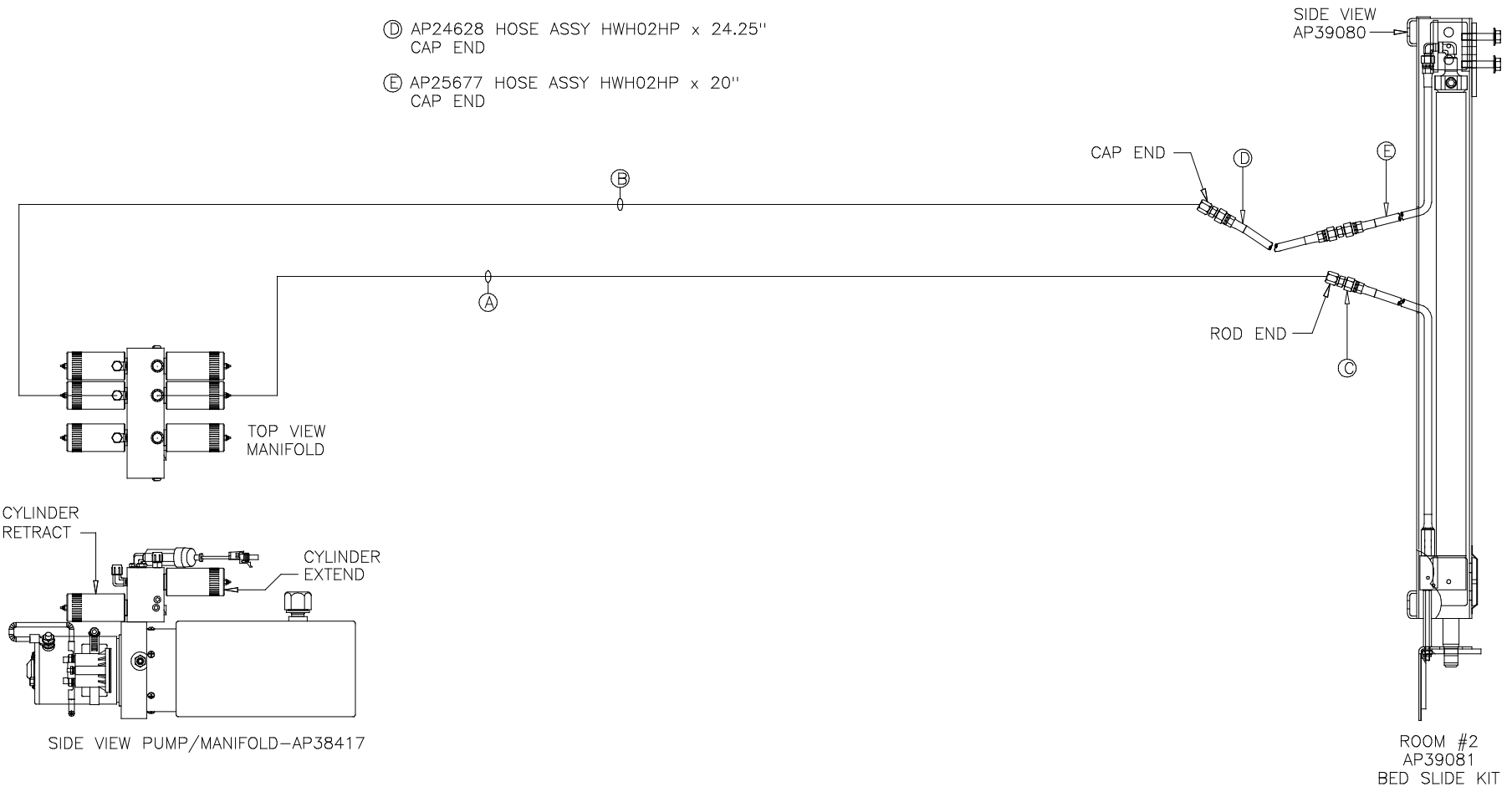


NOTE: INSTALLATION MUST CONFORM TO GOOD SHOP PRACTICES, SAE STANDARDS, RVIA STANDARDS, AND OTHER APPLICABLE STANDARDS.

ORIENTATION
 ← FRONT

NOTE: HOSES ③, ④ AND ⑤ ARE INCLUDED WITH THE ROOM EXTENSION MECHANISM

- ① AP4904 HOSE ASSY .25 x 306"
 WAS AP24666 HOSE ASSY HWH02HP x 300"
 ROD END - ALWAYS PRESSURIZED
- ② AP4064 HOSE ASSY .25 x 300"
 CAP END
- ③ AP24632 HOSE ASSY HWH02HP x 48"
 ROD END - ALWAYS PRESSURIZED
- ④ AP24628 HOSE ASSY HWH02HP x 24.25"
 CAP END
- ⑤ AP25677 HOSE ASSY HWH02HP x 20"
 CAP END



NOTE: INSTALLATION MUST CONFORM TO GOOD SHOP PRACTICES, SAE STANDARDS, RVIA STANDARDS, AND OTHER APPLICABLE STANDARDS.