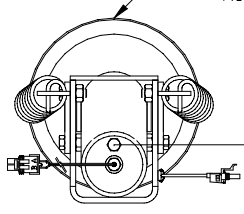
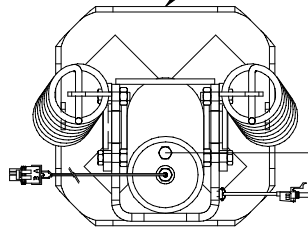


ORIENTATION
FRONT

TOP VIEW
AP29787
RIGHT FRONT



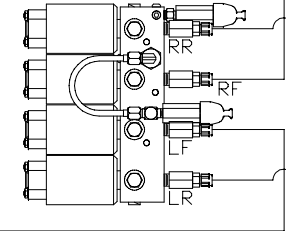
TOP VIEW
AP38147
RIGHT REAR



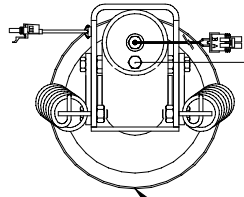
- Ⓐ AP7179 HOSE ASSY .25" x 440"
- Ⓑ AP6117 HOSE ASSY .25" x 432"
- Ⓒ AP4162 HOSE ASSY .25" x 192"
- Ⓓ AP5965 HOSE ASSY .25" x 180"

CROSS TIES REQUIRED FOR
FRONT AND REAR JACKS

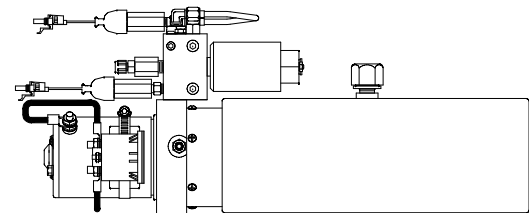
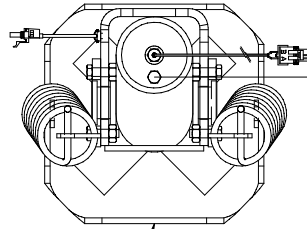
TOP VIEW
MANIFOLD



TOP VIEW
AP29787
LEFT FRONT



TOP VIEW
AP38147
LEFT REAR



SIDE VIEW PUMP/MANIFOLD-AP36195

ORIENTATION OF POWER UNIT IS GLASS NORTH

NOTE: INSTALLATION MUST CONFORM TO GOOD SHOP PRACTICES, SAE STANDARDS, RVIA STANDARDS, AND OTHER APPLICABLE STANDARDS.

LEVELING SYSTEM: AP40120

1	11APR07	ADDED INSTALLATION NOTE
NO.	DATE	REVISION
THE INFORMATION DISCLOSED ON THIS DRAWING IS CONFIDENTIAL AND MUST NOT BE DISCLOSED OR USED IN ANY MANNER WHICH WILL BE DETRIMENTAL TO THE HWH CORPORATION		

HWH		I-80 EXIT 267 SOUTH RT 1 MOSCOW, IOWA 52760	
SCALE 1:6	DATE 21FEB07	DRAWN BY .	
HYD CONN DIAGRAM			
MATTHEWS			DRAWING NUMBER MP69765