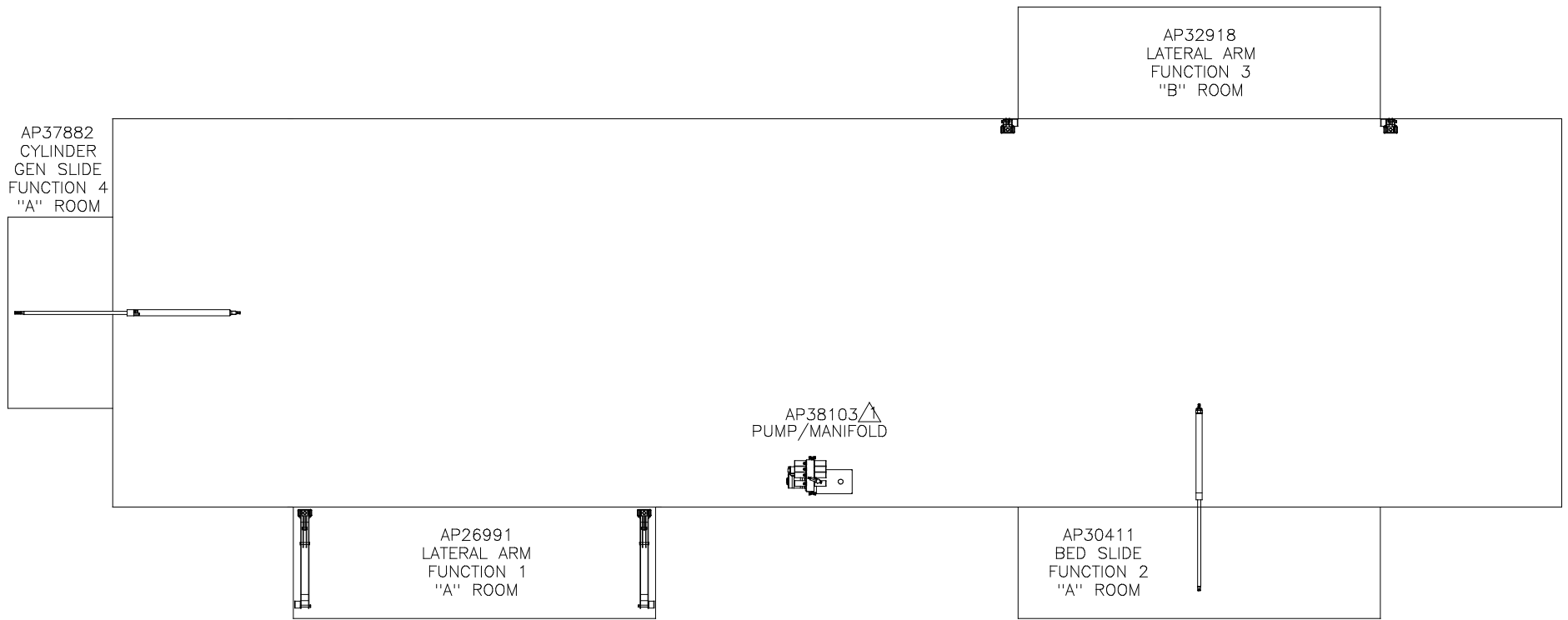


ORIENTATION
 ← FRONT



2	20SEP13	UPDATED HOSES
△	25AUG06	WAS AP34209
NO.	DATE	REVISION

HWH		I-80 EXIT 267 SOUTH RT 1 MOSCOW, IOWA 52760	
SCALE 1:6	DATE 17APR06	DRAWN BY .	
HYD CONN DIAGRAM			

NOTE: INSTALLATION MUST CONFORM TO GOOD SHOP PRACTICES, SAE STANDARDS, RVIA STANDARDS, AND OTHER APPLICABLE STANDARDS.

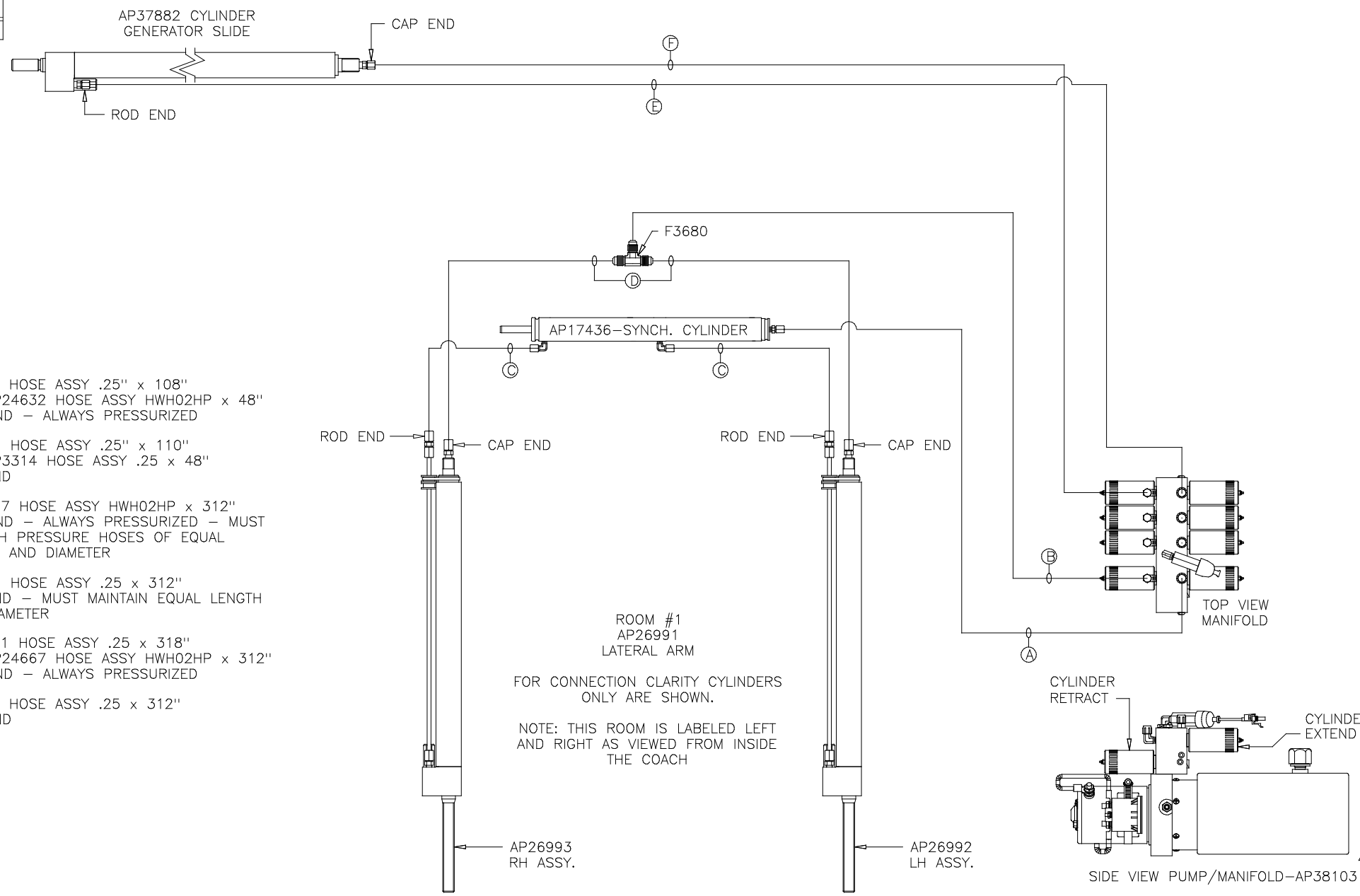
LEVELING SYSTEM: AP37802

THE INFORMATION DISCLOSED ON THIS DRAWING IS CONFIDENTIAL AND MUST NOT BE DISCLOSED OR USED IN ANY MANNER WHICH WILL BE DETRIMENTAL TO THE HWH CORPORATION

FORETRAVEL

DRAWING NUMBER
MP69577 A/D

ORIENTATION
 ← FRONT

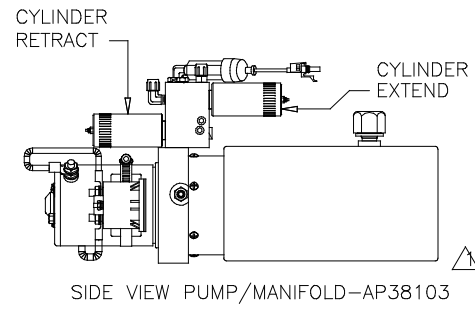


- (A) AP4074 HOSE ASSY .25" x 108"
 WAS AP24632 HOSE ASSY HWH02HP x 48"
 ROD END - ALWAYS PRESSURIZED
- (B) AP7099 HOSE ASSY .25" x 110"
 WAS AP3314 HOSE ASSY .25 x 48"
 CAP END
- (C) AP24667 HOSE ASSY HWH02HP x 312"
 ROD END - ALWAYS PRESSURIZED - MUST
 BE HIGH PRESSURE HOSES OF EQUAL
 LENGTH AND DIAMETER
- (D) AP5216 HOSE ASSY .25 x 312"
 CAP END - MUST MAINTAIN EQUAL LENGTH
 AND DIAMETER
- (E) AP13851 HOSE ASSY .25 x 318"
 WAS AP24667 HOSE ASSY HWH02HP x 312"
 ROD END - ALWAYS PRESSURIZED
- (F) AP5216 HOSE ASSY .25 x 312"
 CAP END

ROOM #1
 AP26991
 LATERAL ARM

FOR CONNECTION CLARITY CYLINDERS
 ONLY ARE SHOWN.

NOTE: THIS ROOM IS LABELED LEFT
 AND RIGHT AS VIEWED FROM INSIDE
 THE COACH

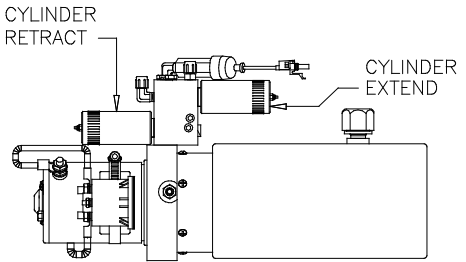
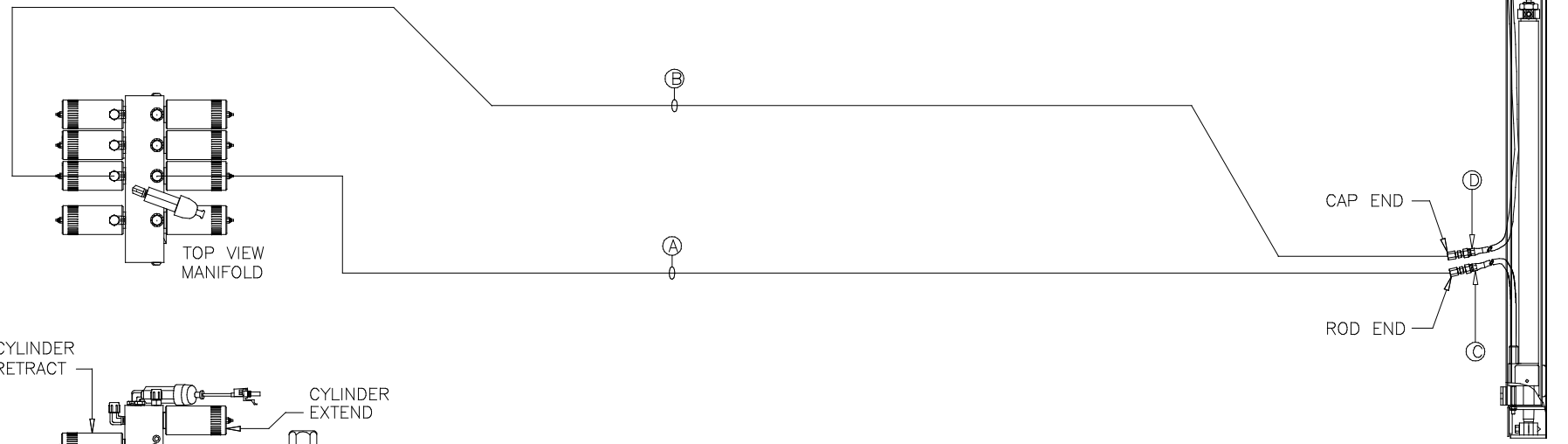


NOTE: INSTALLATION MUST CONFORM TO GOOD SHOP PRACTICES, SAE STANDARDS, RVIA STANDARDS, AND OTHER APPLICABLE STANDARDS.

ORIENTATION
← FRONT

NOTE: HOSES ③ AND ④ ARE INCLUDED WITH THE ROOM EXTENSION MECHANISM

- ① AP4391 HOSE ASSY .25 x 372"
WAS AP24666 HOSE ASSY HWH02HP x 300"
ROD END - ALWAYS PRESSURIZED
- ② AP4164 HOSE ASSY .25 x 384"
WAS AP4064 HOSE ASSY .25 x 300"
CAP END
- ③ AP24628 HOSE ASSY HWH02HP x 24.25"
ROD END - ALWAYS PRESSURIZED
- ④ AP24632 HOSE ASSY HWH02HP x 48"
CAP END

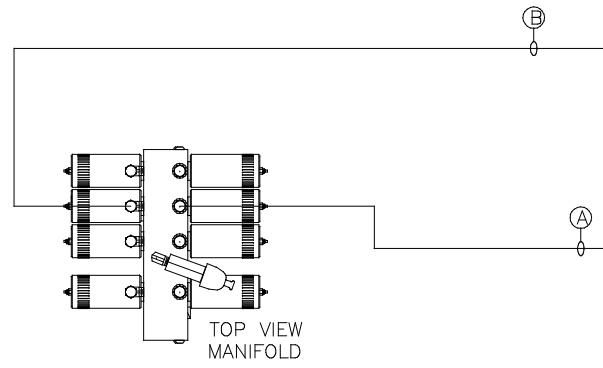
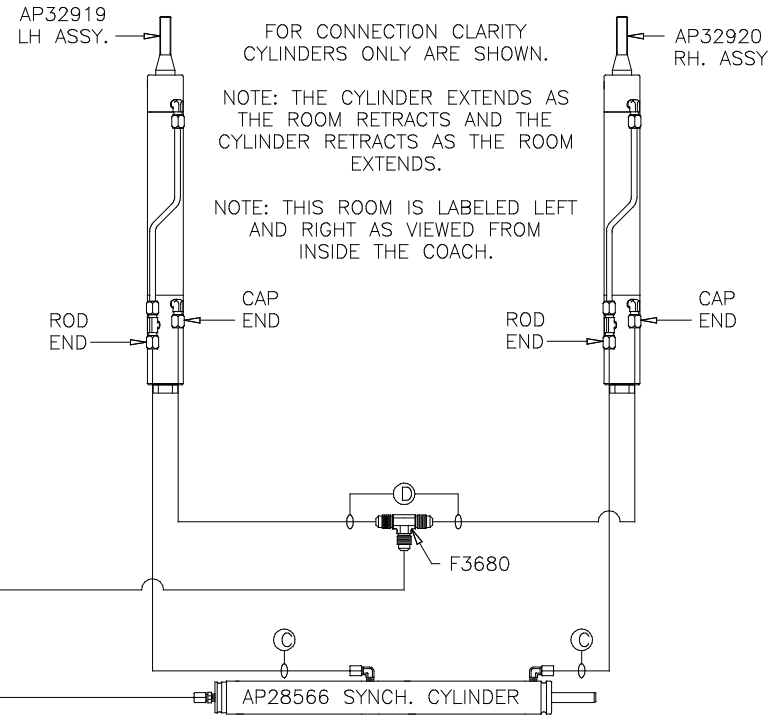


SIDE VIEW PUMP/MANIFOLD-AP38103

NOTE: INSTALLATION MUST CONFORM TO GOOD SHOP PRACTICES, SAE STANDARDS, RVIA STANDARDS, AND OTHER APPLICABLE STANDARDS.

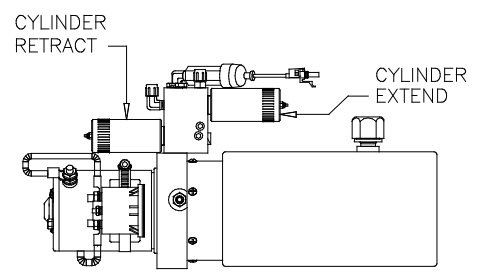
ORIENTATION
 ← FRONT

ROOM #3
 AP32918
 LATERAL ARM



NOTE: HOSES © AND ④ ARE INCLUDED WITH THE ROOM EXTENSION MECHANISM

- Ⓐ AP4064 HOSE ASSY .25 x 300"
 WAS AP24672 HOSE ASSY HWH02HP x 372"
 ROD END - ALWAYS PRESSURIZED
- Ⓑ AP4904 HOSE ASSY .25 x 306"
 WAS AP4391 HOSE ASSY .25 x 372"
 CAP END
- Ⓒ AP24633 HOSE ASSY HWH02HP x 54"
 ROD END - ALWAYS PRESSURIZED - MUST BE HIGH PRESSURE HOSES OF EQUAL LENGTH AND DIAMETER
- Ⓓ AP24634 HOSE ASSY .25 x 60"
 CAP END - MUST MAINTAIN EQUAL LENGTH AND DIAMETER



SIDE VIEW PUMP/MANIFOLD-AP38103 ⚠

NOTE: INSTALLATION MUST CONFORM TO GOOD SHOP PRACTICES, SAE STANDARDS, RVIA STANDARDS, AND OTHER APPLICABLE STANDARDS.