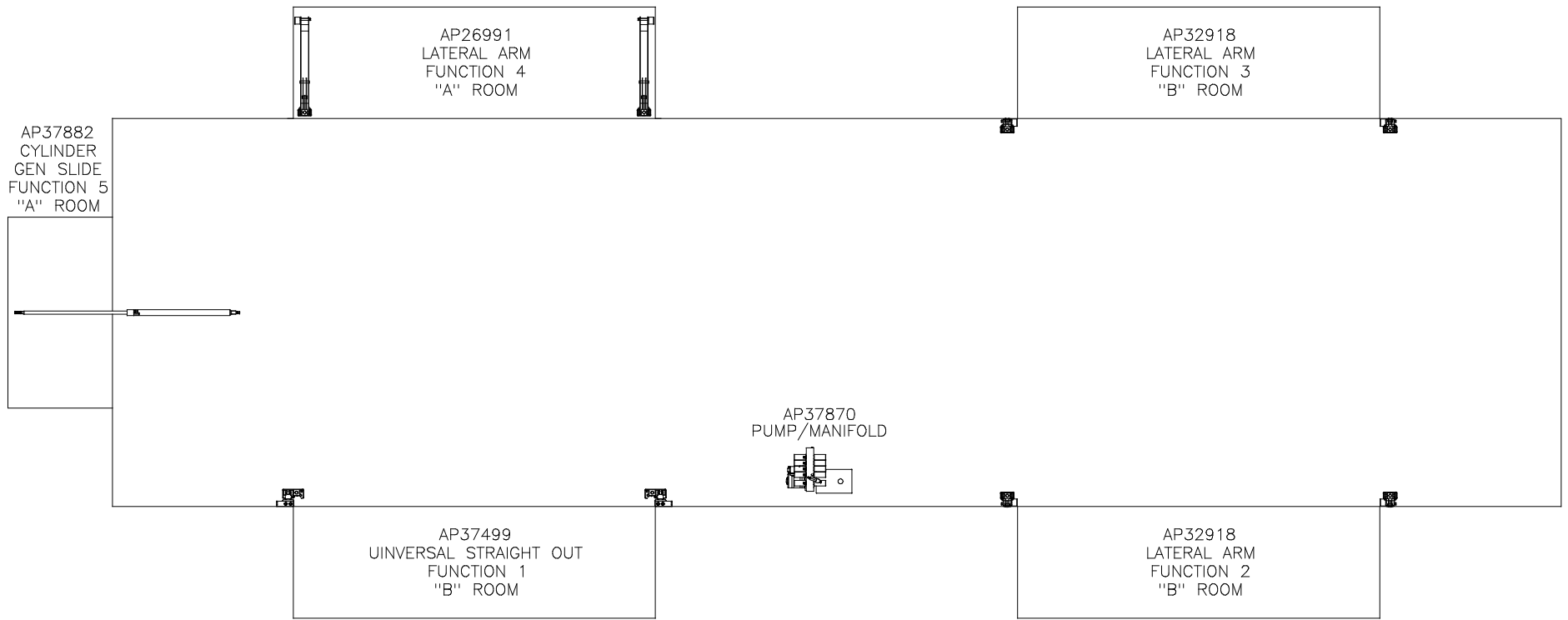


ORIENTATION  
 ← FRONT



NOTE: INSTALLATION MUST CONFORM TO GOOD SHOP PRACTICES, SAE STANDARDS, RVIA STANDARDS, AND OTHER APPLICABLE STANDARDS.

LEVELING SYSTEM: AP37788

NO.	DATE	REVISION
2	30SEP13	UPDATED HOSES, ROOM
1	16SEP13	UPDATED HOSES

HWH I-80 EXIT 267 SOUTH  
 RT 1 MOSCOW, IOWA 52760  
 SCALE 1:6 DATE 12APR06 DRAWN BY .

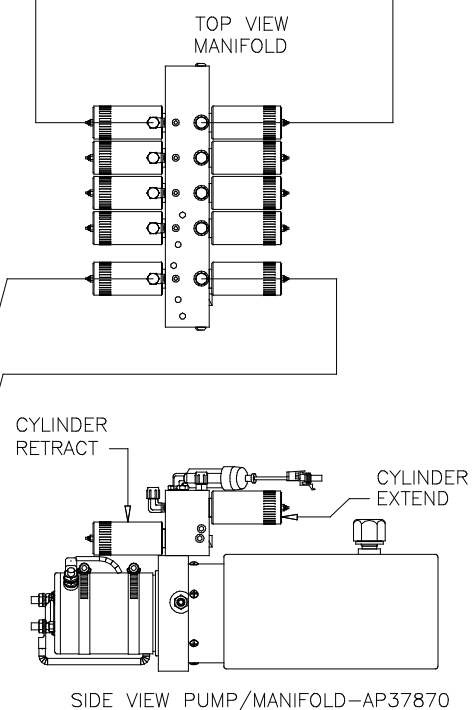
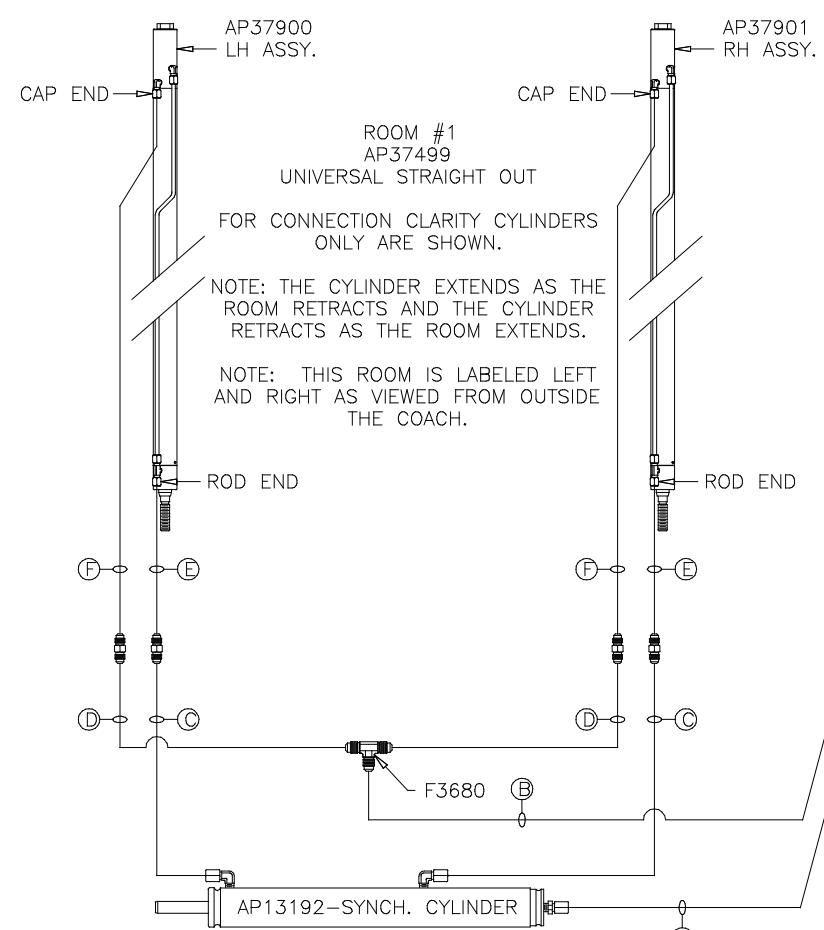
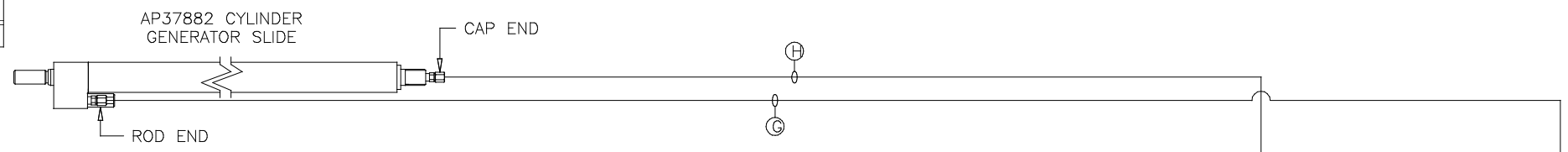
HYD CONN DIAGRAM

THE INFORMATION DISCLOSED ON THIS DRAWING IS CONFIDENTIAL AND MUST NOT BE DISCLOSED OR USED IN ANY MANNER WHICH WILL BE DETRIMENTAL TO THE HWH CORPORATION

FORETRAVEL

DRAWING NUMBER  
 MP69574 A/E

ORIENTATION  
 ← FRONT



- NOTE: HOSES (E) AND (F) ARE INCLUDED WITH THE ROOM EXTENSION MECHANISM
- (A) AP4074 HOSE ASSY .25" x 108"  
 WAS AP24632 HOSE ASSY HWH02HP x 48"  
 ROD END - ALWAYS PRESSURIZED
  - (B) AP7099 HOSE ASSY .25" x 110"  
 WAS AP3314 HOSE ASSY .25 x 48"  
 CAP END
  - (C) AP24667 HOSE ASSY HWH02HP x 312"  
 ROD END - ALWAYS PRESSURIZED - MUST  
 BE HIGH PRESSURE HOSES OF EQUAL  
 LENGTH AND DIAMETER
  - (D) AP5216 HOSE ASSY .25 x 312"  
 CAP END - MUST MAINTAIN EQUAL LENGTH  
 AND DIAMETER
  - (E) AP24632 HOSE ASSY HWH02HP x 48"  
 ROD END - ALWAYS PRESSURIZED - MUST  
 BE HIGH PRESSURE HOSES OF EQUAL  
 LENGTH AND DIAMETER
  - (F) AP24818 HOSE ASSY HWH02HP x 86"  
 CAP END - MUST MAINTAIN EQUAL LENGTH  
 AND DIAMETER
  - (G) AP13851 HOSE ASSY .25 x 318"  
 WAS AP24667 HOSE ASSY HWH02HP x 312"  
 ROD END - ALWAYS PRESSURIZED
  - (H) AP5216 HOSE ASSY .25 x 312"  
 CAP END

ROOM #1  
 AP37499  
 UNIVERSAL STRAIGHT OUT

FOR CONNECTION CLARITY CYLINDERS  
 ONLY ARE SHOWN.

NOTE: THE CYLINDER EXTENDS AS THE  
 ROOM RETRACTS AND THE CYLINDER  
 RETRACTS AS THE ROOM EXTENDS.

NOTE: THIS ROOM IS LABELED LEFT  
 AND RIGHT AS VIEWED FROM OUTSIDE  
 THE COACH.

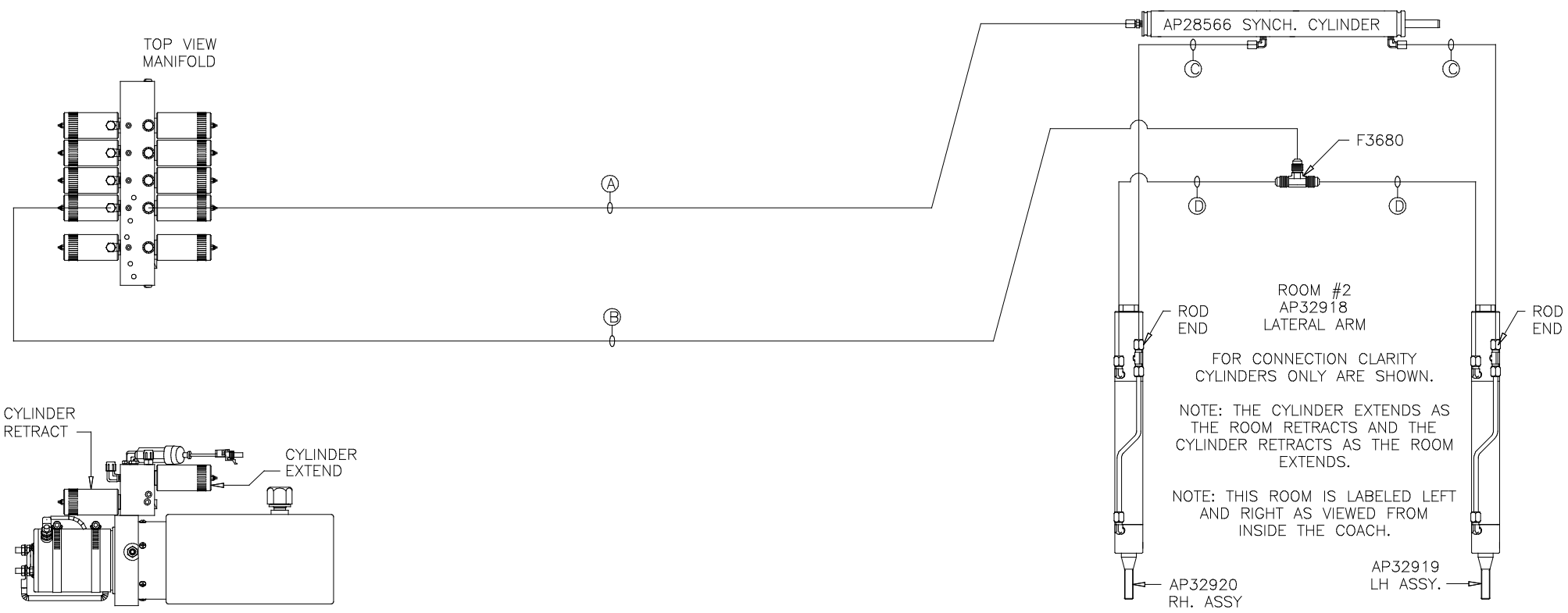
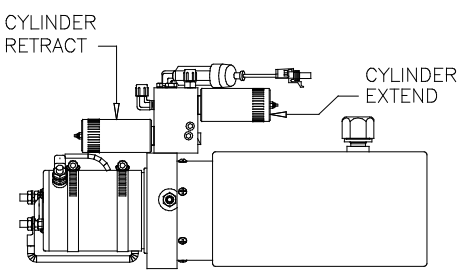
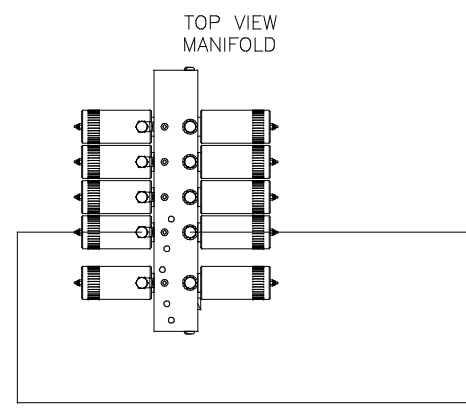
NOTE: INSTALLATION MUST CONFORM TO GOOD SHOP PRACTICES, SAE STANDARDS, RVIA STANDARDS, AND OTHER APPLICABLE STANDARDS.

MP69574 B/E  
 30SEP13

ORIENTATION  
 ← FRONT

NOTE: HOSES ③ AND ④ ARE INCLUDED WITH THE ROOM EXTENSION MECHANISM

- ① AP4904 HOSE ASSY .25" X 306"  
 WAS AP24666 HOSE ASSY HWH02HP x 300"  
 ROD END - ALWAYS PRESSURIZED
- ② AP4064 HOSE ASSY .25 x 300"  
 CAP END
- ③ AP24633 HOSE ASSY HWH02HP x 54"  
 ROD END - ALWAYS PRESSURIZED - MUST  
 BE HIGH PRESSURE HOSES OF EQUAL  
 LENGTH AND DIAMETER
- ④ AP24634 HOSE ASSY .25 x 60"  
 CAP END - MUST MAINTAIN EQUAL LENGTH  
 AND DIAMETER

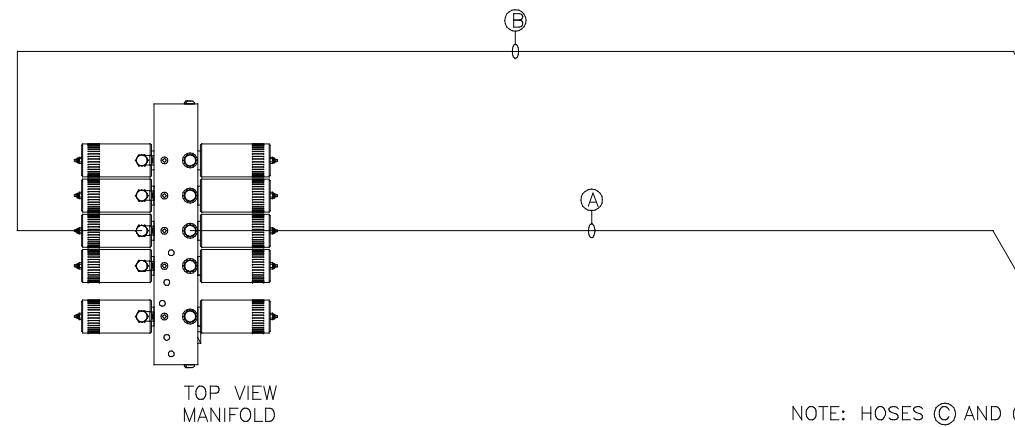
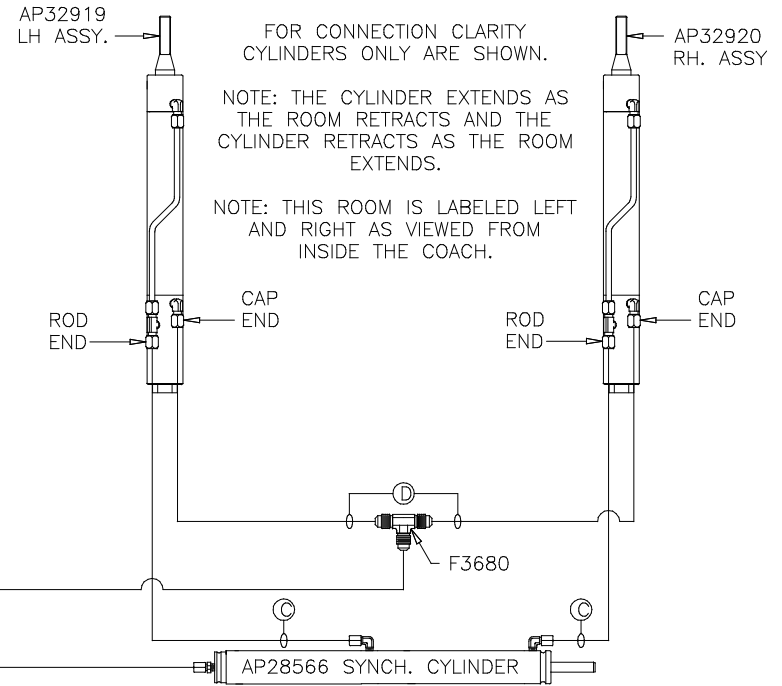


NOTE: INSTALLATION MUST CONFORM TO GOOD SHOP PRACTICES, SAE STANDARDS, RVIA STANDARDS, AND OTHER APPLICABLE STANDARDS.

MP69574 C/E  
 30SEP13

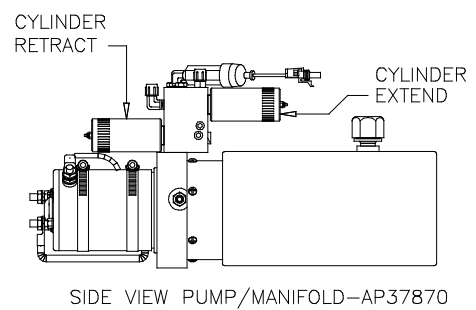
ORIENTATION  
 ← FRONT

ROOM #3  
 AP32918  
 LATERAL ARM



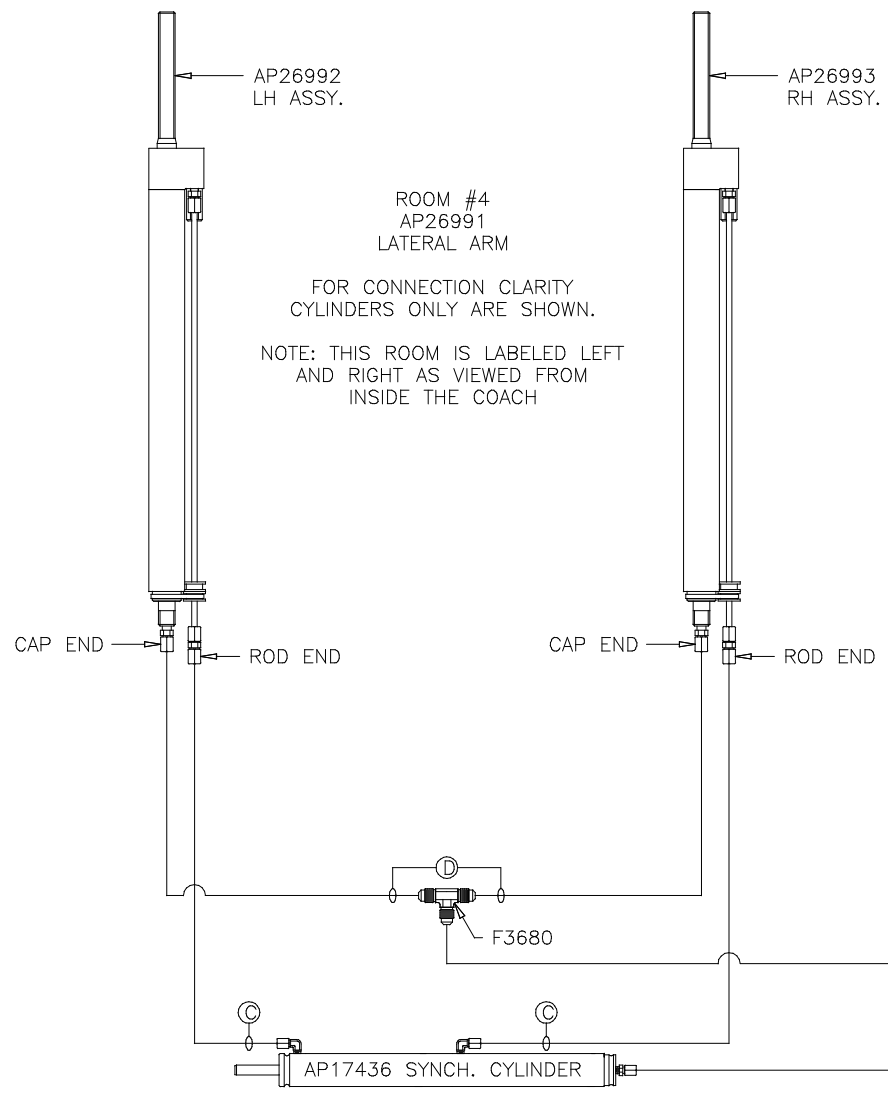
NOTE: HOSES C AND D ARE INCLUDED WITH THE ROOM EXTENSION MECHANISM

- Ⓐ AP4391 HOSE ASSY .25 x 372"  
 WAS AP24672 HOSE ASSY HWH02HP x 372"  
 ROD END - ALWAYS PRESSURIZED
- Ⓑ AP4164 HOSE ASSY .25 x 384"  
 WAS AP4391 HOSE ASSY .25 x 372"  
 CAP END
- Ⓒ AP24633 HOSE ASSY HWH02HP x 54"  
 ROD END - ALWAYS PRESSURIZED - MUST BE HIGH PRESSURE HOSES OF EQUAL LENGTH AND DIAMETER
- Ⓓ AP24634 HOSE ASSY .25 x 60"  
 CAP END - MUST MAINTAIN EQUAL LENGTH AND DIAMETER



NOTE: INSTALLATION MUST CONFORM TO GOOD SHOP PRACTICES, SAE STANDARDS, RVIA STANDARDS, AND OTHER APPLICABLE STANDARDS.

ORIENTATION  
 ← FRONT

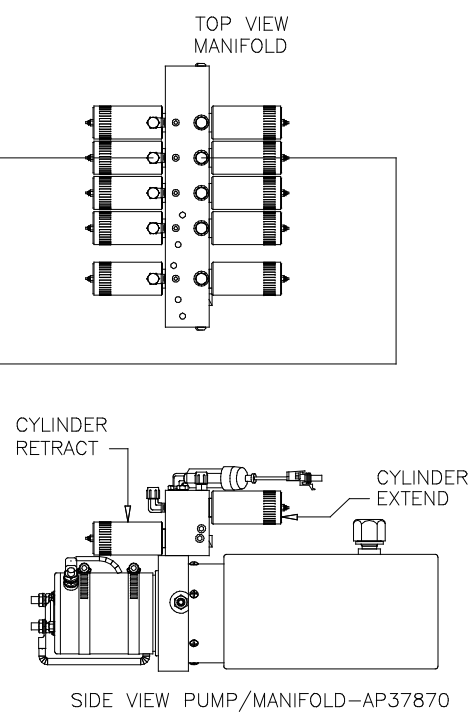


ROOM #4  
 AP26991  
 LATERAL ARM

FOR CONNECTION CLARITY  
 CYLINDERS ONLY ARE SHOWN.

NOTE: THIS ROOM IS LABELED LEFT  
 AND RIGHT AS VIEWED FROM  
 INSIDE THE COACH

- Ⓐ AP4074 HOSE ASSY .25" x 108"  
 WAS AP24632 HOSE ASSY HWH02HP x 48"  
 ROD END - ALWAYS PRESSURIZED
- Ⓑ AP7099 HOSE ASSY .25" x 110"  
 WAS AP3314 HOSE ASSY .25 x 48"  
 CAP END
- Ⓒ AP24667 HOSE ASSY HWH02HP x 312"  
 ROD END - ALWAYS PRESSURIZED - MUST  
 BE HIGH PRESSURE HOSES OF EQUAL  
 LENGTH AND DIAMETER
- Ⓓ AP5216 HOSE ASSY .25 x 312"  
 CAP END - MUST MAINTAIN EQUAL LENGTH  
 AND DIAMETER



NOTE: INSTALLATION MUST CONFORM TO GOOD SHOP PRACTICES, SAE STANDARDS, RVIA STANDARDS, AND OTHER APPLICABLE STANDARDS.