

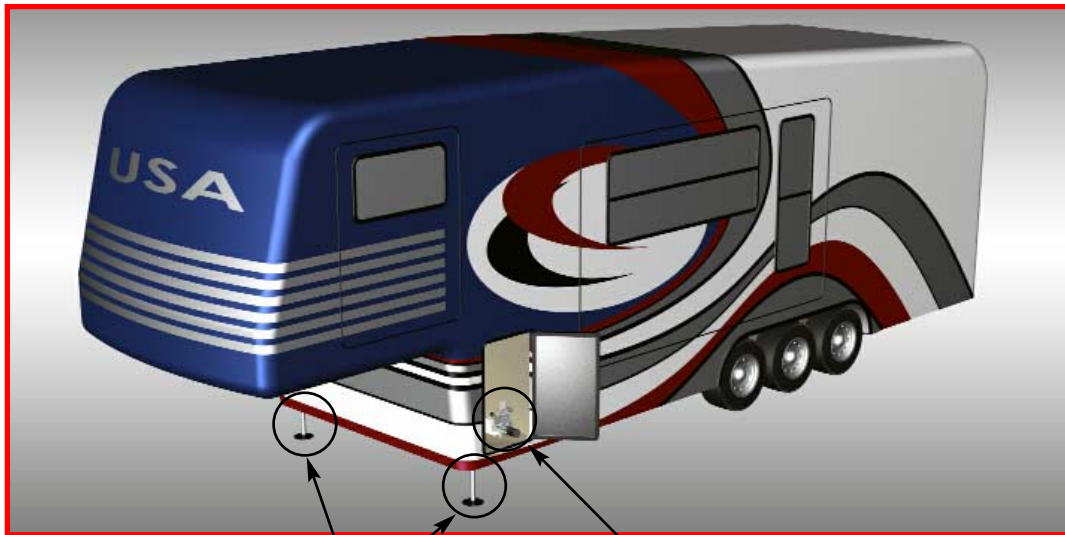


Power-Up / Power-Down Hydraulic Landing Gear

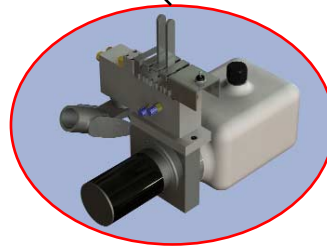
Designed to replace mechanical landing gear

AP43038 Landing Gear Package

Featuring Hand Pump / Electrical Pump with Hydraulic Switches
&
Power-Up / Power-Down Landing Gear



Power-up / Power-Down Hydraulic Landing Gear with a lifting capacity of 7,000 lb. per jack



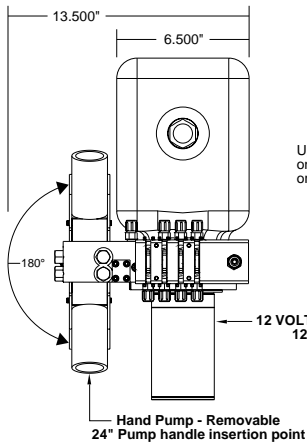
Hand/Electric Pump with Hydraulic Switches

STRONG, RELIABLE, HYDRAULIC POWER

For more information, visit
www.HWH.com (click "Towable Systems")
or contact HWH® directly at
1-800-321-3494 (or) 1-563-724-3396.

Specifications & Features

The HWH[®]: Power Unit with Hydraulic Switch Control and Manual Back-up



Up to four hydraulic switch controls will operate up to four one way jacks, four two way jacks or four room extensions or a combination there of.

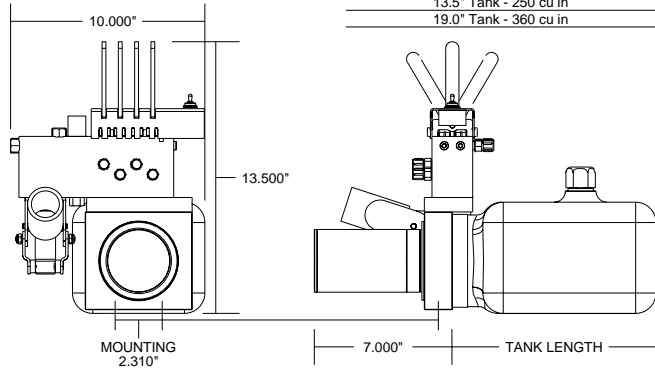
12 VOLT DC Motor and Pump
125 amp - 2500 psi

Specifications...

| | |
|----------------------|----|
| WEIGHT (lbs.) | |
| Each Assembly | 25 |

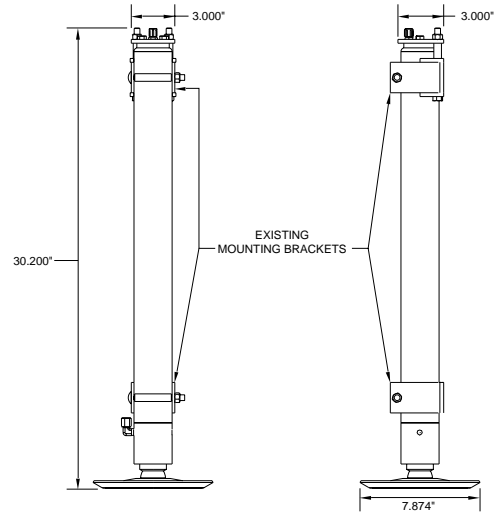
TANK LENGTH - OIL DELIVERY (Cubic inches)

| | |
|------------|-----------|
| 10.0" Tank | 165 cu in |
| 13.5" Tank | 250 cu in |
| 19.0" Tank | 360 cu in |



Specifications & Features

The HWH[®] "Power-Up / Power-Down" 7,000 lb. Landing Gear



Specifications...

| | |
|-----------------------|----|
| WEIGHTS (lbs.) | |
| Each Assembly | 36 |

DIMENSIONS (in.)

| | |
|-----------------------|--------|
| Jack Width | 2.500 |
| Retracted Jack Height | 30.200 |
| Jack Stroke | 21.000 |

| | |
|-----------------------------|-------|
| LOAD PER JACK (lbs.) | 7,000 |
|-----------------------------|-------|

PRIMARY APPLICATIONS

| | |
|----------|--|
| Towables | |
|----------|--|

ML43043B
ML43044B
ML43045B
ML43046B
ML43047B

ML42335B.DWG - 17JUN08

ML42935B.DWG - 25SEP08