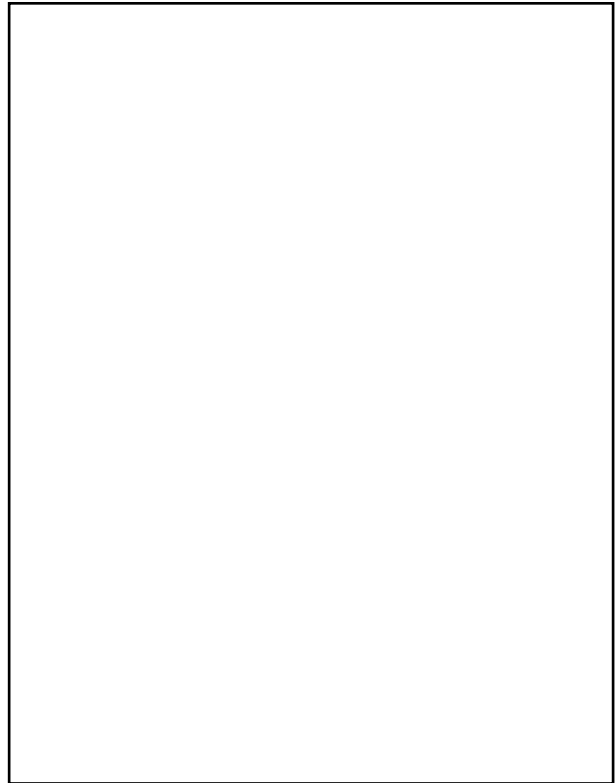


HWH[®] Travel Clamps Automatic Room Retention System

(Patented)

HWH[®] Travel Clamps Features and Benefits

- ! Proven patented design and customer acceptance.
- ! Compact. Easily integrated into any room.
- ! Adaptable to any size room.
- ! Ideal for use with under-floor and in-floor slide-out mechanisms.
- ! Keeps retracted room secure at top corners.
- ! Clean, smooth exterior finish when Travel Clamps are retracted.
- ! Eliminates manual room retention devices.
- ! Weather resistant housing.
- ! Optional "one-button operation" of Travel Clamps and room extension system.
- ! HWH[®] rugged construction. Long life actuator and gearing.



The Travel Clamps are located inside the room,
at both top corners.



Room in Travel Clamps extended.

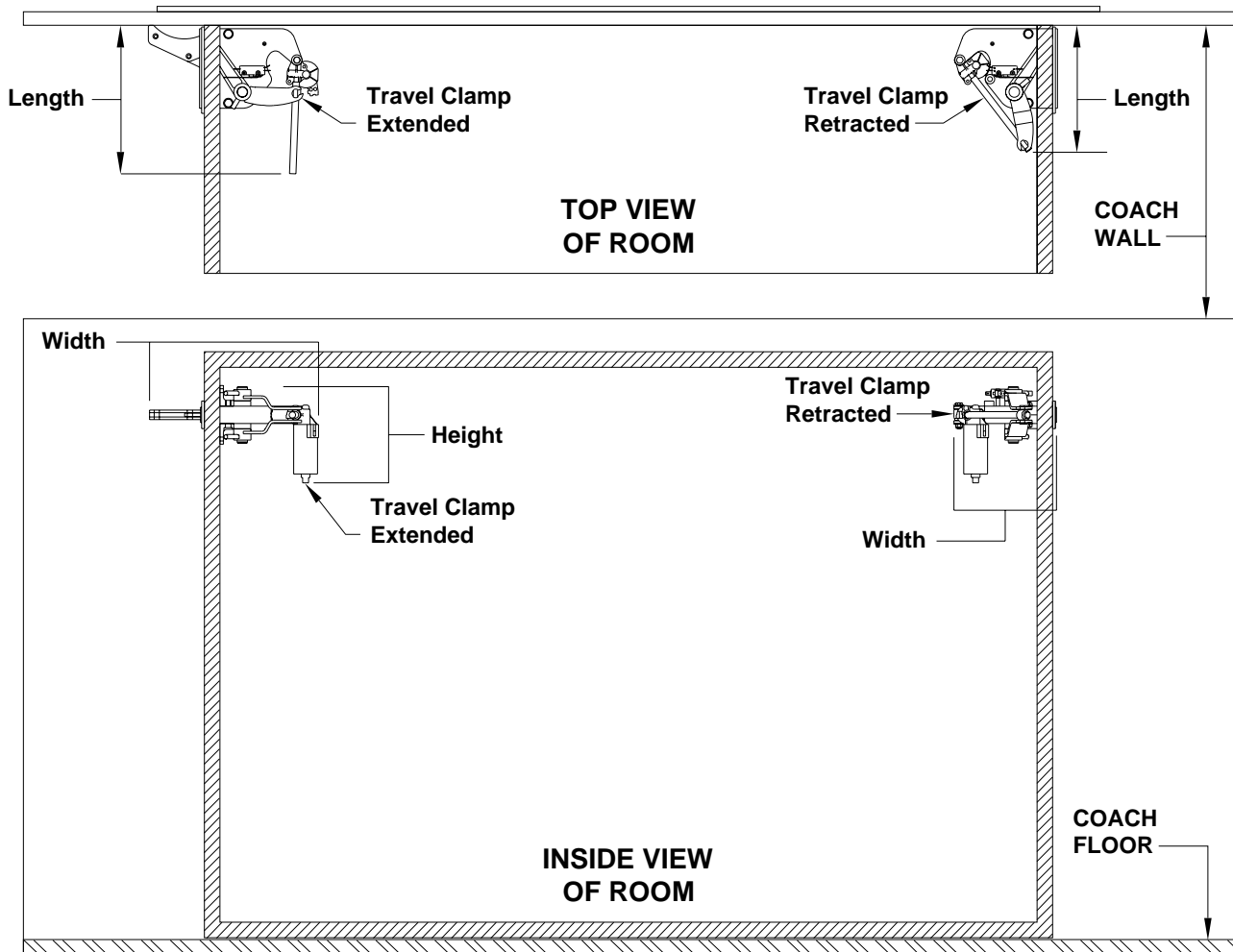


Web Video
www.hwh.com/ml29810.wmv

(On I-80, Exit 267 South) | 2096 Moscow Road | Moscow, Iowa 52760 | Phone: (800)321-3494 or (563)724-3396 | Fax: (563)724-3 408
Web: www.HWH.com

Specifications & Features

HWH® Travel Clamps (Patented)



Specifications...

WEIGHTS (lbs.)

Each "Travel Clamp" Assembly (2) Approx. - 6

Gross Weight Approx. - 12

DIMENSIONS (in.)

Clamp Height (Extended & Retracted) 7.00

Clamp Width (Extended) 11.50

Clamp Length (Extended) 10.56

Clamp Width (Retracted) 7.81

Clamp Length (Retracted) 9.06

LOAD PER CLAMP (lbs.) 400

PRIMARY APPLICATIONS

Wall Mounted

Above Floor