

# Cross Tie Kit: Straight-Acting Jacks

**Application:** For mounting Straight-Acting Jacks.

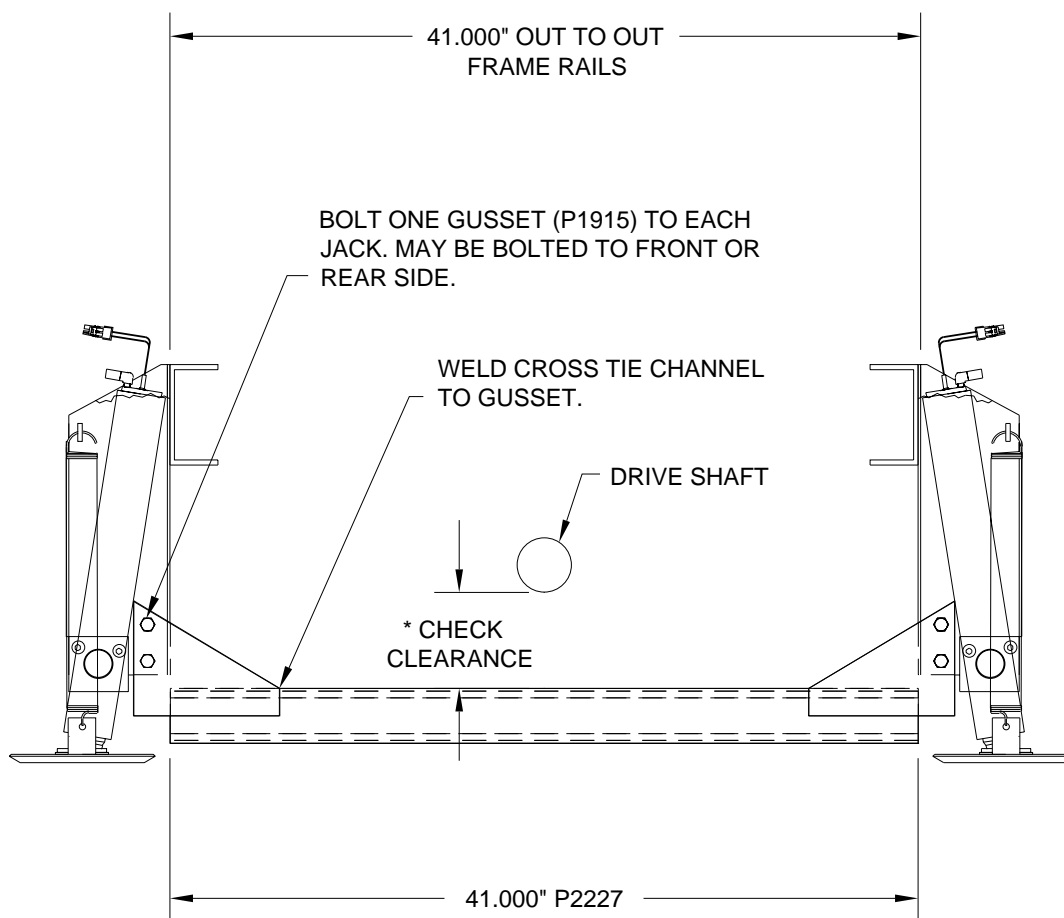
**Mfr. #:** AP2226 Cross Tie Kit 41"

**Includes:** 1 - P2227 Channel 41"

2 - P1915 Gusset

1 - AP2042 Hardware Kit

**M.S.R.P.:** See Item Price Listing



\* CLEARANCE BETWEEN DRIVE SHAFT AND REAR CROSS TIE ON PUSHER COACHES MUST BE CHECKED WHEN AXLE IS MAXIMUM DISTANCE FROM FRAME.

**CAUTION:** Follow CAUTIONS in Operator's and Installation Manuals concerning working under vehicles.

MI25.4331  
15DEC00