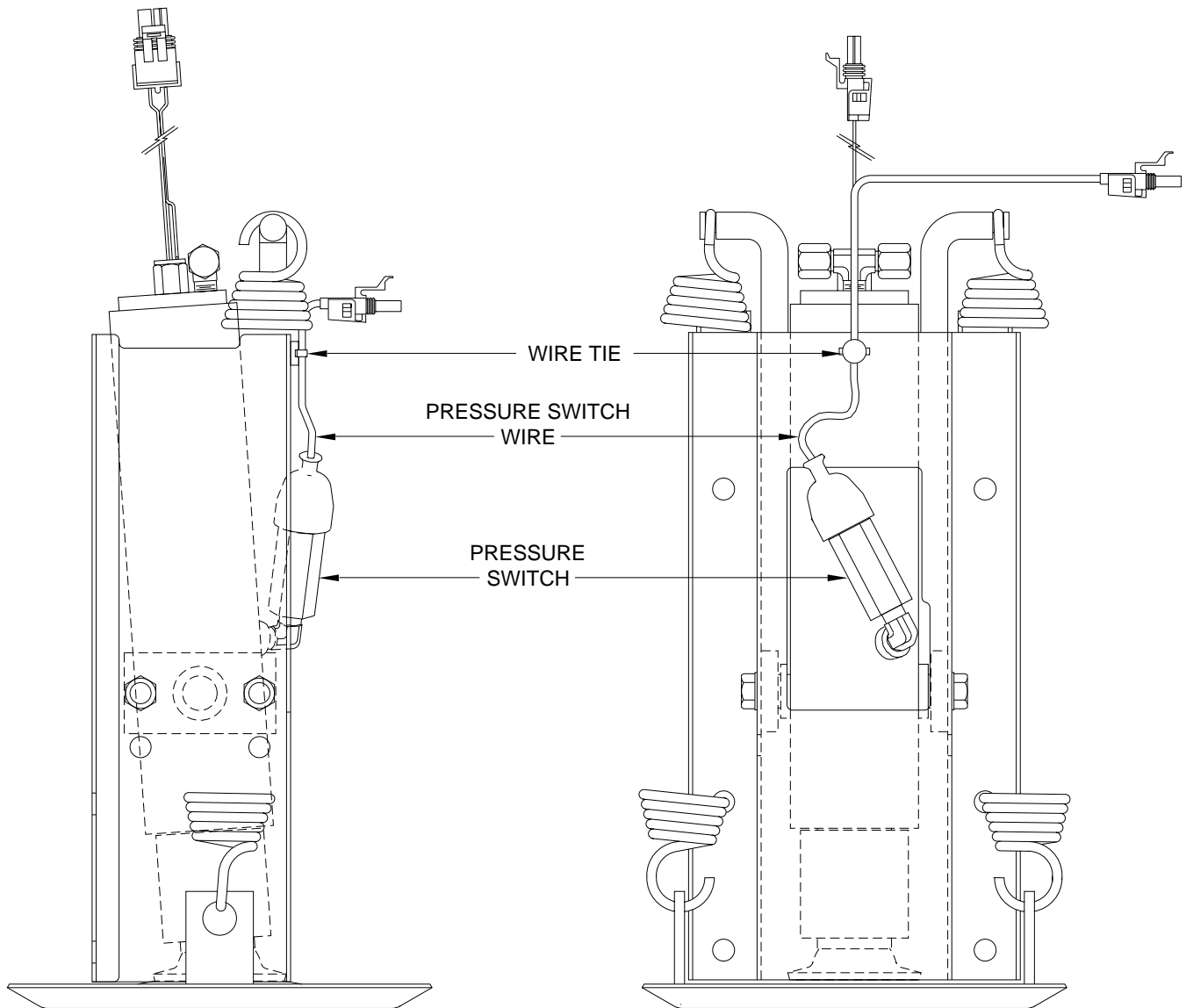


## PRESSURE SWITCH INSTALLATION

### 4000# JACK WITH PRESSURE SWITCH WINDOW IN PIVOT BRACKET

**NOTE: INSTALL FITTING ON JACK CYLINDER BEFORE PLACING CYLINDER INTO JACK WRAPPER. INSTALL PRESSURE SWITCH AFTER CYLINDER IS SECURED IN THE JACK WRAPPER.**



MOUNT PRESSURE SWITCH AS SHOWN. ATTACH PRESSURE SWITCH WIRE TO THE JACK PIVOT BRACKET AND SECURE WITH WIRE TIES AND ANCHORS. USE 1/4" DIAMETER HOLES IN PIVOT BRACKET TO MOUNT ANCHORS. MAKE SURE JACK CAN PIVOT FREELY WITHOUT DAMAGING THE PRESSURE SWITCH OR PINCHING THE PRESSURE SWITCH WIRE.

**CAUTION:** Follow CAUTIONS in Operator's and Installation Manuals concerning working under vehicles.

**MI15.2102  
21MAY08**