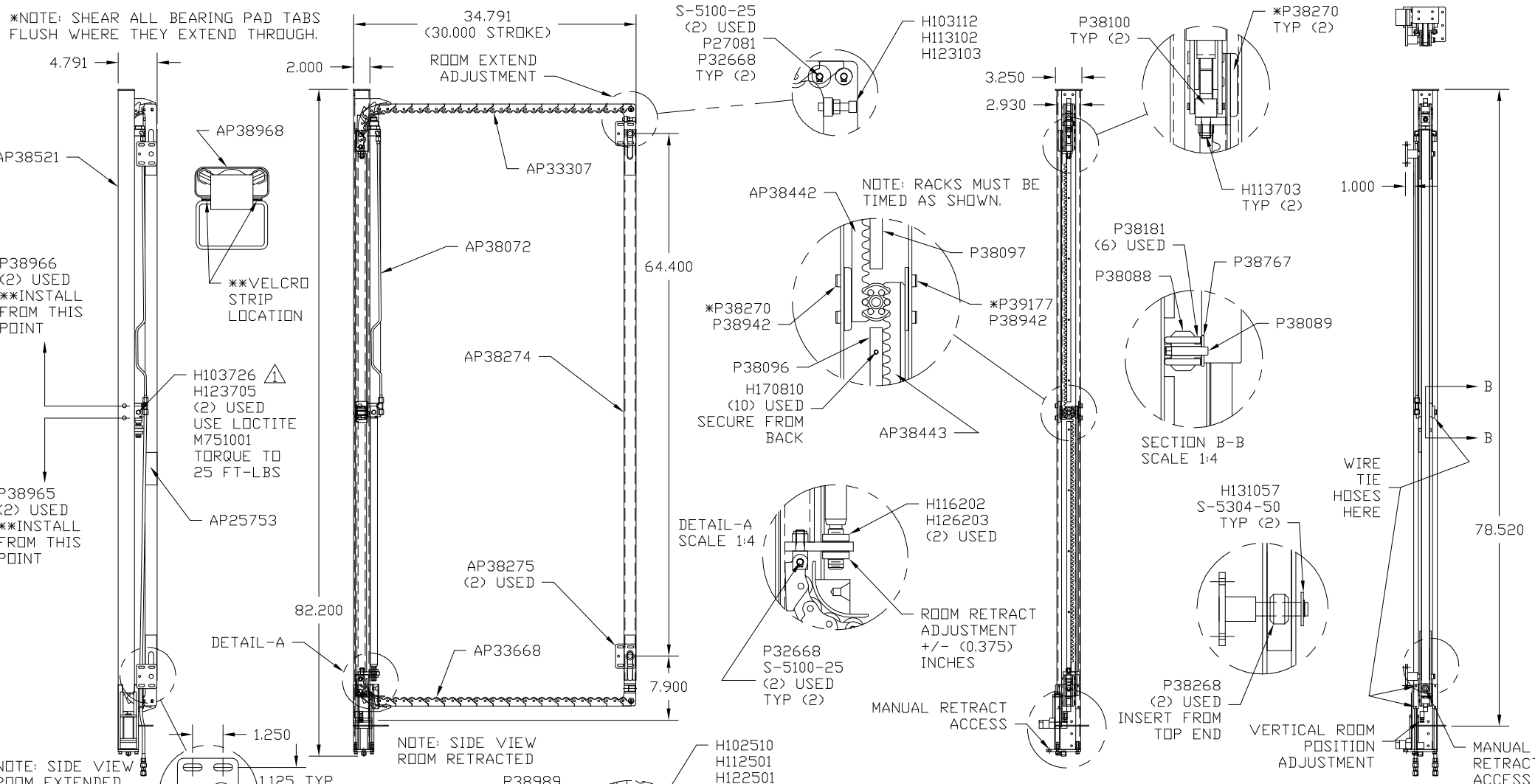


\*NOTE: SHEAR ALL BEARING PAD TABS FLUSH WHERE THEY EXTEND THROUGH.



NOTE: AP24818 (HOSE ASSY HWH02HP X 86) CAP SIDE  
 NOTE: AP24632 (HOSE ASSY HWH02HP X 48) ROD SIDE  
 NOTE: SECURE HOSE WITH P2405 (5) AS SHOWN  
 NOTE: CAP HOSES WITH (2) F0936 AND (2) F2539  
 NOTE: GREASE PINS P38181 AND P38089

NO.	DATE	REVISION
4	24SEP07	UPD AP38275
3	07AUG07	DEL H123703 & M710801
2	26JAN07	UPDATED P38100
1	16NOV06	WAS P38323/H123703

THE INFORMATION DISCLOSED ON THIS DRAWING IS CONFIDENTIAL AND MUST NOT BE DISCLOSED OR USED IN ANY MANNER WHICH WILL BE DETRIMENTAL TO THE HWH CORPORATION

HWH I-80 EXIT 267 SOUTH  
 RT 1 MOSCOW, IOWA 52760  
 SCALE 1:12 DATE 21SEP06 DRAWN BY .

RM EXT/2CYL/30/LH/ULO

DRAWING NUMBER  
 AP38945